

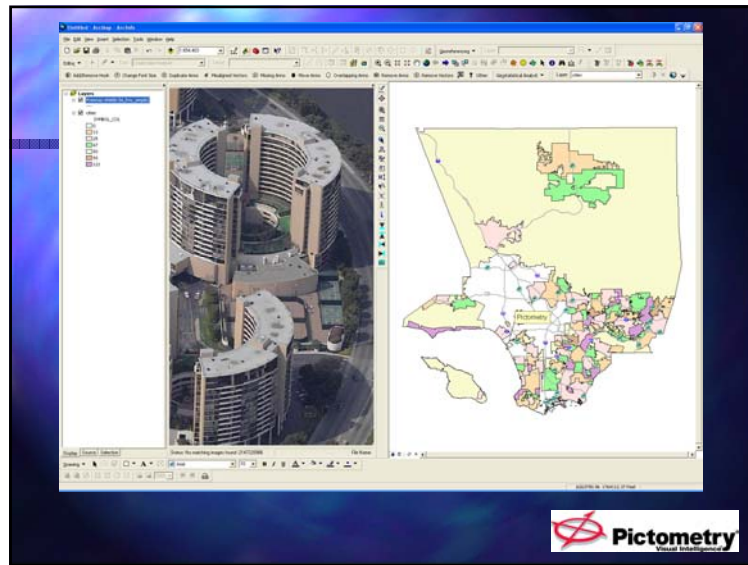
## Pictometry

- Recap of last presentation
- DEM Integration is **not** yet complete
- One Interim Delivery has been Provided
  - We are starting simple QA/QC
- Dewberry will do final QA/QC on final delivery



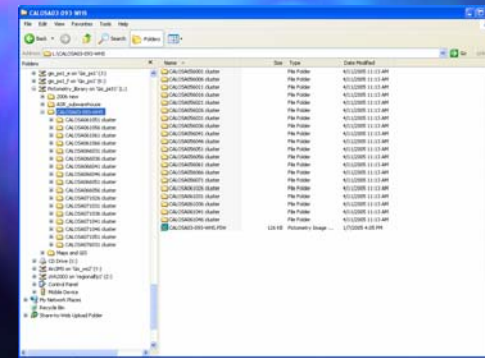
## ArcGIS Extension

- Integrates better than before
- Ability to see Pictometry imagery within the ESRI application
- Benefit is that you do not have to leave the ArcGIS environment in order to view our images



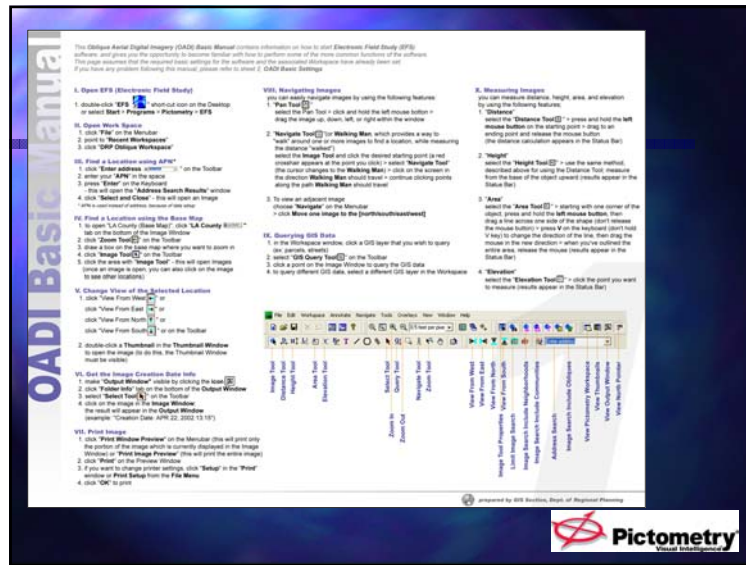
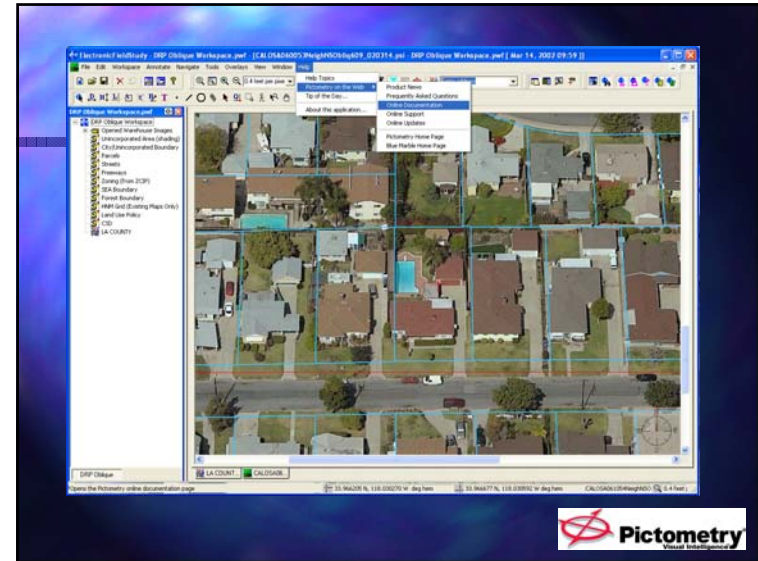
## Data Warehouse (Library)

- Standard makeup of the Pictometry delivery



## User Guides & Manuals

- There are plenty of materials that go along with the Pictometry delivery...
- While in EFS (Pictometry software)
- Click on the help tab.
- Drop down to Pictometry on the Web for updates etc. Follow the prompts.
- Cheat sheet available from LAR-IAC



## Training & User Group Meetings

- Training to start after delivery
  - Some training with Pictometry staff
  - Some training with LA County staff
- User Group Meetings (Quarterly) to start in November (2006)



## Install Help & Technical Support

- Provided by Pictometry
  - We'll give you the number
  - (585) 486-0093 (Customer Support)
- Provided by LA County
  - You already have our number
- User Community Assistance



## How to Get Up and Running with the Oblique Imagery

- Install Software
- Link to License and Image Warehouse
- Setup a workspace with GIS layers
- Start Using



## New Features

- Web Hosting Installation (next two months)
- No seat license restrictions
- Active X control to create ESRI Arc extension
- 911 Interface
- Change Findr



## Questions ?

