

## Ways to Deploy the Oblique Imagery

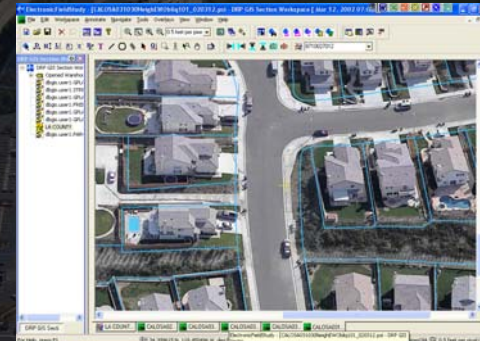
- EFS – Full application and trimmed-down version
- ActiveX Control (and NIW) – for ArcIMS applications
- ArcGIS Extension – for our GIS Section staff
- Change Analysis – to easily see differences from 2003 to 2006

**Important Note:** All are included with the LAR-IAC.

Department of Regional Planning

## EFS

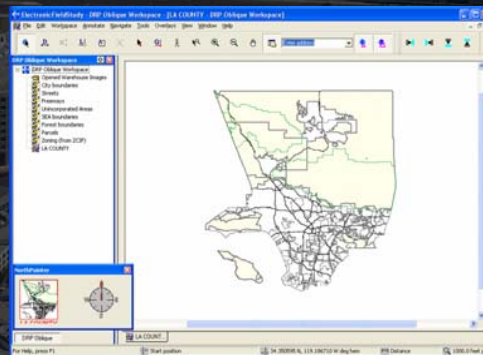
- Main application for “Power Users”
- Half-day training provided to these end users
- One “Read-Only” workspace pre-configured with base GIS layers



Department of Regional Planning

## EFS – Trimmed-Down Version

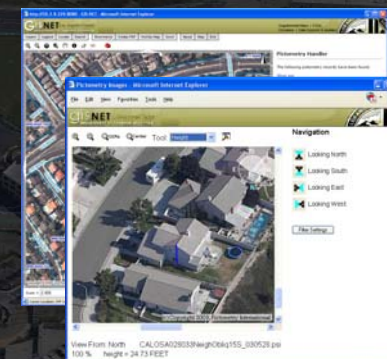
- For staff at “Front Counter”
- Basic functionality
- Easier to navigate
- Simplified toolbars and larger icons



Department of Regional Planning

## ActiveX Control

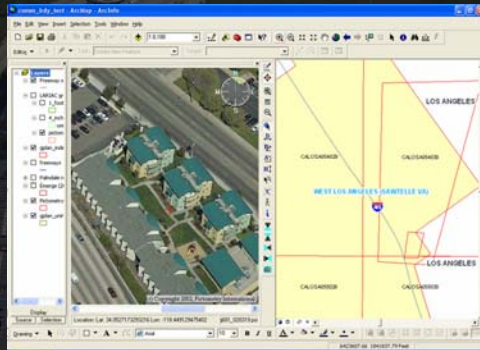
- An interface in our ArcIMS application directly links to the oblique imagery
- Branding is incorporated on the interface
- Requires NIW
- Requires some basic configuration



Department of Regional Planning

## ArcGIS Extension

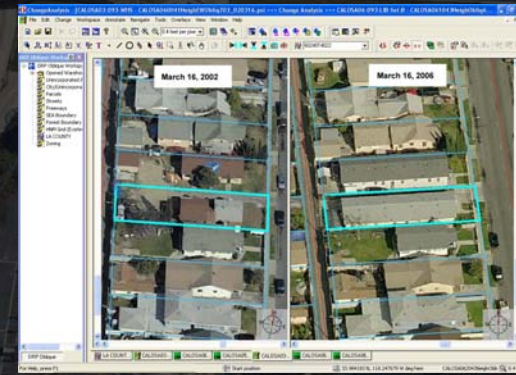
- Can use the product directly in ArcMap
- Main benefit is for ArcGIS users



Department of Regional Planning

## Change Analysis

- For comparisons of 2002 and 2006 imagery



Department of Regional Planning

## QA/QC

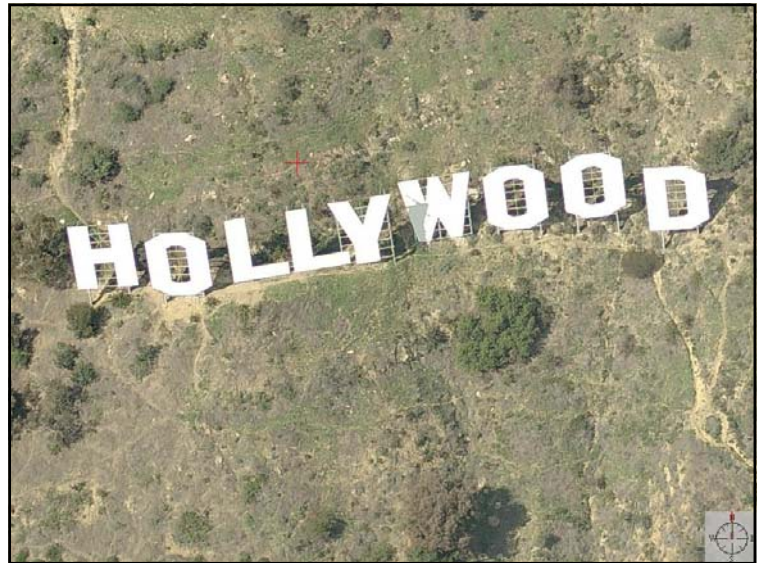
- Check Image Trapezoid Coverage Area  
[Comm Shot Coverage Map](#)  
[Neighborhood Shot Coverage Map](#)
- Check coverage of four way neighborhoods  
[Simple Analysis of Four-Way Coverage](#)

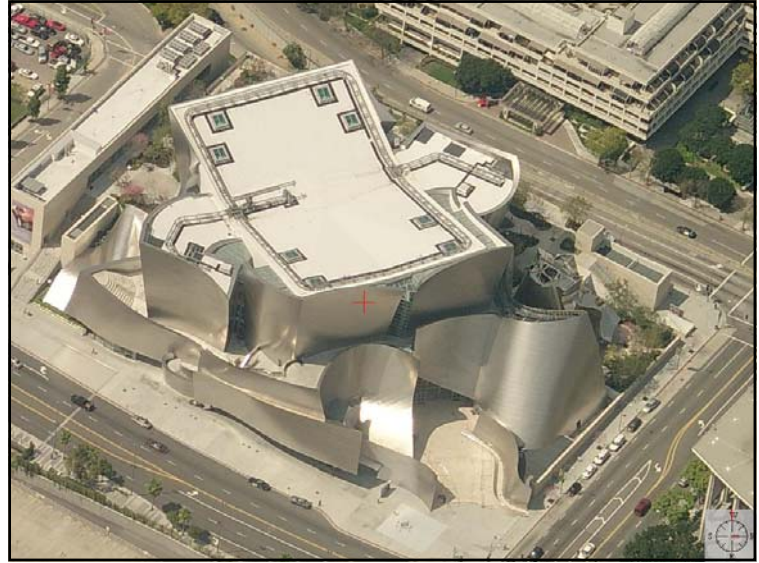
Department of Regional Planning

## Oblique Tour of Los Angeles

Do You Know These Places?

Department of Regional Planning








## Summary


- User group to be setup
- Help can come from Pictometry and from other users
- Need to integrate with as many applications as you can
- It is beneficial at all levels of government business

 Department of Regional Planning

## Questions?

November 2006



 Department of Regional Planning