

Pictometry

April 19, 2007



Department of Regional Planning

Discussion Items

- Recap of Products Included with LAR-IAC
- Training Related
- ArcIMS Integration Procedures
- Sub-license Procedures
- User Group Setup
- Getting 2002-03 Oblique Warehouse



Recap of Products Included

- EFS – Full desktop application
- ArcGIS Extension – for use in ESRI's ArcMap program
- Change Analysis – to easily see differences from 2003 to 2006
- Configuration Editor – to save all configuration settings for easier EFS deployment (and common look and feel)
- Sector Planner – for making subwarehouses
 - Made available on LAR-IAC project web site
- ActiveX Control (and NIW) – for ArcIMS applications
 - Fill out a form and contact Pictometry

Important Note: All are included with the LAR-IAC. Oblique imagery library also included, of course.



Training Related

- We've held four (4) training days (11 sessions) so far throughout the County
- Almost every participant has sent at least one person to the training
 - Over 80 people and counting
 - Map of training locations – [click here](#)
- More training will be held (especially for County departments)...as soon as arrangements are made



ArcIMS Integration Procedures

- Not delivered with the software however, it's available by completing and sending information form to Pictometry (attn: Mike Horan)
 - Fill ArcIMS Integration Request (LAR-IAC IMS Request.pdf)
- They will send you what you need and help you configure



Sub-license Procedures - Pictometry

- A Software License Agreement is being prepared to cover the use of the EFS software
- Contractors working on Participants' projects get the License Agreement signed by the contractor and sent to Pictometry in Rochester for processing
- Pictometry Customer Technical Services will contact the contractor to get the information necessary to generate a license key file and will create that file
 - The license key will be node locked (only able to run on a particular computer)
 - The license key file will last for one year, after that it can be approved and renewed if appropriate.



...continued

- The license key file and the EFS software can then be sent to the contractor (via e-mail, CD or FTP) as appropriate
- There will be no charge for the software if its use is on Participants' projects. This software is not for use on non-county (non-Participants') projects.
- There will be an installation/training video available on the FTP site to assist the contractor to configure and use the EFS software.
- Participants (or LA County) will provide the images.
- If Pictometry provides the images to the contractor, there will be a \$500 copy charge plus the cost of the media if not provided by the contractor.



LAR-IAC User Group

- Informal group of Los Angeles Region Imagery Acquisition Consortium (LAR-IAC) participants that promotes knowledge sharing regarding the digital imagery products acquired through the project.
- This group has 45 members from all over Los Angeles County and is now being formed to discuss data usage. Quarterly meetings will be held throughout the County consisting of technical presentations, software demos and hands-on problem solving discussions (troubleshooting session or “clinic”).
- Goals include...
 - Developing a forum for open discussion of GIS and data usage issues related to the LAR-IAC product data
 - Encouraging professional communication between LAR-IAC participants
 - Sponsoring informative demonstrations and presentations about various technologies to get the most out of the LAR-IAC data
 - Discussing and resolving issues related to provision of the LAR-IAC data.



User Group Meeting Setup

Sample Meeting Format

- 20 minutes - Introduction (LAR-IAC Project Managers)
- 40 minutes - Technical Presentation (or two 20 minute presentations)
- Break – 10 minutes
- 30 minutes - Software Demo
- 30 minutes – Open Forum
- Ongoing during meeting – “clinic”, several computers (Drs. Office type event; several computers in the back of the room)



First Meeting

- Hopefully in about 3 weeks
- Tentative date is 5/10/07 (Thursday)
- Still need a room (because format is different so we can't really use this room)



Getting 2002-03 Oblique Warehouse

- Still need to figure out procedure for this
- I will have a sign up for this today
- You'll have to let us know if you want sectors that intersect with your city or the same sectors that you received with the LAR-IAC.



Questions?

February 22, 2007



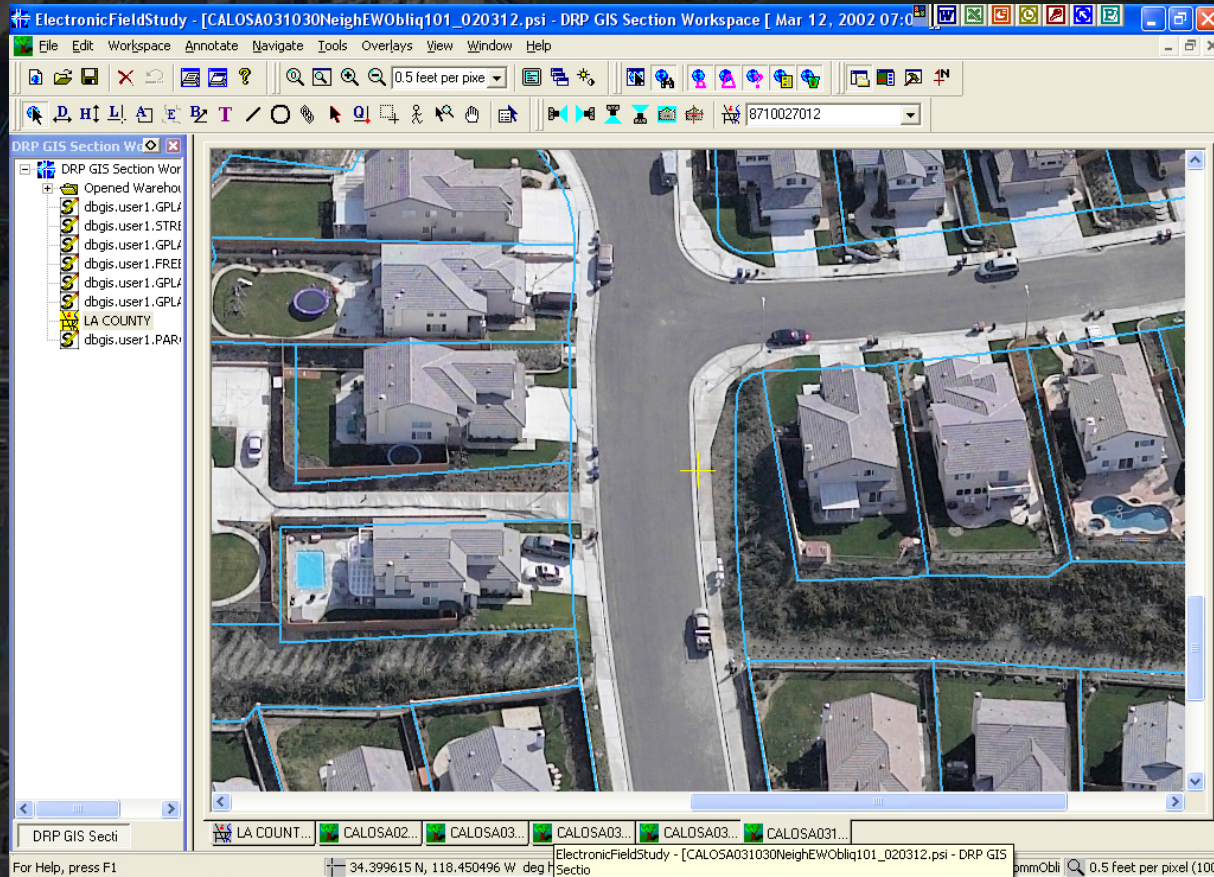
Department of Regional Planning

Product Slides



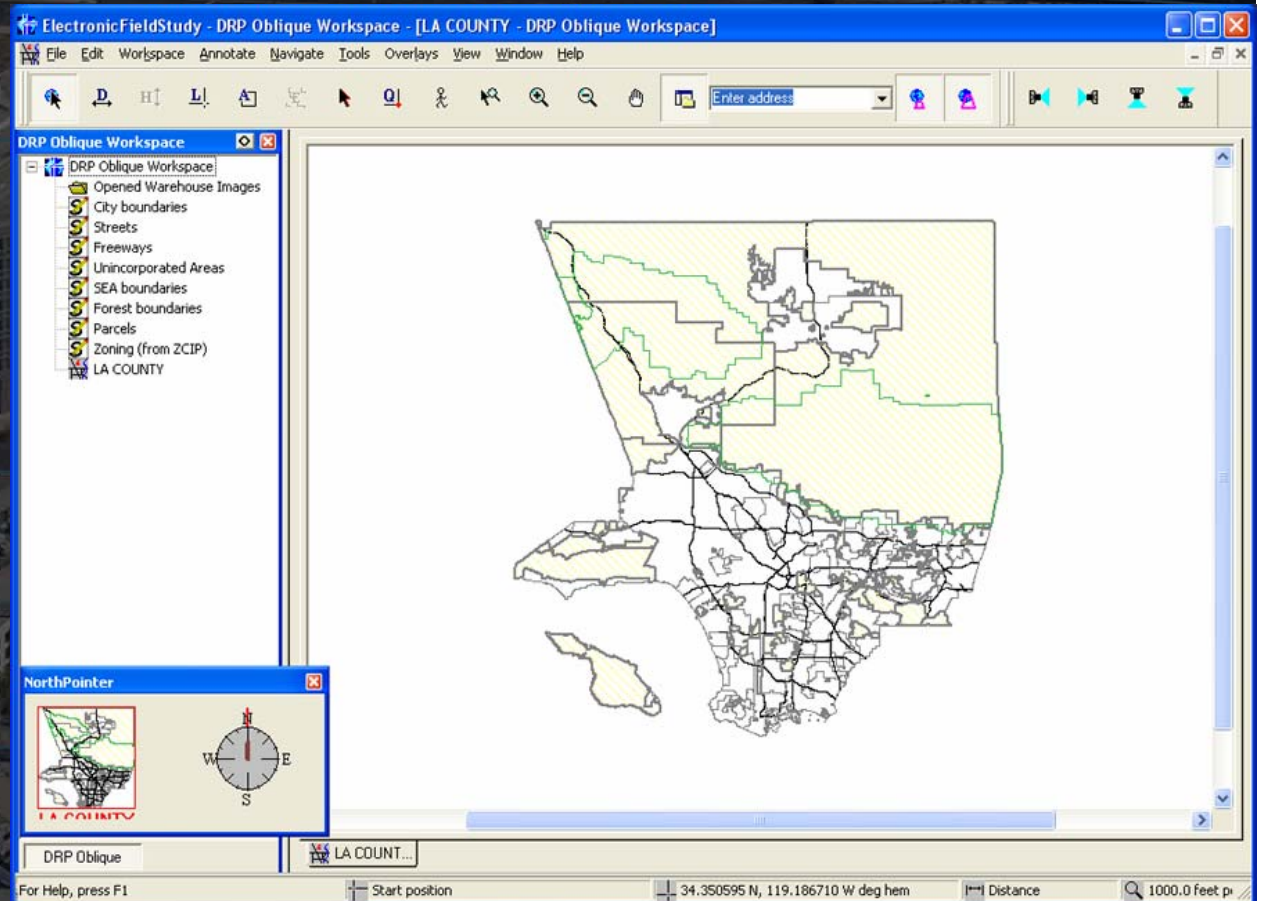
EFS

- Main application for “Power Users”
- Half-day training provided to these end users
- One “Read-Only” workspace pre-configured with base GIS layers



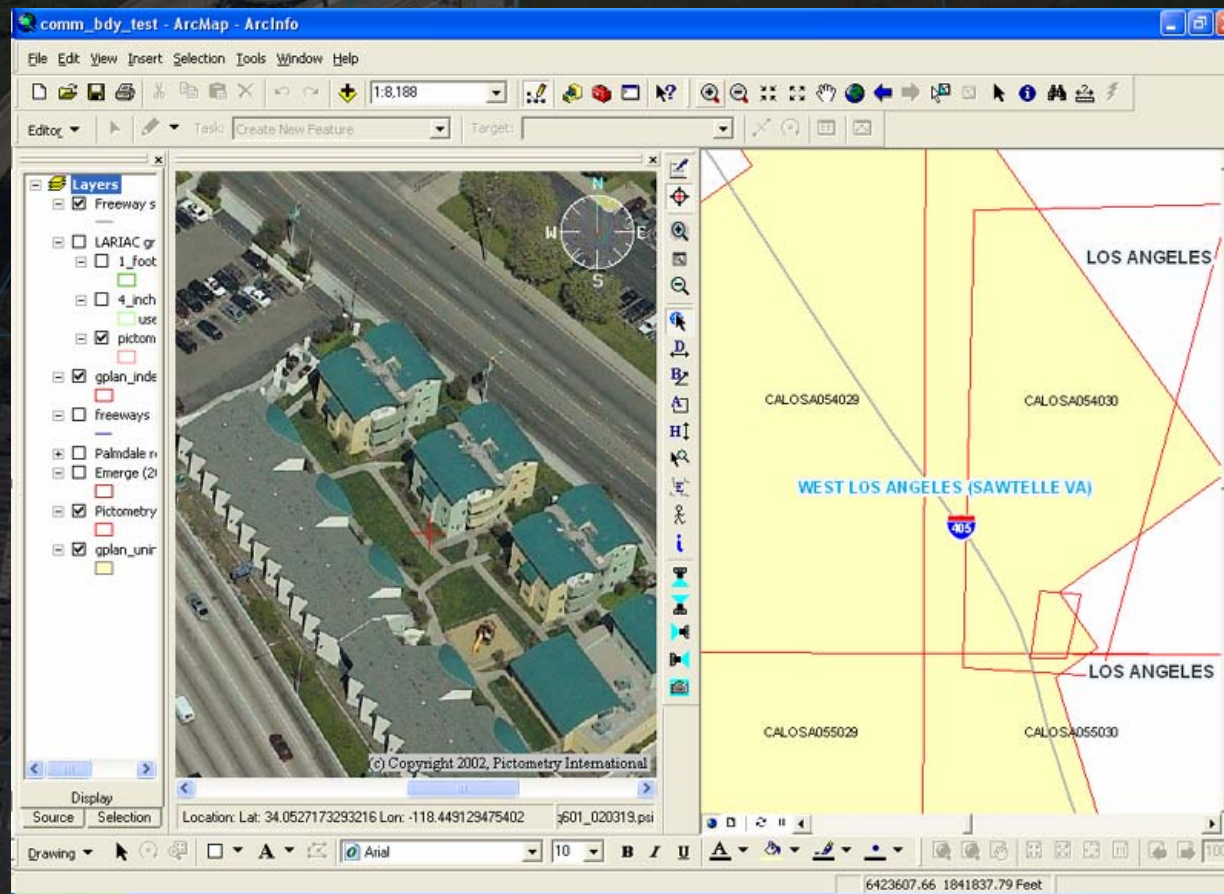
EFS – Trimmed-Down Version

- For staff at “Front Counter”
- Basic functionality
- Easier to navigate
- Simplified toolbars and larger icons



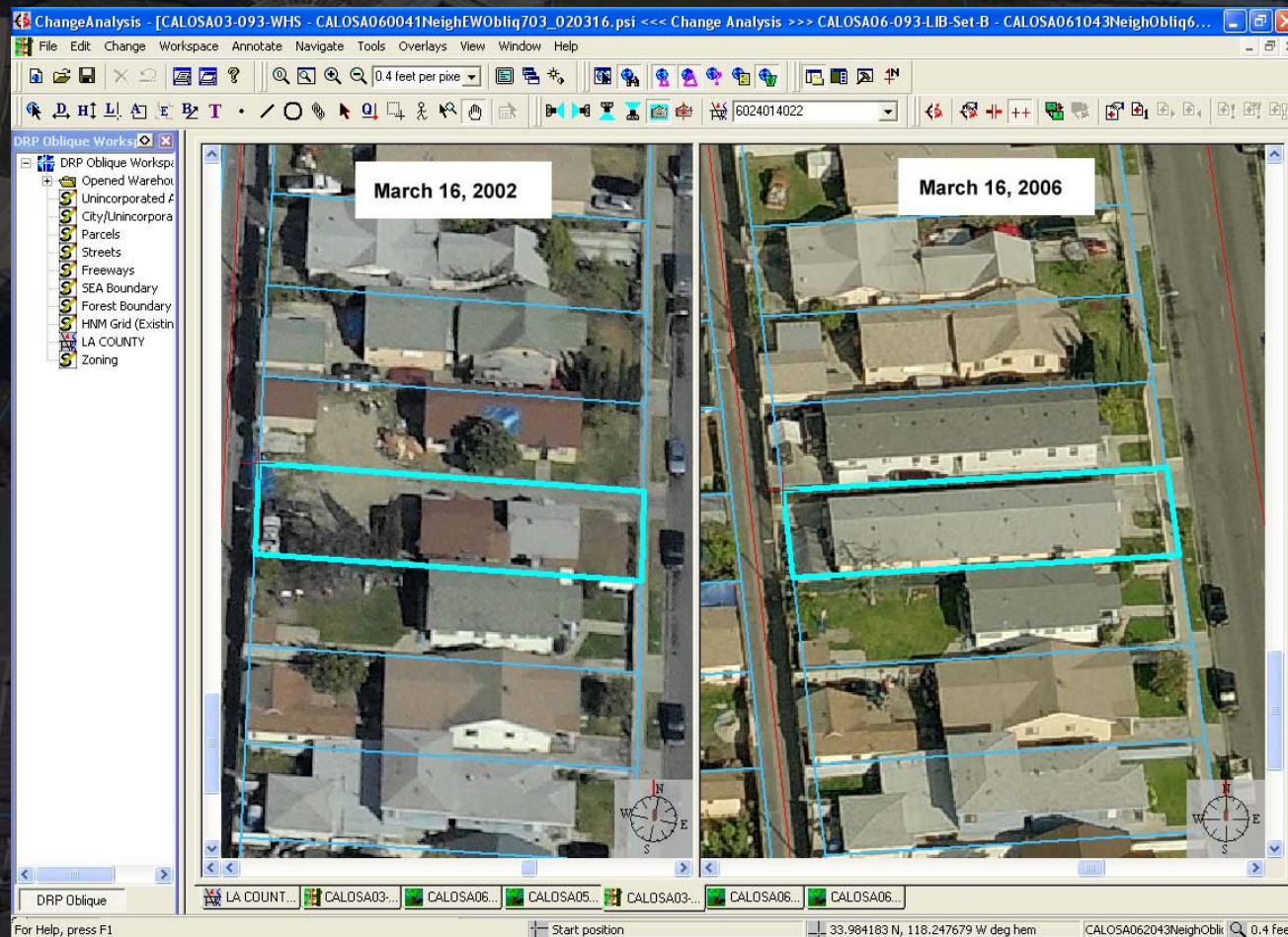
ArcGIS Extension

- Can use the product directly in ArcMap
- Main benefit is for ArcGIS users



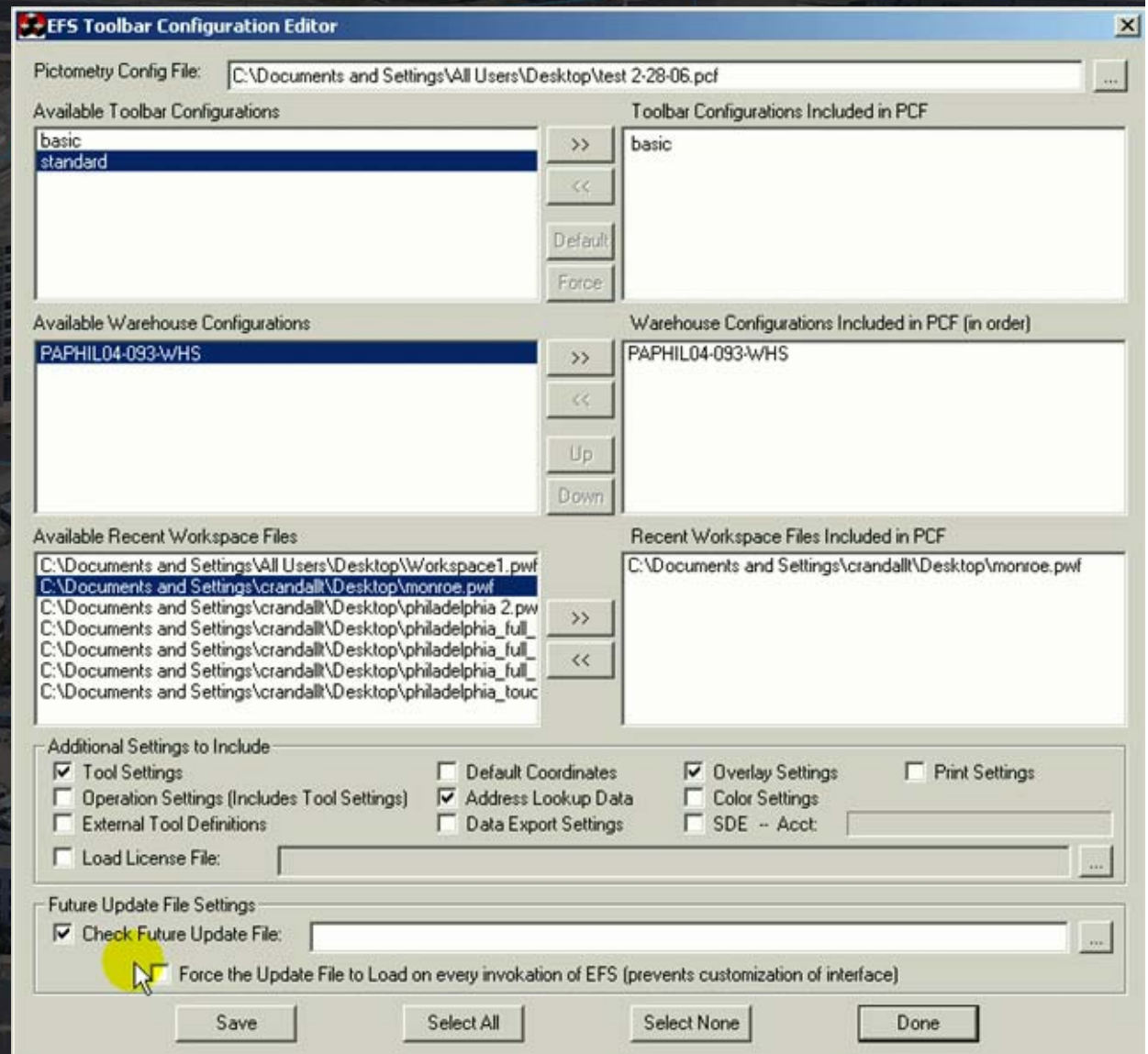
Change Analysis

- For comparisons of 2002 and 2006 imagery



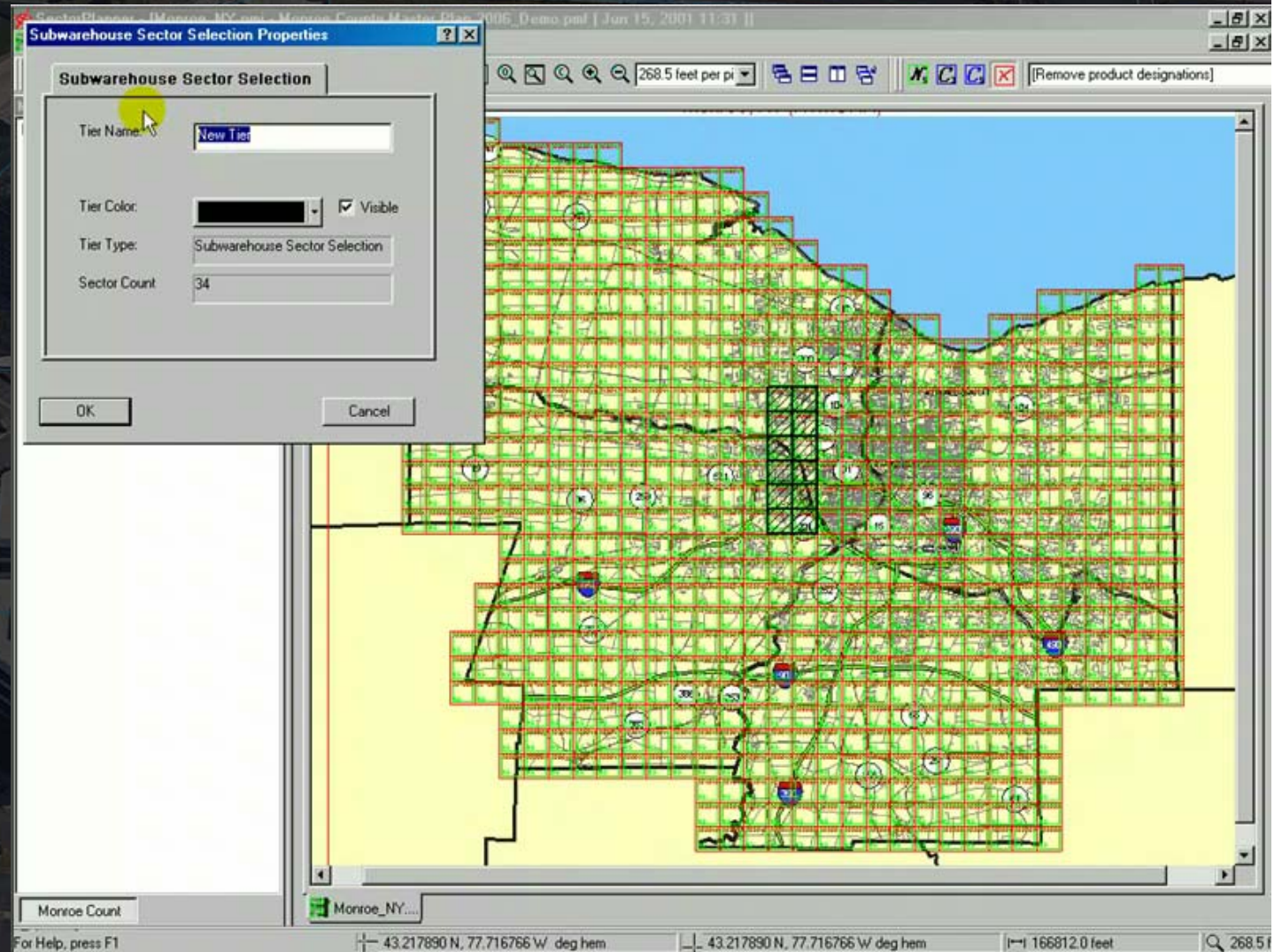
Configuration Editor

- To save all configuration settings for easier EFS deployment (and common look and feel)



Sector Planner

- For making subwarehouses



ArcIMS Integration

- An interface in an ArcIMS application that directly links to the oblique imagery
- Branding is incorporated on the interface
- May require NIW
- Requires some basic configuration

