

Using LAR-IAC Imagery

Los Angeles County
Department of Regional Planning



LOS ANGELES REGION
LAR|AC
imagery acquisition consortium



Overview

- Types of Users
- What Programs We Will Use
- Where We Plan to Go From Here



Types of Users

- GIS Section Users (my group)
- Power Users
- Regular Users
- Passive / Occasional Users



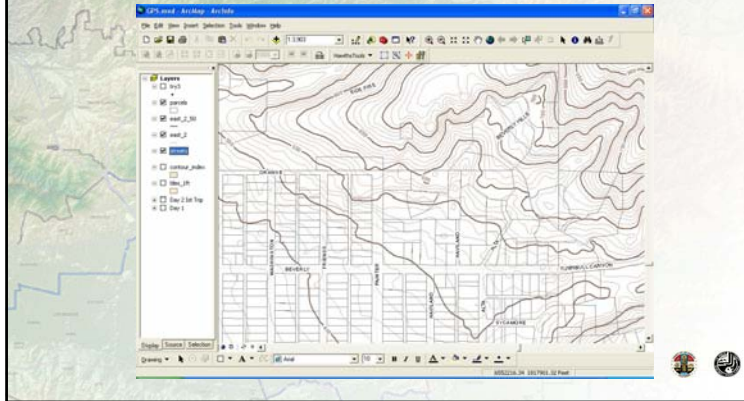
What Products We Will Use

- ArcGIS
- ArcIMS
- ArcSDE
- ArcGlobe Explorer
- EFS (Pictometry software)
- ArcGIS Server (future)

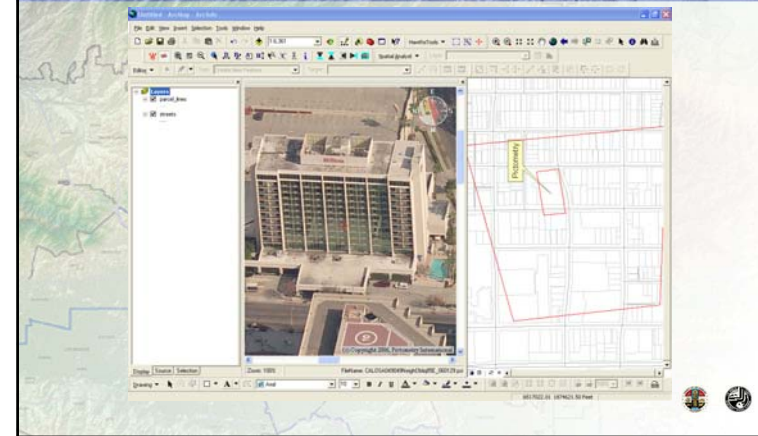


ArcGIS

- GIS Section & Power Users - orthos, contours, DEM, & hillshade

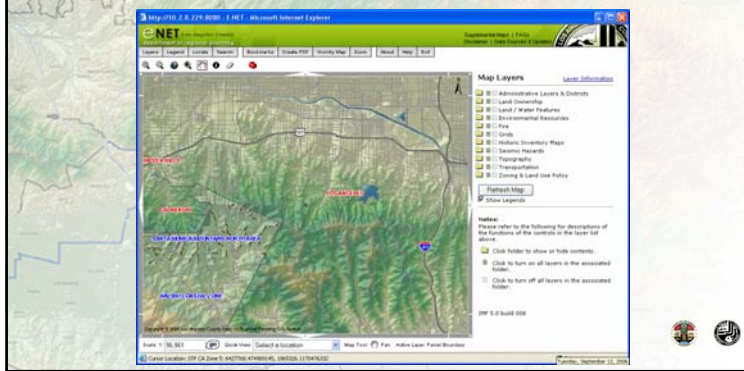


Pictometry ArcMap Extension



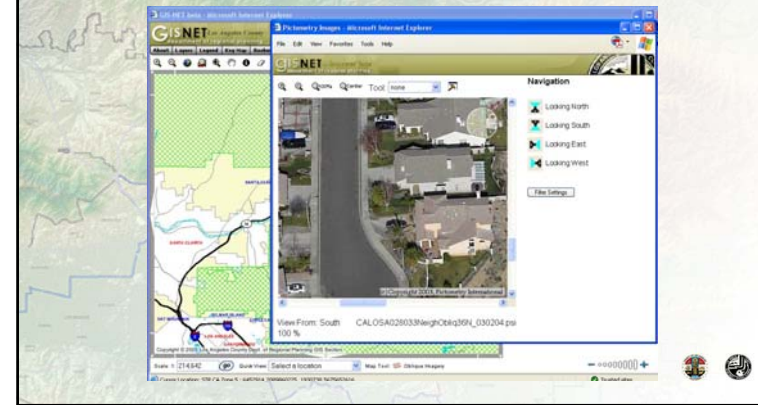
ArcIMS

- Contours, DEM, hillshade, & ActiveX extension
- Several applications for providing this data (GIS-NET, E-NET, Z-NET, SUB-NET...)



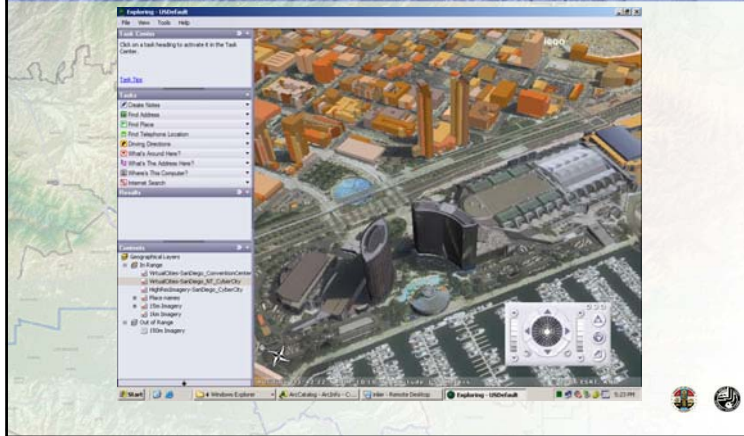
Integrating the ActiveX Control

- Using a single ArcIMS intranet application
- Access to oblique imagery



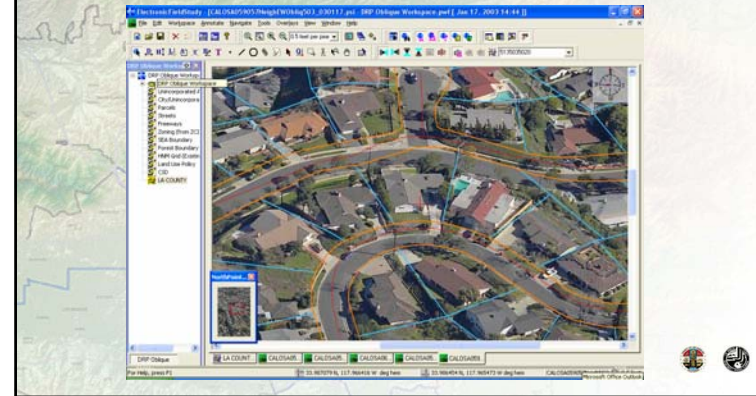
ArcGlobe Explorer

- Power Users (sample from CyberCity 3D)



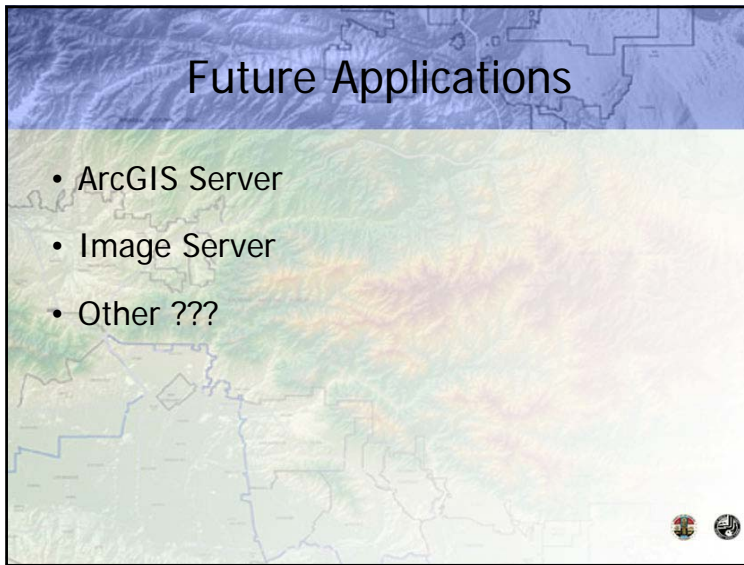
EFS (Pictometry Software)

- Pictometry – Integrating oblique imagery & GIS layers
- Some setup required for configuring GIS layers



Future Applications

- ArcGIS Server
- Image Server
- Other ???



Questions and Comments

LOS ANGELES REGION
LAR|ac
imagery acquisition consortium

