



# How To Use The Pictometry Configuration Editor

May 10, 2007  
DPW, Alhambra

Los Angeles County  
Dept. of Regional Planning  
GIS Section

# EFS Configuration Editor

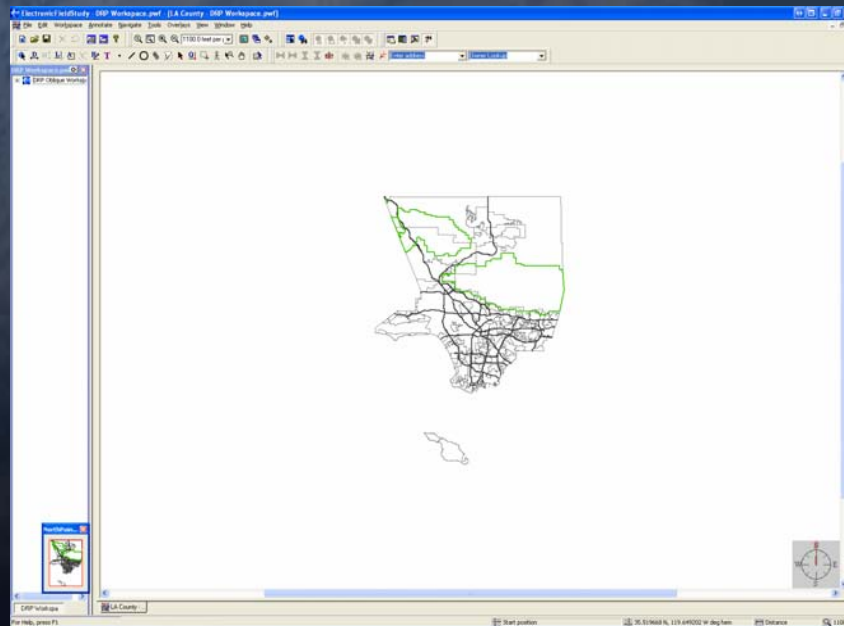
- Administrative Tool Only.
- Captures desired settings into a file.
- The file is a “Pictometry Configuration File” (PCF)
- The PCF file is used to configure machines with EFS installed already or during the installation of EFS.

# Benefits of Using

- Makes deploying to multiple users much easier.
- Can 'lock' and/or control the interface to save user time.
- Controlled interface will save support time.

# Step 1

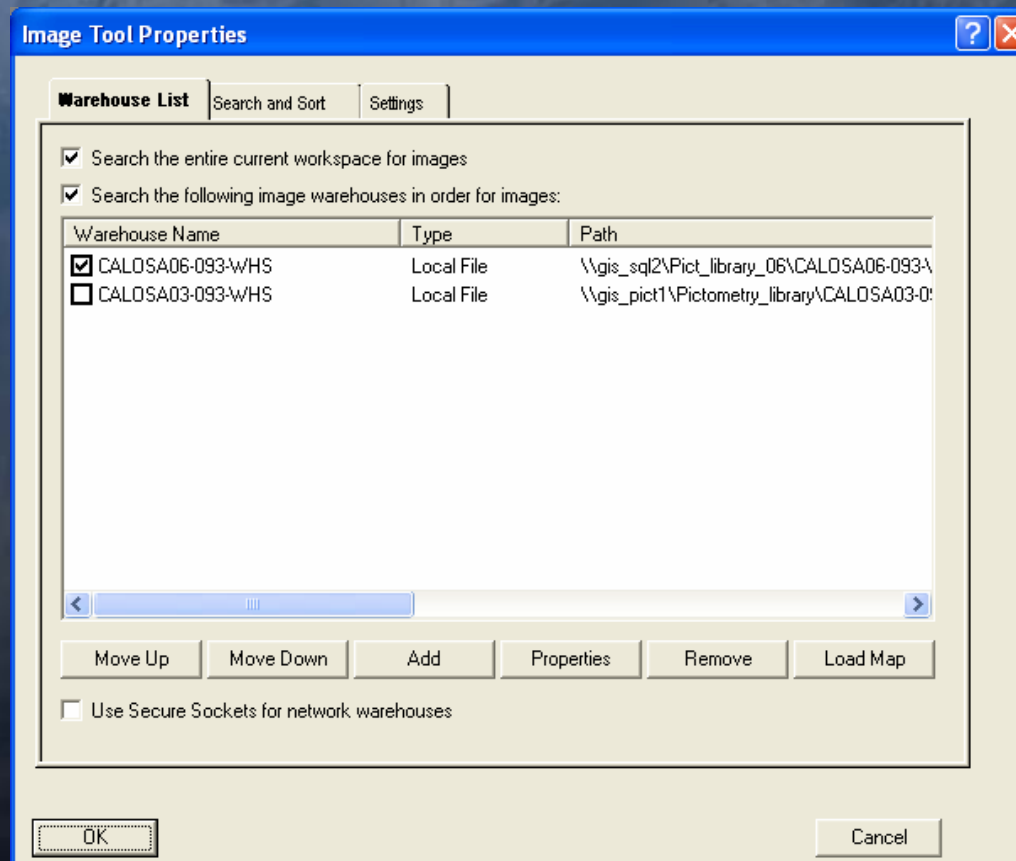
- Customize EFS exactly how you want other users to see it.



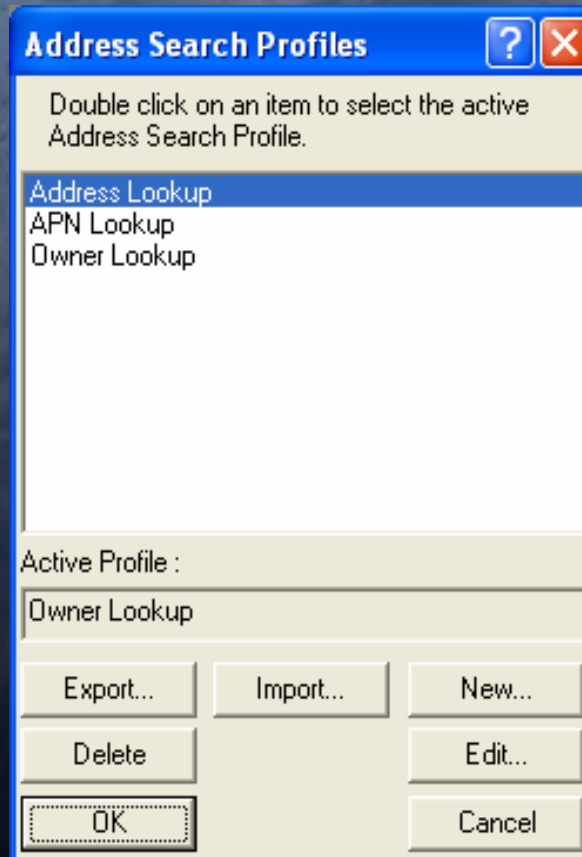
An aerial photograph of a mountain range, showing rugged terrain and valleys. The image is overlaid with a blue gradient that darkens from top to bottom. The text "What to Setup/Configure?" is centered in white.

What to Setup/Configure?

# Image Warehouse Connections



# Address Search Setup



# Tool Settings

Properties ? ✕

Distance Tool **Annotation**

Do Not Draw Lines  
 Draw Temporary Lines  
 Draw Permanent Lines

Annotation Layer: <new annotation layer>

Draw Associated Text

Text

Font: Tahoma  
Style: Bold  
Size: 12

Change Font

Text Color: ■  
Background Color: ■

Transparent Background

Line

Width: 4  
Line Color: ■

Locale

Local  Global

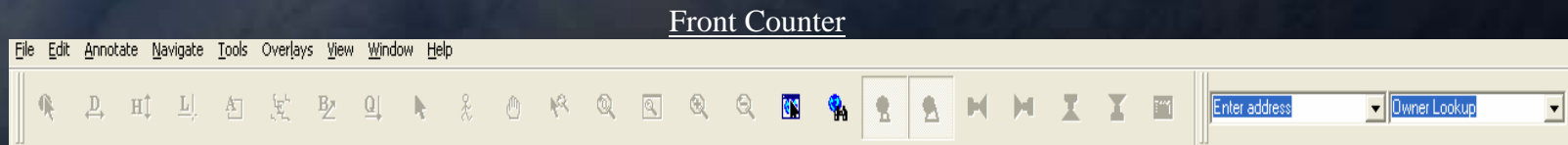
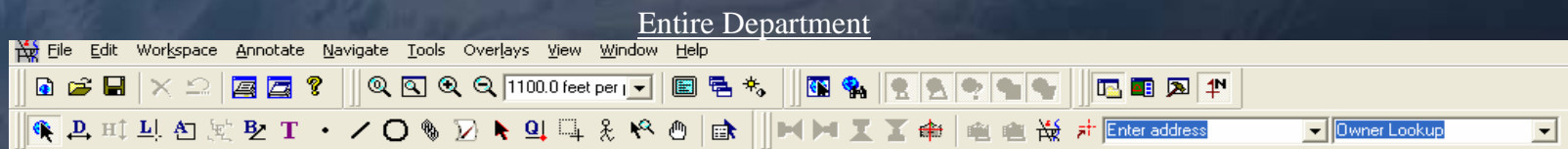
Prompt for attributes  
 Use layer attributes

OK Cancel



# Toolbars

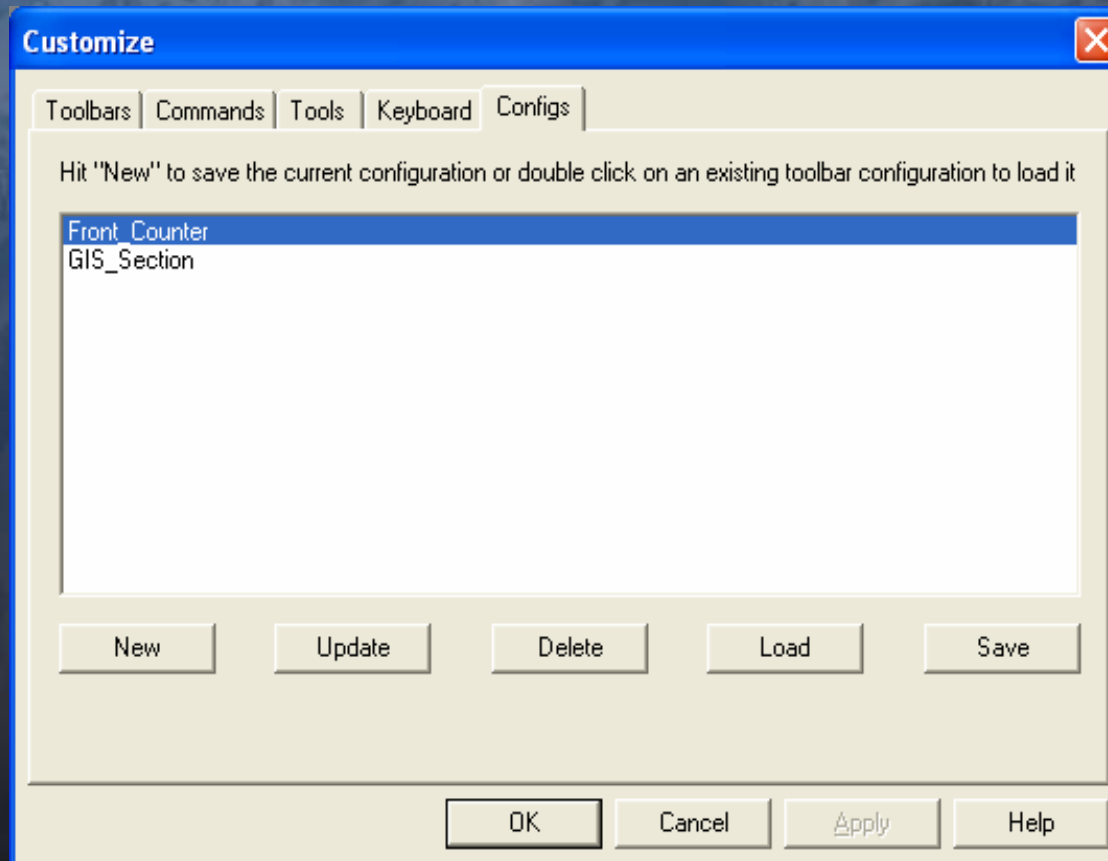
- Structure the toolbars.



## Step 2

- Save your Toolbar Configurations...
  - Tools→Customize→Configs Tab
  - Click “New”, and enter name.
  - Highlight, and click “Save”
    - You can save this anywhere on your network, but do *NOT* save it in your setup folder for EFS.

# Configs Tab...



## Step 3

- Exit EFS
- Install the Configuration Editor
  - The installer does *not* place a program shortcut on your desktop...
  - The shortcut can be found through Start→Programs→Pictometry

## Step 4

- Open the Configuration Editor, and create your PCF (Pictometry Configuration File).

# Configuration Editor

**EFS Toolbar Configuration Editor**

Pictometry Config File:

Available Toolbar Configurations

- Front\_Counter
- GIS\_Section

Toolbar Configurations Included in PCF

Available Warehouse Configurations

- CALOSA03-093-WHS
- CALOSA06-093-WHS

Warehouse Configurations Included in PCF (in order)

Available Recent Workspace Files

- \\gis\_sql2\Pict\_library\_06\DRP Workspace.pwf

Recent Workspace Files Included in PCF

Additional Settings to Include

<input type="checkbox"/> Tool Settings	<input type="checkbox"/> Default Coordinates	<input type="checkbox"/> Overlay Settings	<input type="checkbox"/> Print Settings
<input type="checkbox"/> Operation Settings (Includes Tool Settings)	<input type="checkbox"/> Address Lookup Data	<input type="checkbox"/> Color Settings	
<input type="checkbox"/> External Tool Definitions	<input type="checkbox"/> Data Export Settings	<input type="checkbox"/> SDE -- Acct: <input type="text"/>	
<input type="checkbox"/> Load License File: <input type="text"/>			

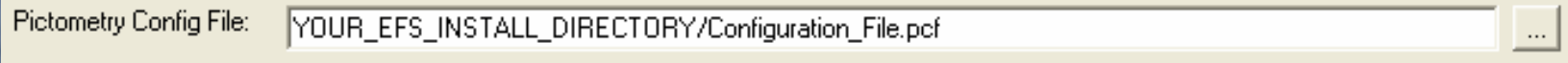
Future Update File Settings

Check Future Update File:

Force the Update File to Load on every invocation of EFS (prevents customization of interface)

Save    Select All    Select None    Done

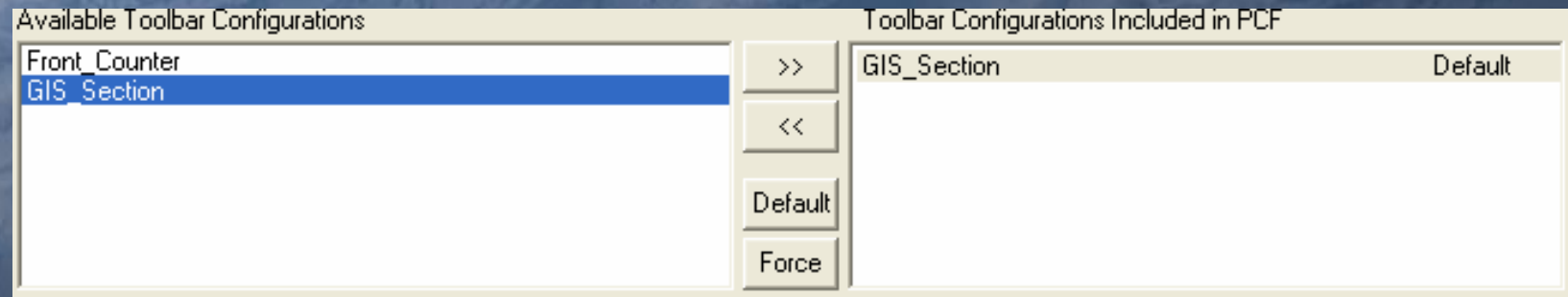
# Save PCF to....

A screenshot of a file path input field. The text "Pictometry Config File:" is on the left, followed by a text box containing the path "YOUR\_EFS\_INSTALL\_DIRECTORY/Configuration\_File.pcf". To the right of the text box is a small button with three dots "...".

Pictometry Config File: YOUR\_EFS\_INSTALL\_DIRECTORY/Configuration\_File.pcf

- Source to your EFS install folder. When installing, the PCF will automatically be applied to EFS.
- **IMPORTANT!!!** – Use UNC paths, *NOT* mapped drive letters.

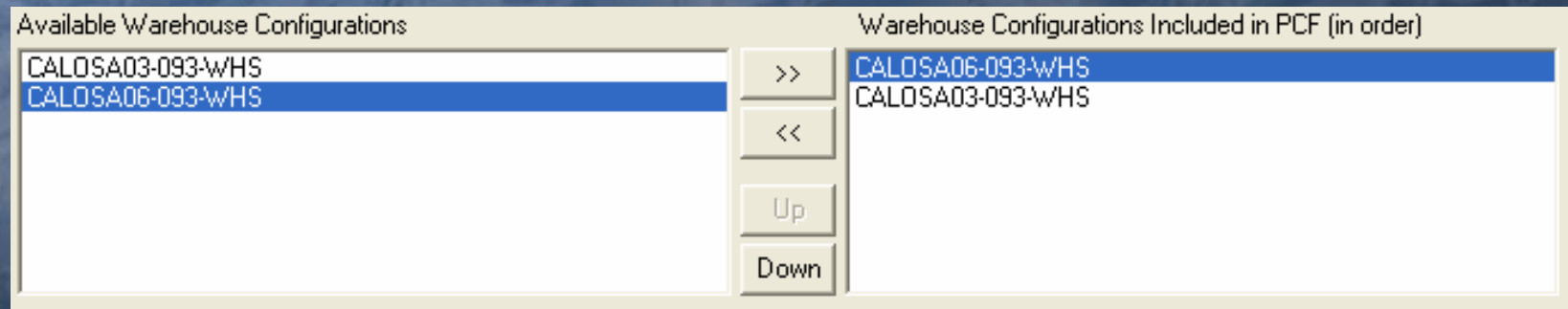
# Available Toolbar Configurations



- Highlight the desired toolbar, and move it over to the right.
  - Default – This toolbar will load only on the *first* invocation of EFS. (This allows users to customize the toolbar).
  - Force – This toolbar will load on *every* invocation of EFS. (This prevents user customization).

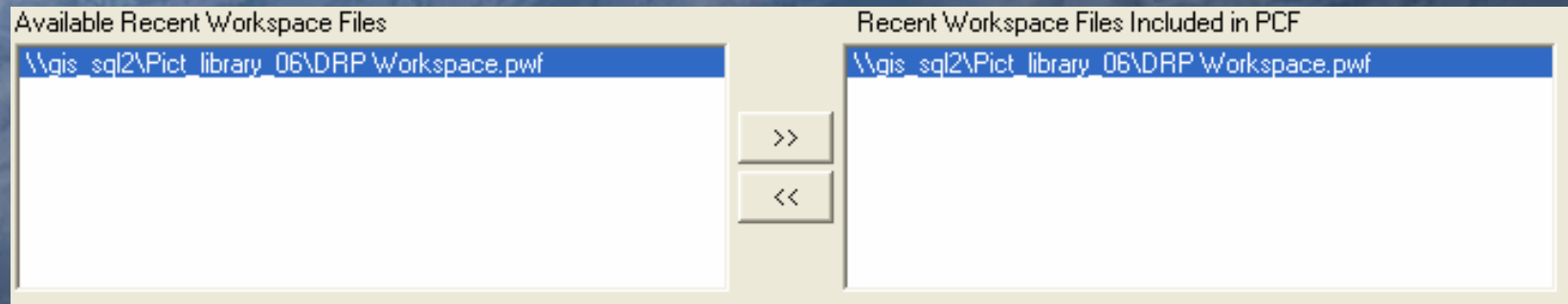


# Available Warehouse Configurations



- Highlight desired warehouses, and move them over to the right.
- You can order the warehouses...
  - Top warehouse is active, bottom warehouse is not.

# Available Recent Workspaces



- Highlight desired workspaces and move them over to the right.
- These will show up in EFS under File → Recent Workspaces.

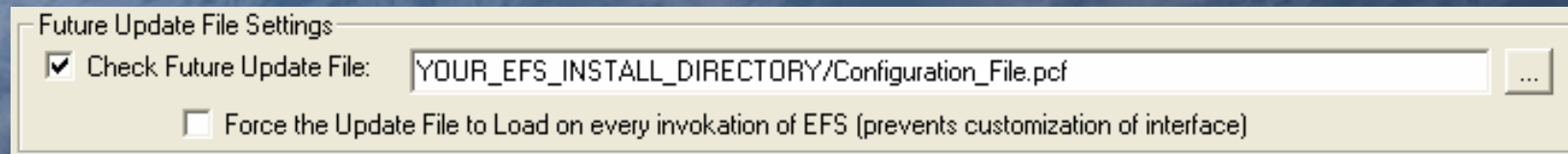
# Additional Settings

Additional Settings to Include

<input type="checkbox"/> Tool Settings	<input type="checkbox"/> Default Coordinates	<input type="checkbox"/> Overlay Settings	<input type="checkbox"/> Print Settings
<input type="checkbox"/> Operation Settings (Includes Tool Settings)	<input type="checkbox"/> Address Lookup Data	<input type="checkbox"/> Color Settings	
<input type="checkbox"/> External Tool Definitions	<input type="checkbox"/> Data Export Settings	<input type="checkbox"/> SDE -- Acct:	<input type="text"/>
<input type="checkbox"/> Load License File:	<input type="text"/>		<input type="button" value="..."/>

- This area imports tool settings.
- See the [EFS Configuration Editor Guide](#) for explanations of each setting.

# Future Update File



- Use the same source as the “Pictometry Config File” box at the top.
- This will tell EFS to automatically check the PCF file for updates.
- Check the “Force the Update File” box if you want the PCF file to load on *every* invocation of EFS. (This prevents *any* customizing of the EFS interface).

## Finished at last...

- Since you cannot reopen the PCF file once it's been created, it's a good idea to take a screenshot for future reference. This will help when you make updated PCF's.
- Click "Save", then click "Done".

# EFS Already Installed?

- Go to “File→System Setup” in EFS and click on the “Update PCF” tab.
- Click on “Load new configuration file” and navigate to your PCF.
- When prompted to check this file for future updates, click “Yes”.
- Close and reopen EFS for settings to take effect.

# Things That Might Go Wrong

- You make a change to some of the EFS settings...you need to redo the PCF before they will automatically take effect.
- The toolbar doesn't load after you do the PCF (but all other settings made it)... You may need to load the toolbar manually. (Tools→Customize→Configs Tab, Double Click.)
- PCF didn't work at all...call Jason!

# Documentation

- Listing of documentation that we provide
  - [EFS2.6 Quick Start Guide](#) (72 pages)
  - [Pictometry Quick Reference](#) (3 pages)
  - [Pictometry Supplemental](#) (210 pages)
  - [EFS Configuration Editor Guide](#) (Config Editor, 6 pages)
- Can make this available to whomever needs access to it. You can print as many as needed.



# Questions?

Contact :

Jason Levine

[jlevine@planning.lacounty.gov](mailto:jlevine@planning.lacounty.gov)

(213) 974-8275