



California Imagery

Urban and rural imagery developed by municipal, county, regional, state, and federal partners across the state...

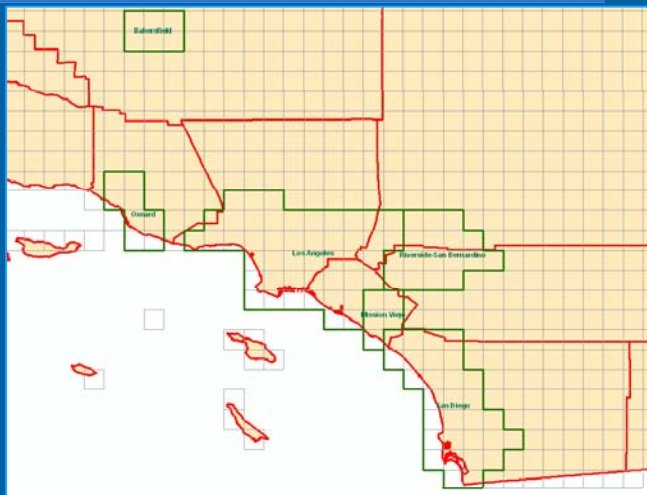


Imagery generation possibilities

- HSIP (Homeland Security Infrastructure Program) 133 Urban Areas
- National Agriculture Imagery Program
- Standalone local/regional/state projects
- Imagery for the Nation proposal
- Combination of the above



Southern CA urban areas



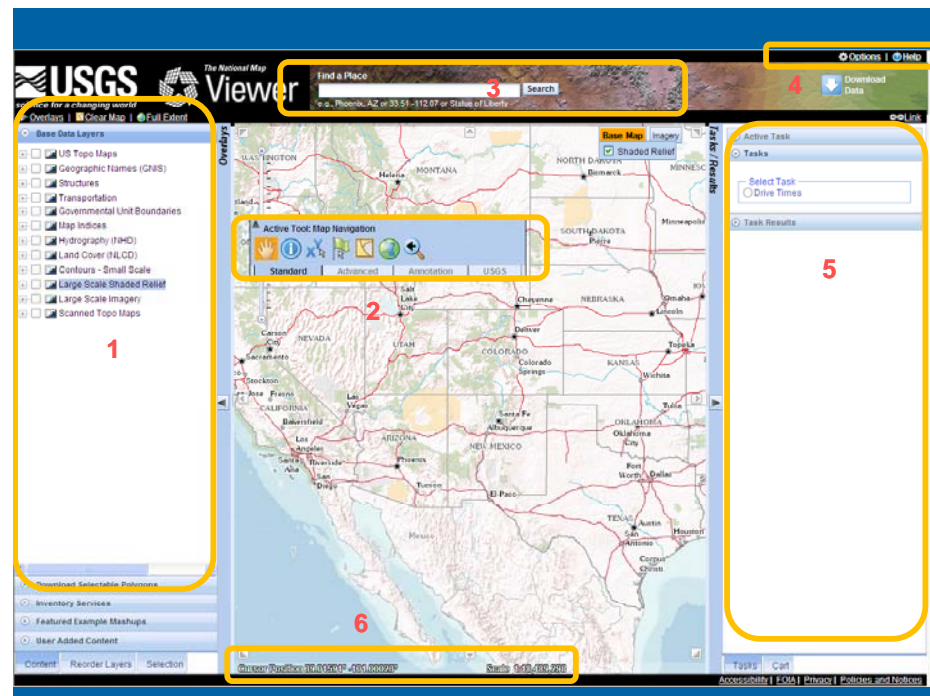
HSIP urban areas

- One foot, or better, natural color imagery
- Optimal refresh cycle is two to three years
- Covers 133 major urban areas across USA
- Funds provided by National Geospatial Intelligence Agency (NGA) but applied through USGS
- Public domain data preferred
- Each urban area has a defined footprint based on 7.5-minute quadrangles
- Partnerships with local and regional government are welcome (examples include CIRGIS, LA County, S. CA Association Governments, Solano County, Kern County)
- Partnerships can extend projects beyond NGA footprints and improve resolution and image band selection
- Production can be managed by partners (such as LAR-IAC, or by USGS vendors)



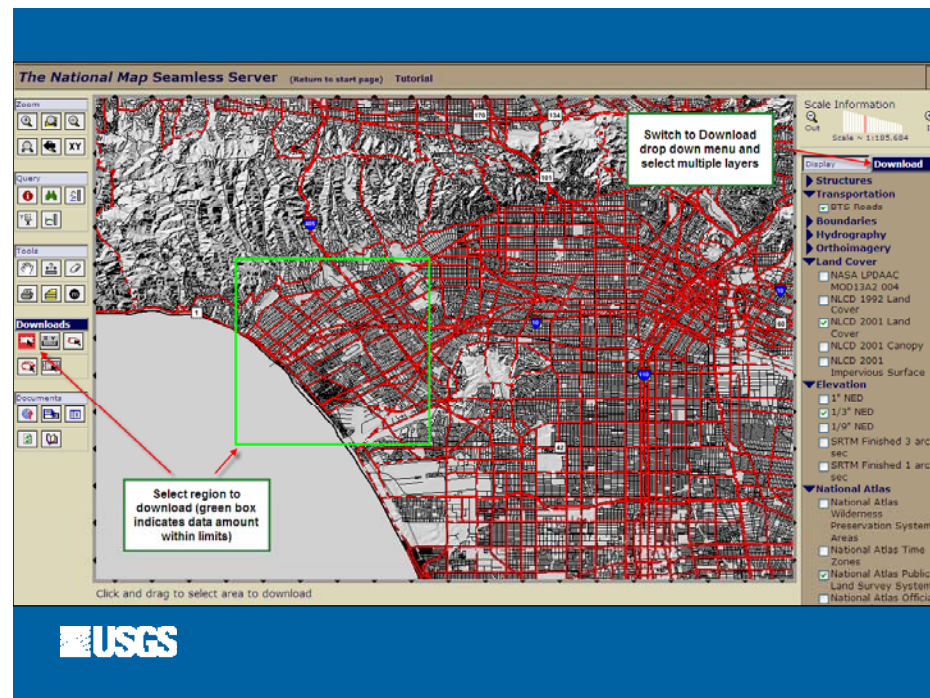
Where to find LAR-IAC3 imagery (besides LA County)?

- Cal-Atlas – atlas.ca.gov
(imagery services are pending)
- USGS – seamless.usgs.gov
- USGS – nationalmap.gov/viewer
- San Diego Supercomputer Center
- USGS liaisons



USGS Seamless Server

- Access to many digital layers from USGS and partner agencies
- Able to view and download files
- Can see dataset extents (footprints) and metadata
- See: seamless.usgs.gov



USGS uses of LAR-IAC data

- National base map (part of The National Map and the National Spatial Data Inventory)
- Input for National Elevation Dataset
- Serves research in LA region by biology, water, and geology divisions
- USGS offices in LA Basin area (Pasadena, Irvine, Riverside)



Drew Decker
4165 Spruance Road, #200
San Diego, CA 92101
619-225-6430 office
619-417-2879 cell
ddecke@usgs.gov

Carol Ostergren
3020 State University Drive East, Ste 4003
Sacramento, CA 95819
916-278-9510
916-278-9514 (fax)
costergren@usgs.gov

