

LARIAC4 (Pictometry) Access Methods

Nick Franchino

LA County Dept. of Regional Planning



Why We Are Interested in Access

Methods

- There are many ways to get to the oblique [and ortho] imagery
- We want you to get the most out of your investment
- We want you to be able to use the data efficiently
- Usage is not as high as it should be...

Access Methods

- Pictometry Online (POL)
- CONNEXTE Explorer (new version slated for 10/21/15)
- COM Pass (to POL and CONNEXTE Explorer)
- IPA (imagery in a small popup window)
- Gateway (built into our Parcel Profile Report)
- ArcMap Add-in
- Mobile (CONNEXTE Explorer)
- EFS (for offline use – but you need the imagery warehouses to make it work)

Pictometry Online (POL)

Pictometry Online 1.11.0

Workspace | Source: Address | Enter search criteria

Workspace (Author)

- Annotations
- Bookmarks
- Layers
 - DRP_CSD Area Specific Standards
 - DRP_Community Standards District (CS
 - DRP_Environmentally Sensitive Habita
 - DRP_Land Use Policy - Comm and Are
 - DRP_Land Use Policy - General Plan (1
 - DRP_Sensitive Environmental Resourc
 - DRP_Significant Ecological Area (SEA)
 - DRP_Subdivision_Activity_Maps_Link
 - DRP_Transit Oriented District (TOD)
 - DRP_Zoning
 - DRP_Zoning Shading w Labels
 - LARIAC - Address Points
 - LARIAC - Buildings (2014)
 - LARIAC - City Boundaries (201407)
 - LARIAC - Community Boundaries
 - LARIAC - County Boundary
 - LARIAC - Land Types
 - LARIAC - Parcels (cached) - August 201
 - LARIAC - Parcels (streamed)

Properties

Name	Value

Selections



Height: 87.61 Feet

© 2014 Pictometry

Height: 87.61 Feet

Pictometry Online

Pictometry Online 1.10.2

Welcome Nick Franchino | Admin | Coverage | Logout

The screenshot displays the Pictometry Online web application interface. The main map area shows an aerial view of a city block with various zoning codes overlaid in different colors. The codes include R-3, R-4, R-2, R-3P, C-3, C-2, C-3-DF, C-3-DR, C-M, O-S, M-1, M-2, M-3, CPD, R-3-CRS, RPD-1-9.2U, and I-1. A central green area is labeled 'O-S' and '2 - Low/Medium Density Residential (6 to 12 du/ac)'. A yellow area is labeled '3 - Medium Density Residential (12 to 22 du/ac)'. A blue area is labeled 'TC - Transportation Corridor'. A red area is labeled 'I - Major Industrial'. The interface includes a top navigation bar with 'Workspace', 'Address', and search criteria. A left sidebar shows 'Workspace (Author)' with layers like 'Address Points', 'Building Outlines (2008)', 'City Boundaries - Legal (201311)', 'CSD Subarea', and 'Communities Boundaries'. A bottom status bar shows 'No Matching Results' and 'Date: 01/04/2011 | Level: Community | Scale: 25%'.

No Matching Results

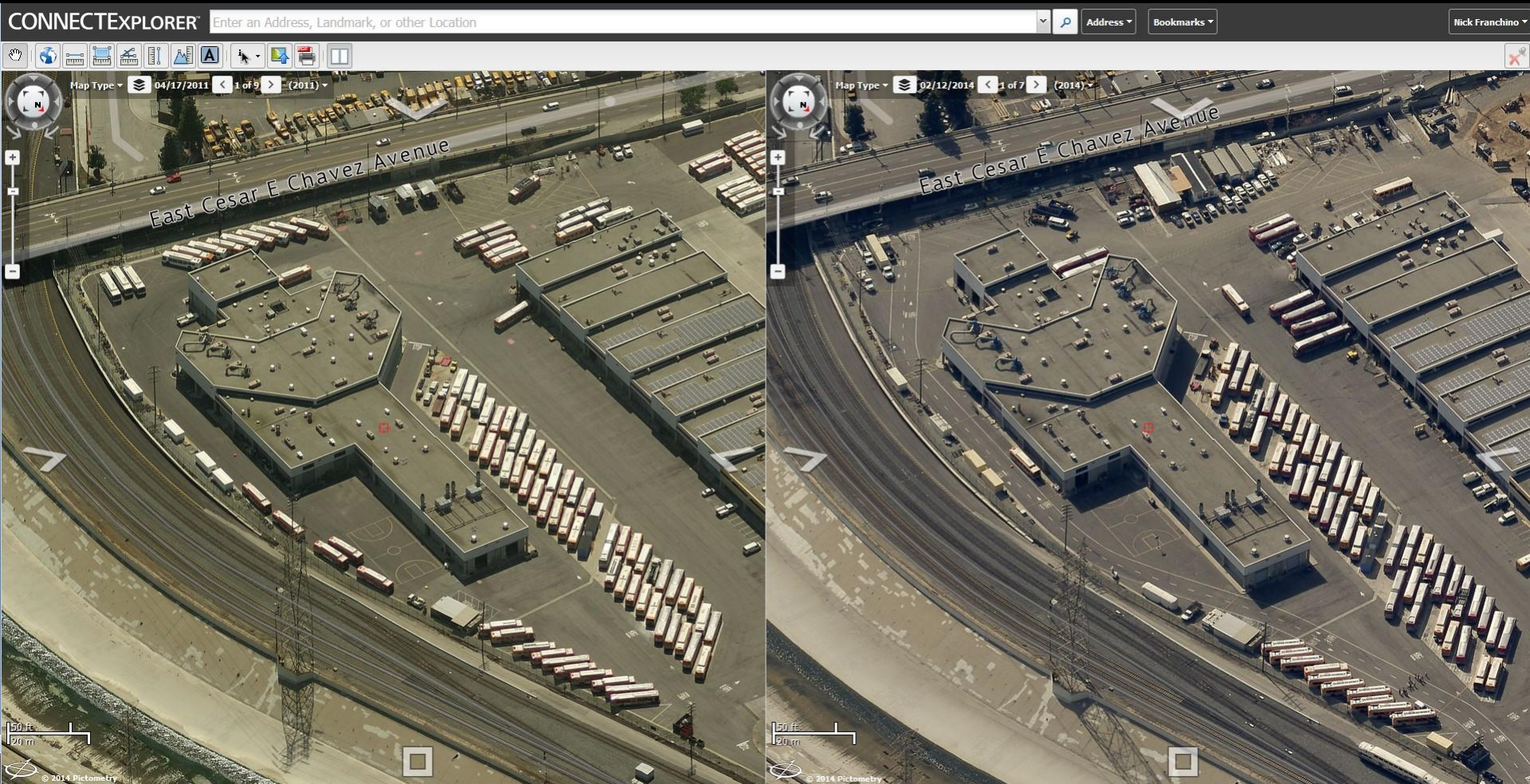
Date: 01/04/2011 | Level: Community | Scale: 25%

CONNECTExplorer

CONNECTEXPLORER™ Enter an Address, Landmark, or other Location



CONNECTExplorer



CONNECT EXPLORER - NextGen (10/21/15)



BUTTONS: 1 = SEARCH, 2 = BOOKMARKS, 3 = LAYERS, 4 = MEASURE/ANNOTATE, 5 = IDENTIFY, 6 = ACCOUNT, 7 = MAP TYPE, 8 = SELECT DATE, 9 = PREVIOUS IMAGE AND NEXT IMAGE, 10 = DUAL PANE, 11 = GPS TOOL, 12 = EXPORT IMAGE / SHARE LINK

Pictometry COM Pass

- A Pictometry Widget was created for our internal GIS web-mapping application.
- The user activates the tool, and clicks on the map; the coordinates of that click are appended to the POL URL, and POL is opened in a new browser window.

Map Layers List

Google/Bing

POL

Search and Locate Tasks Map & Data Sources Printing & Reports



1. Click the button
2. Click on the map to view the imagery for

Activate Pictometry Online (POL)

Pictometry Online - Windows Internet Explorer

http://pol.pictometry.com/en-us/app/default.php?lat=33.974640&lon=-118.234501&... Google

Favorites: GIS-NET3 Public, GIS-NET3, GIS Section Blog, GIS-NET (Theme Edition), LA County GIS Viewer, PAIS - Silverlight

Pictometry Online

Welcome Lariac Guest | Coverage | Logout

Source: Address Enter search criteria Preferences Feedback Help

Workspace

- Layers
 - Address Points
 - Building Outlines (2008)
 - CSD Subarea
 - City Boundaries
 - Community Standards D
 - Environmentally Sensitiv
 - Land Types
 - Land Use Policy
 - Parcels (Cached)
 - Parcels (Streamed)
 - Points of Interest
 - SUBDIVISION_LINK_TES
- Selections

Map Tools: D, H, A, E, L, B, P, Q, T, etc.

Map: Pictometry, Map, Auto

Map Orientation: 1/14

Map Labels: East Florence Avenue, Alameda Street

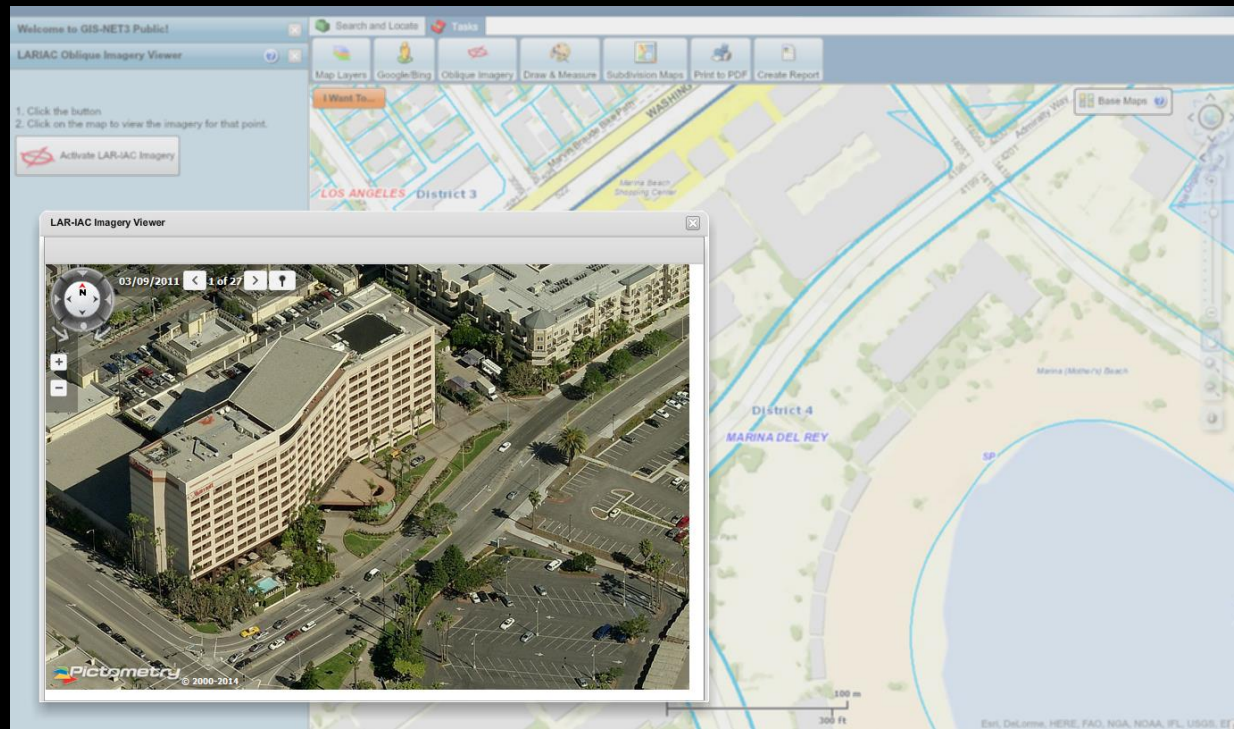
Map Scale: 100%

Date: 03/08/2011 | Level: Neighborhood | Scale: 100%

Internet | Protected Mode: On

Pictometry IPA (Widget)

- Available from our public facing GIS web mapping applications:
<http://planning.lacounty.gov/gisnet3>



Pictometry IPA (Widget)

gis.planning.lacounty.gov/GIS-NET3_Public/Viewer.html

GIS Section Blog GIS-NET3 GIS-NET3 Newest GIS-NET3 Public LA County GIS Viewer Commuter Express 423... LADOT Transit Live Bus City Annexations GIS-NET3 Help Airport Land Use Com... GP Highlights Storytelling with Maps

GIS-NET3 Public Planning & Zoning Information
Department of Regional Planning for UNINCORPORATED LA County

Map Tool: Pan Getting Started Enter an APN or Address with city or zip code Search

Welcome to GIS-NET3 Public!

LARIAC Oblique Imagery Viewer

1. Click the button
2. Click on the map to view the imagery for that point.

Activate LAR-IAC Imagery

Search and Locate Tasks

Map Layers Google/Bing Oblique Imagery Draw & Measure Subdivision Maps Print to PDF

I Want To...

Base Maps

LAR-IAC Imagery Viewer

01/21/2011 1 of 16

Pictometry © 2009-2014

Gateway

- Property focused
- Request and download discrete images for a location



View Looking North



View Looking South



View Looking West



View Looking East

Gateway

APN: 4382-016-005

Address: 2543 BENEDICT CANYON DR, LOS ANGELES, CA 90210



View Looking North



View Looking South



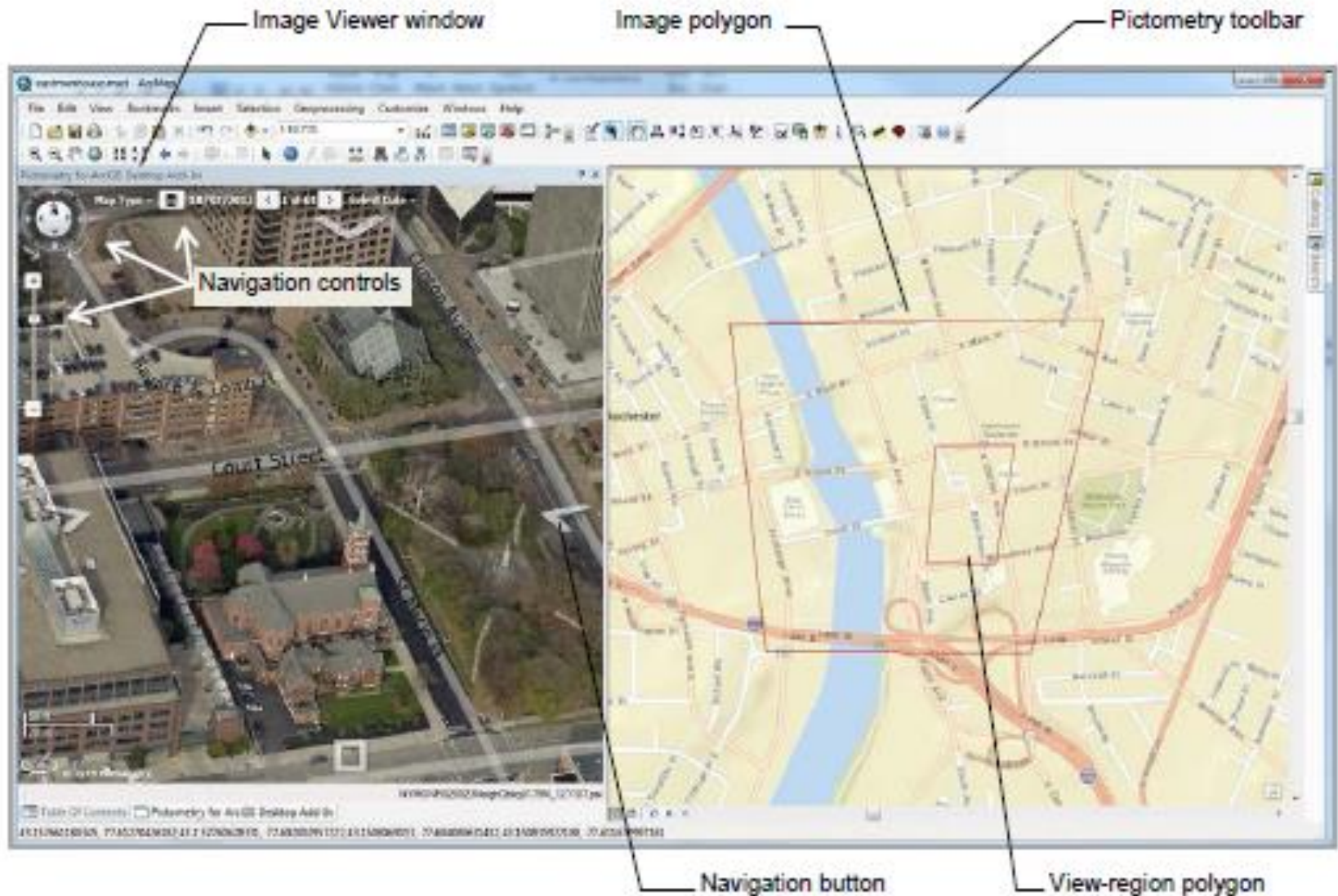
View Looking West



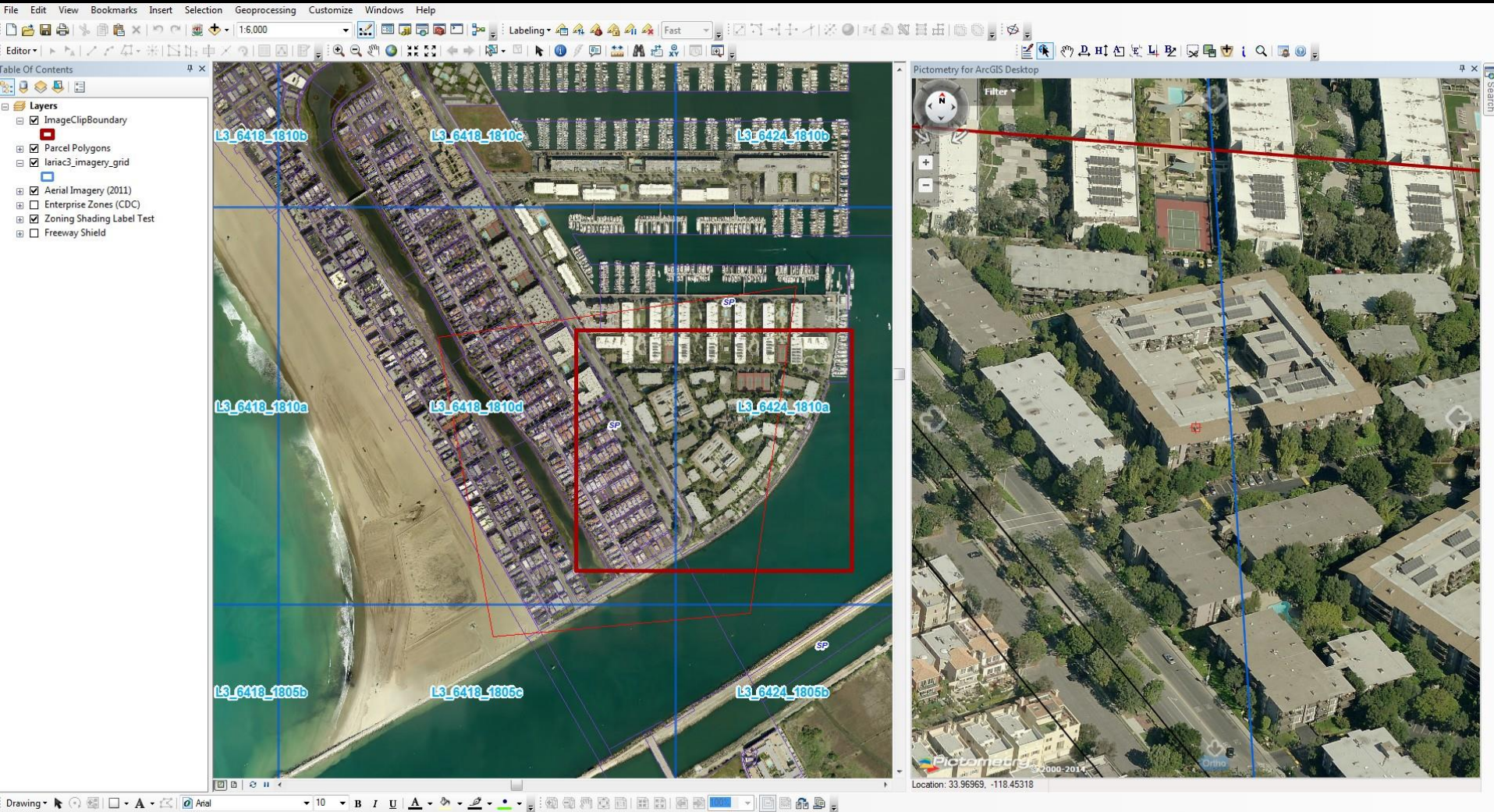
View Looking East

ArcMap Add-in

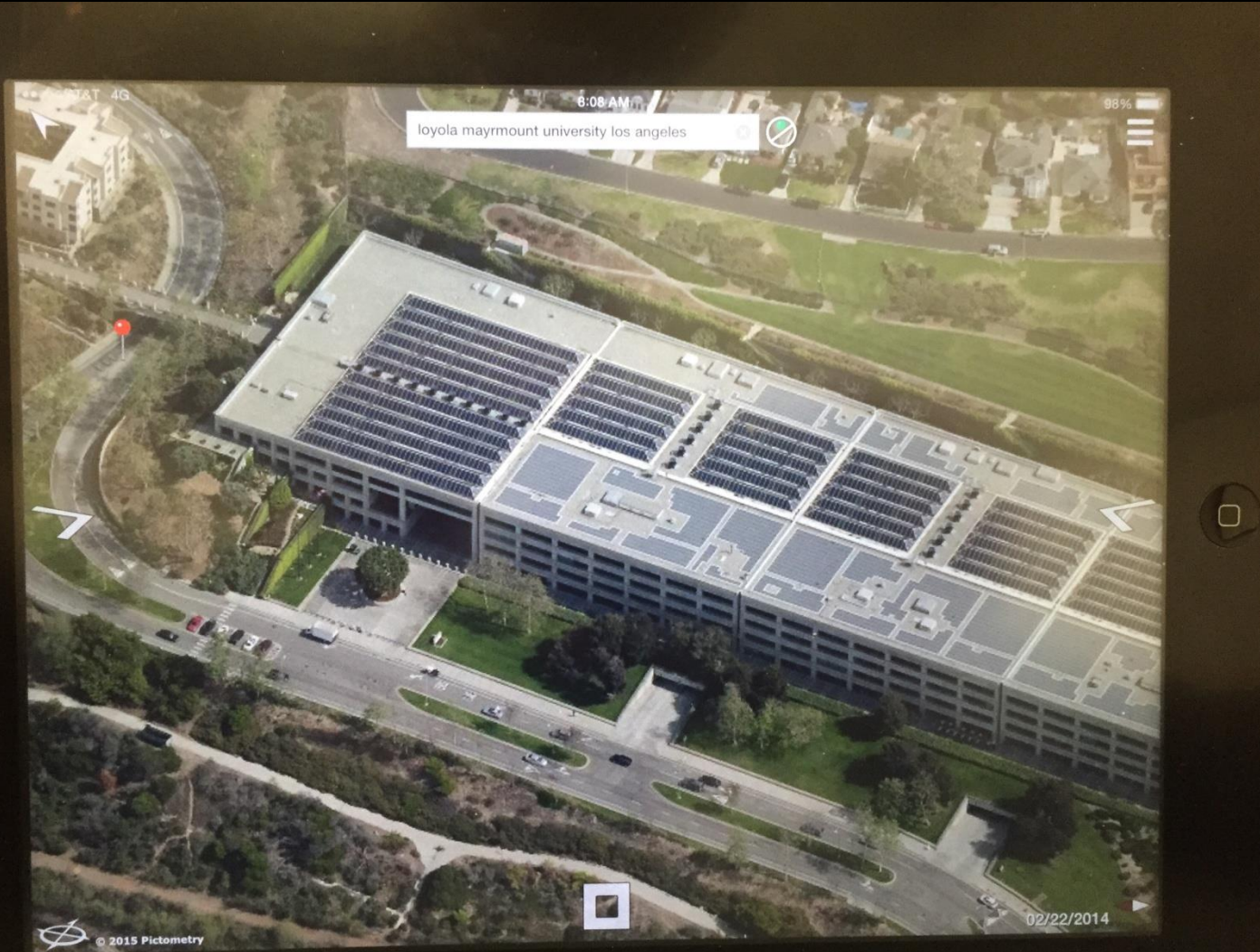
(AutoDesk as well)



ArcMap Add-in (AutoDesk as well)



Mobile (CONNECT Explorer - on iPad)



EFS (special use cases only)

The screenshot displays the 'ElectronicFieldStudy' application window. The title bar reads: 'ElectronicFieldStudy - [CALOSA064054NeighEWOblig905_020306.psi - DRP Oblique Workspace [Mar 06, 2002 08:13]'. The menu bar includes: File, Edit, Workspace, Annotate, Navigate, Tools, Overlays, View, Window, Help.

The main workspace shows an aerial photograph of a building complex with several overlaid layers. A legend on the left, titled 'DRP Oblique Workspace', lists the following layers: DRP Oblique Workspace, Opened Warehouse Image, Unincorporated Area (shac), City/Unincorporated Bounc, Parcels, Streets, Freeways, Zoning (from ZCIP), SEA Boundary, Forest Boundary, HNM Grid (Existing Maps Or), and LA COUNTY. The map shows a large building with a red roof and a blue-tinted area, possibly representing a specific zone or boundary. A scale bar indicates '0.5 feet per pixel'. A compass rose is visible in the bottom right corner of the map area.

A small inset window titled 'NorthPoint...' is located in the bottom left corner, showing a zoomed-in view of a specific area on the map.

The taskbar at the bottom shows several open applications: 'DRP Oblique', 'LA COUNT...', 'CALOSA06...', 'CALOSA06...', 'CALOSA06...', 'CALOSA06...', and 'CALOSA064...'. The system tray at the bottom right displays the current coordinates: '33.906330 N, 118.011213 W deg hem' and '33.906740 N, 118.010499 W deg hem', along with the file name 'CALOSA066055CommEW' and the scale '0.5 feet'.

Desktop Applications

- Electronic Field Study - EFS (Requires Local Imagery Data)

Web Applications

- Pictometry Online (POL)
 - Connect Explorer
- Connect iPad App (Mobile)
- Connect Mobile (Mobile)



Desktop Integrations

- COM (Requires local Imagery Data and EFS software)
 - Active X (Requires Local Imagery Data)
- IPA (Integrated Pictometry Application) via Browser Control

Web Integrations

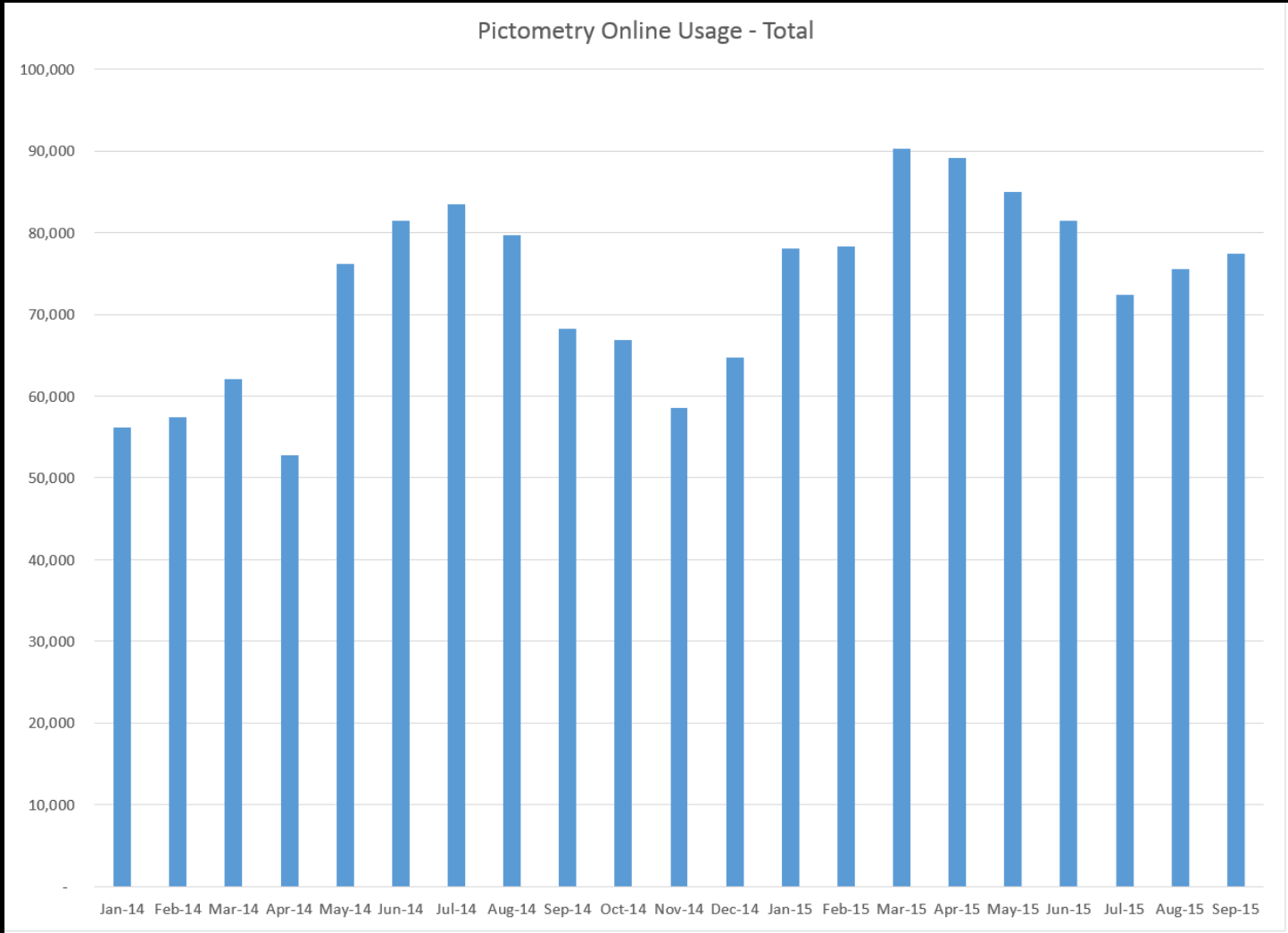
- IPA (Integrated Pictometry Application)
 - ArcGIS Server Flex Widget
 - ArcGIS Server Silverlight Widget
 - Image Navigator API (JavaScript)

Questions?

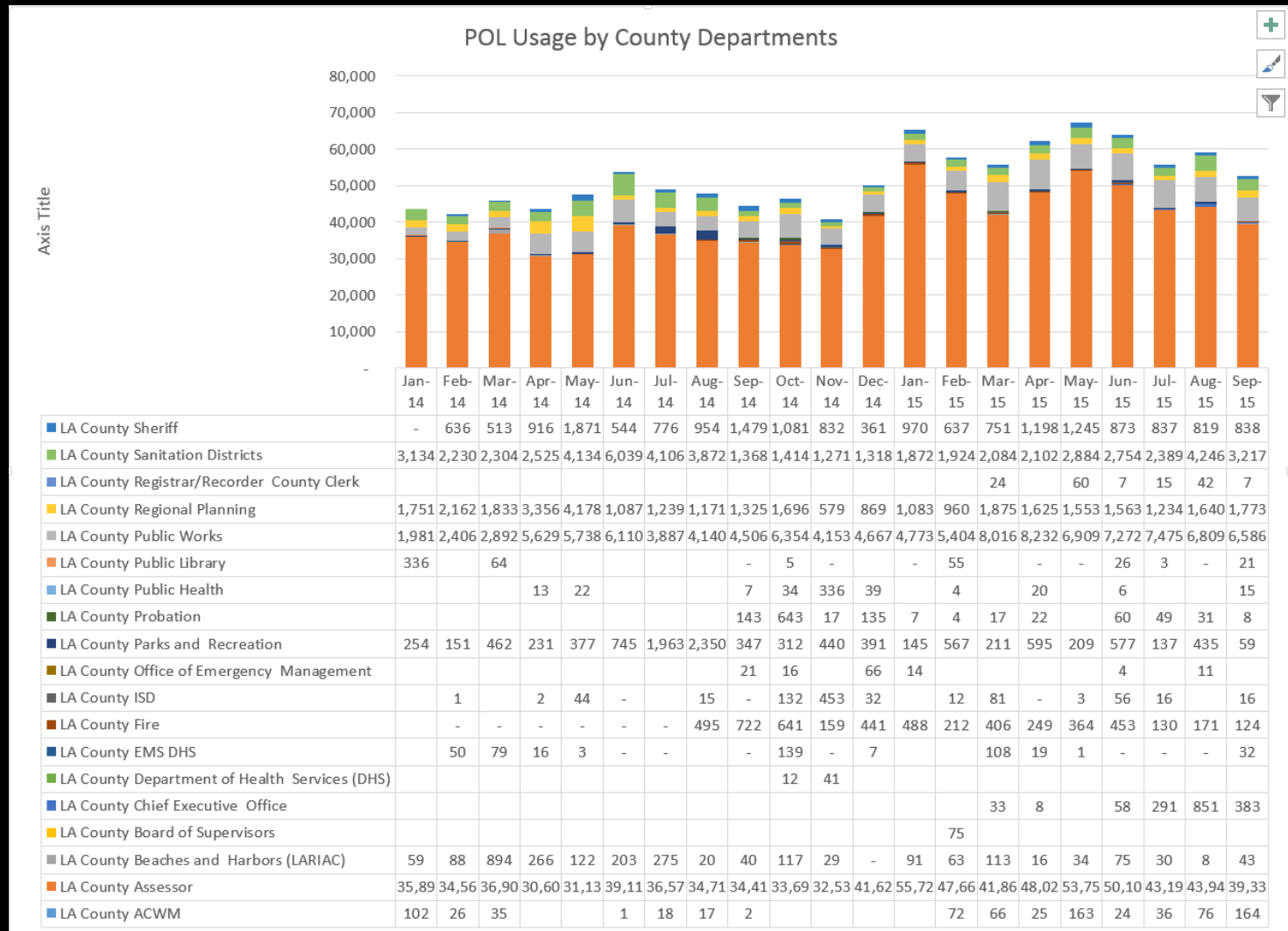
Nick Franchino
LA County Dept. of Regional Planning



POL Usage



POL Usage by County



Participants with limited use

- The following participants show low POL use:
 - Azusa
 - Beverly Hills
 - Burbank
 - Cerritos
 - Claremont
 - Covina
 - Hermosa Beach
 - Manhattan Beach
 - Norwalk
 - San Dimas
 - Santa Monica
 - Whittier
 - LA City Fire & Police
 - LA DWP
 - LA County Sheriff
 - LA County TTC
- Let Pictometry schedule training and outreach with you.