

nearmap



Agenda

nearmap overview – 2 min

nearmap demo – 10 min

nearmap integrations – 5 min

Q&A – 3 min

Why?

How?

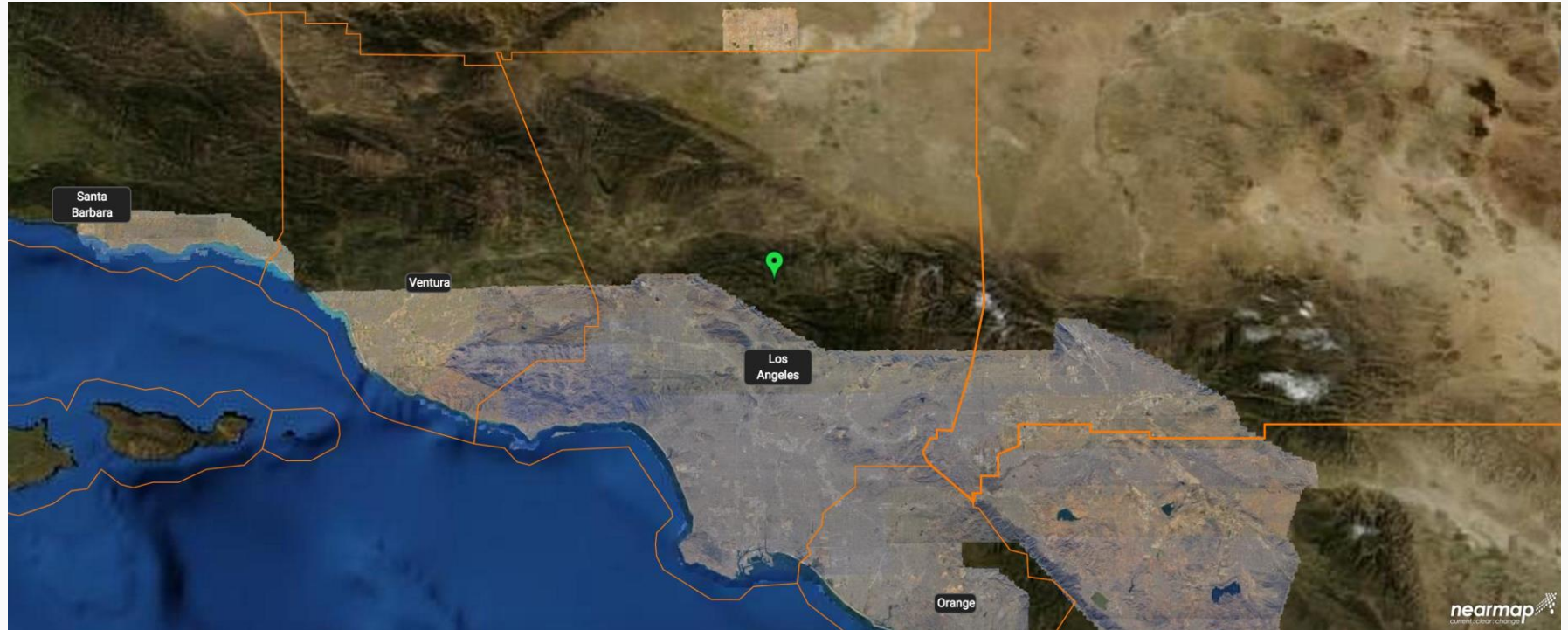
patented technology/software

Piloted fixed-winged aircraft

Orthoimagery for a defined area

Orthoimagery on demand

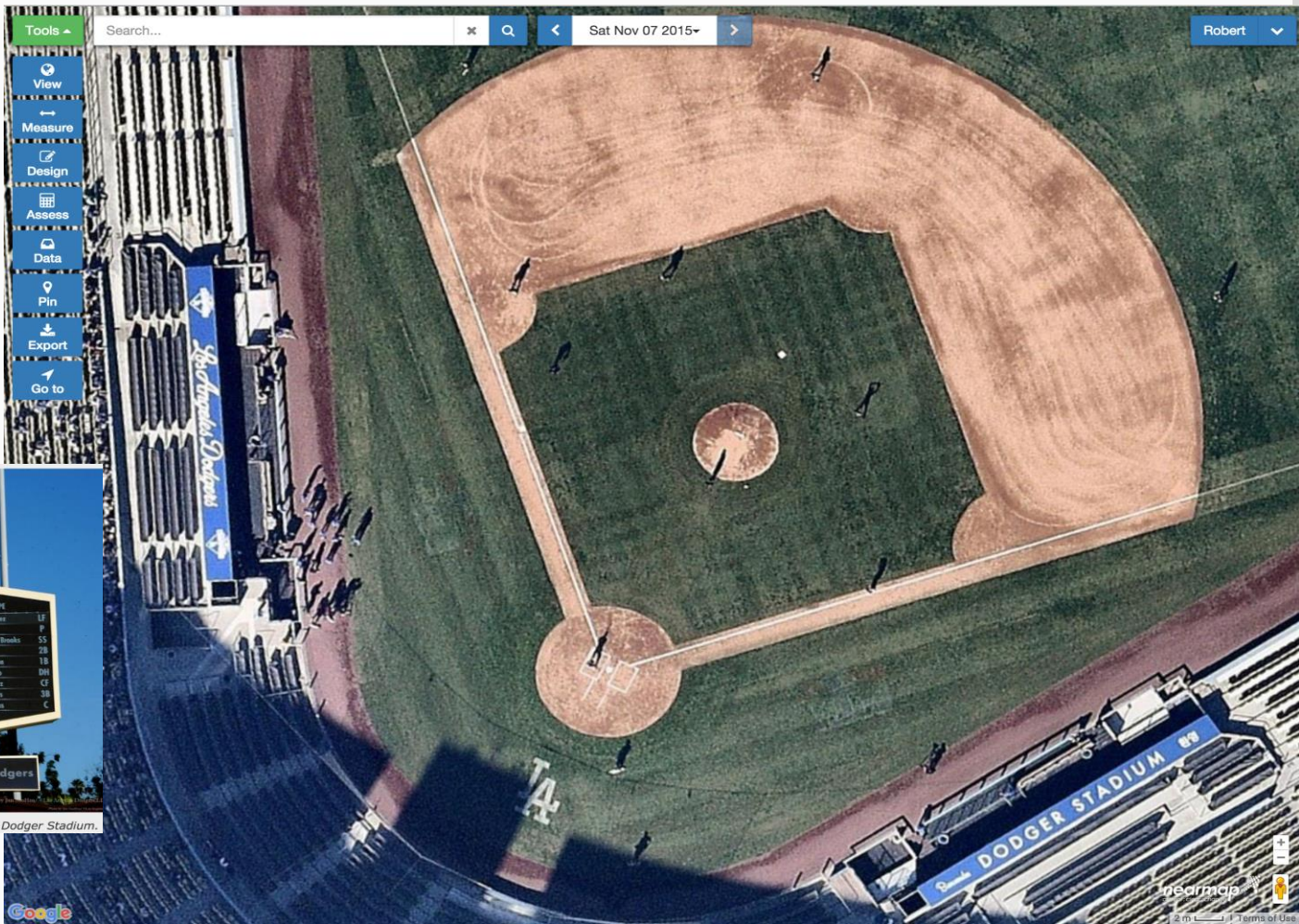
LA County Coverage



What makes nearmap different?

Current

Frequent captures and online within days of survey.



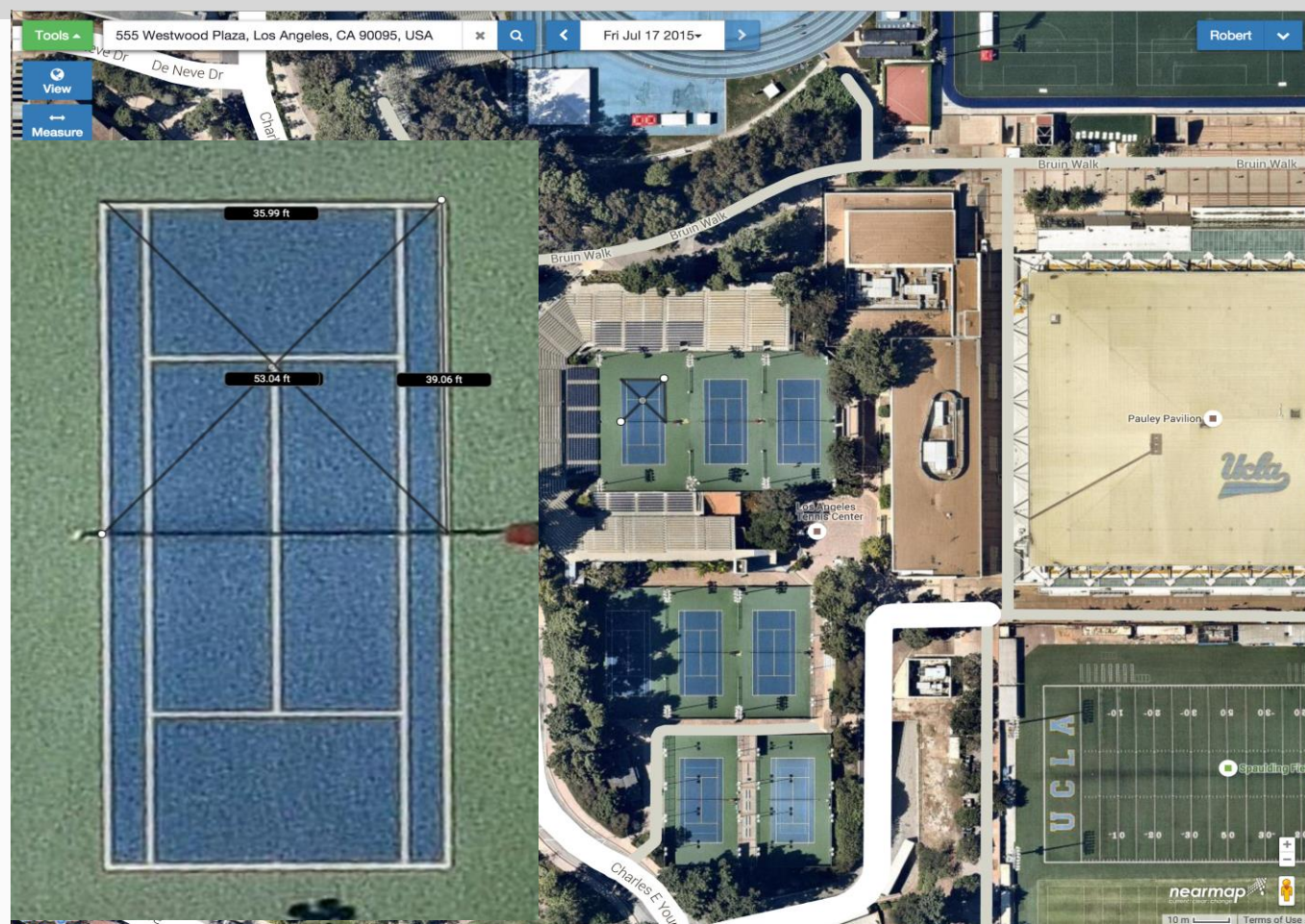
Adrian Gonzalez's Bat4Hope Softball Game Saturday, November 7, 2015 at Dodger Stadium.

Clear

2.9" GSD

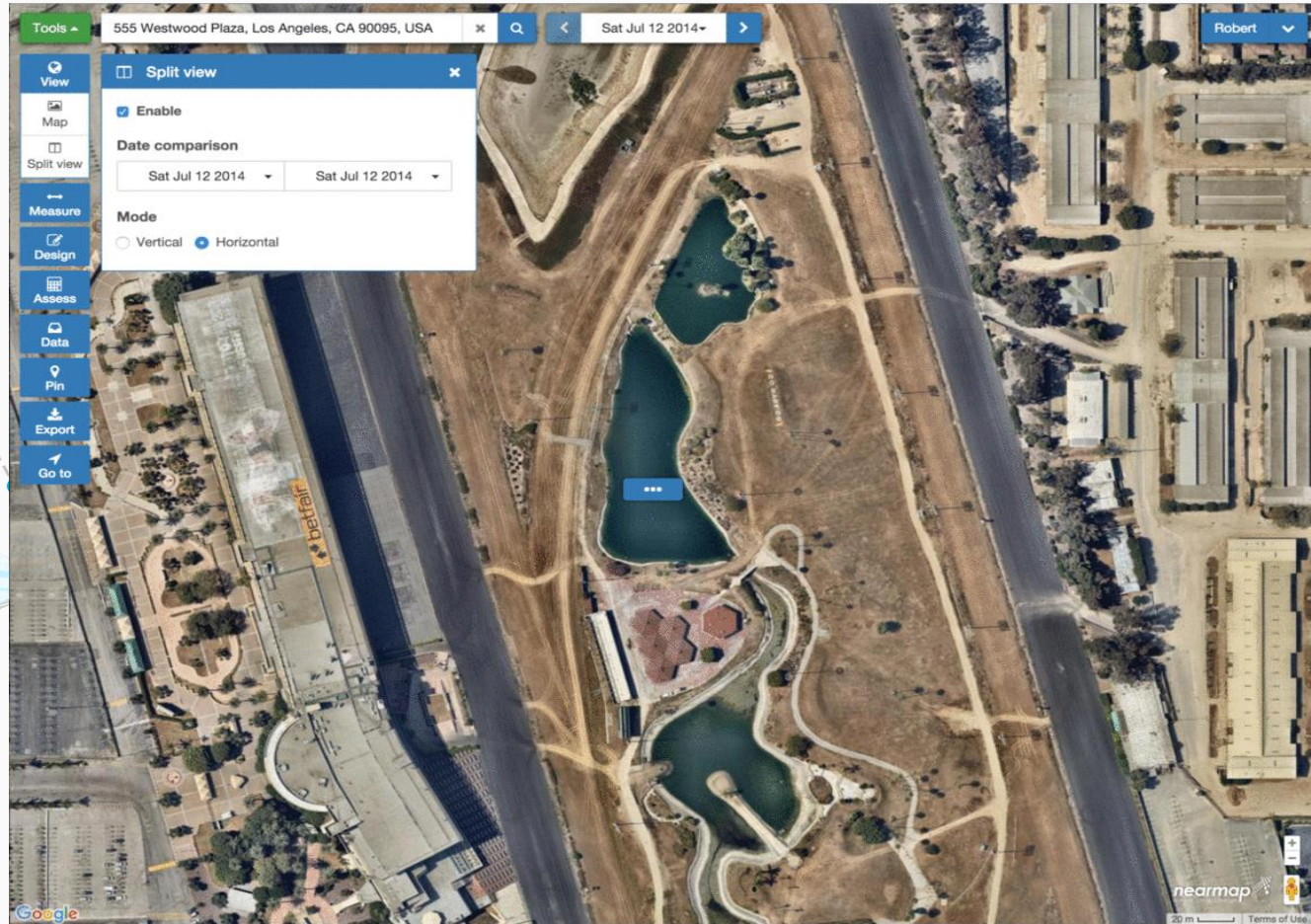
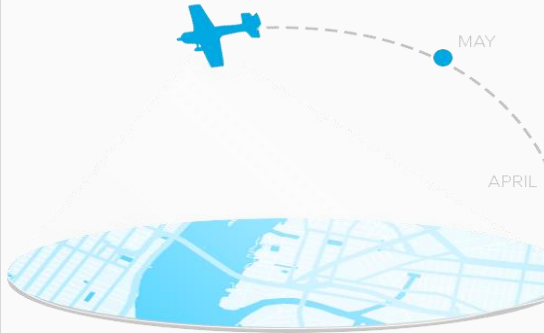
Absolute Horizontal
Accuracy 2'6" RMSE

Measurements +/- 6"



Change

Areas surveyed 3-6 times per year



nearmap demo

nearmap integration points

ArcGIS Desktop and ArcGIS Online Plugin



API Access - WMS, TMS, WMTS and KML

The screenshot shows the 'Los Angeles County GIS Data Portal' website. The header includes the 'eGIS' logo and the text 'Los Angeles County GIS Data Portal' and 'GIS Data for LA County'. There is a search bar for GIS Data. The main content area has a 'Welcome' message from the Geographic Information Officer, Mark Greninger, and lists 'Recent Releases' and 'Popular Data'. The 'Recent Releases' section lists several census tracts and places for January 26, 2018. The 'Popular Data' section lists 'GIS Data Viewers', 'City Boundaries and Amen...', 'Interactive Map', and 'Probaton Sites'. There are also logos for the County of Los Angeles and the eGIS logo.

What's included?

Internal use

nearmap MapBrowser

nearmap API and Esri integrations

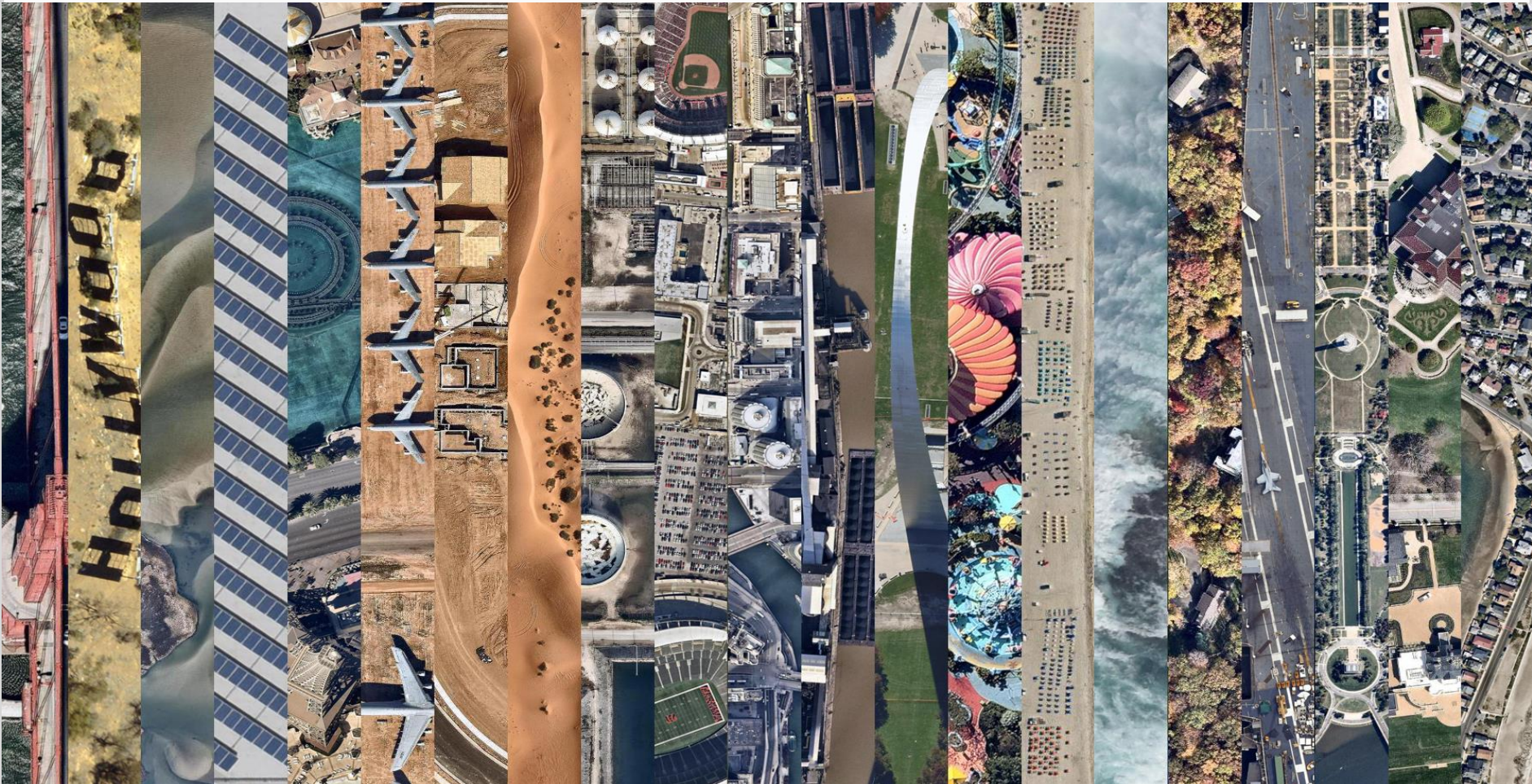
Unlimited number of users

Unlimited data

Ability to print maps

LARIAC Proposal

10% of LARIAC4 annually



Questions