

Spatial / GIS Resources Brown Bag Discussion: Metro LAR-IAC4 Pictometry Tool

M. Quant

Rail Operations Strategic Planning

8/18/2015



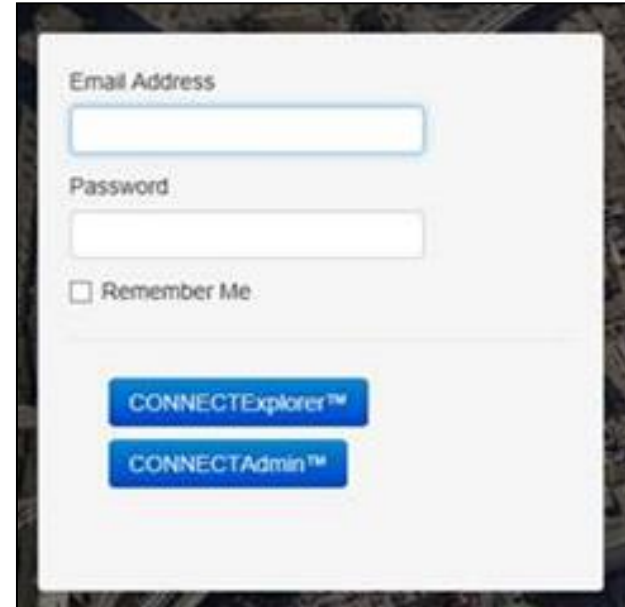
Metro

Agenda

- Metro LAR-IAC4 Pictometry Interface & Tools
- Additional Metro LAR-IAC4 Pictometry Interface
- Discussion / Next Steps
- Samples
- LA County Resources - Mapping Viewers & Data
- Miscellaneous Tools & Tips

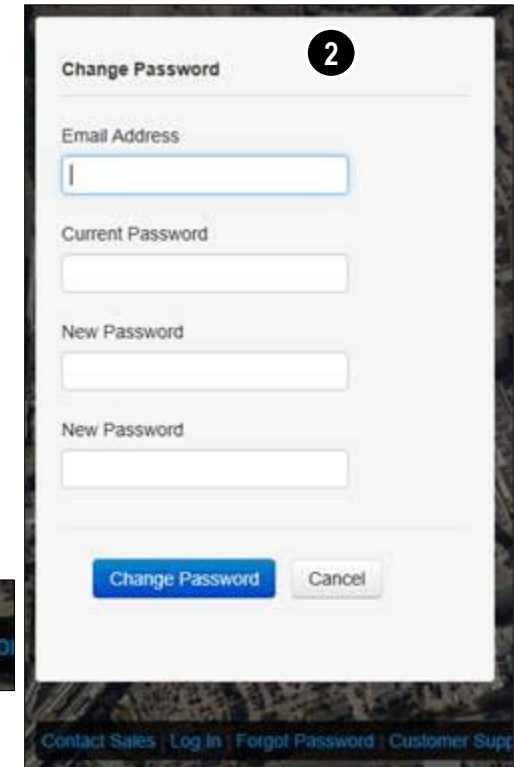
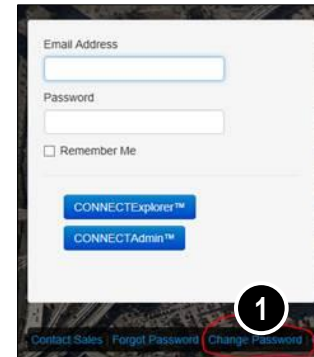
Metro LAR-IAC4 Pictometry: Log In Screen

- Log in
 - <https://pol.pictometry.com/explorer/log in.php>
- Log in Pictometry Spinner

A screenshot of the Pictometry log in screen. It features a white background with a dark border. At the top, there are two input fields: "Email Address" and "Password". Below the "Password" field is a checkbox labeled "Remember Me". At the bottom, there are two blue buttons: "CONNECTExplorer™" and "CONNECTAdmin™".

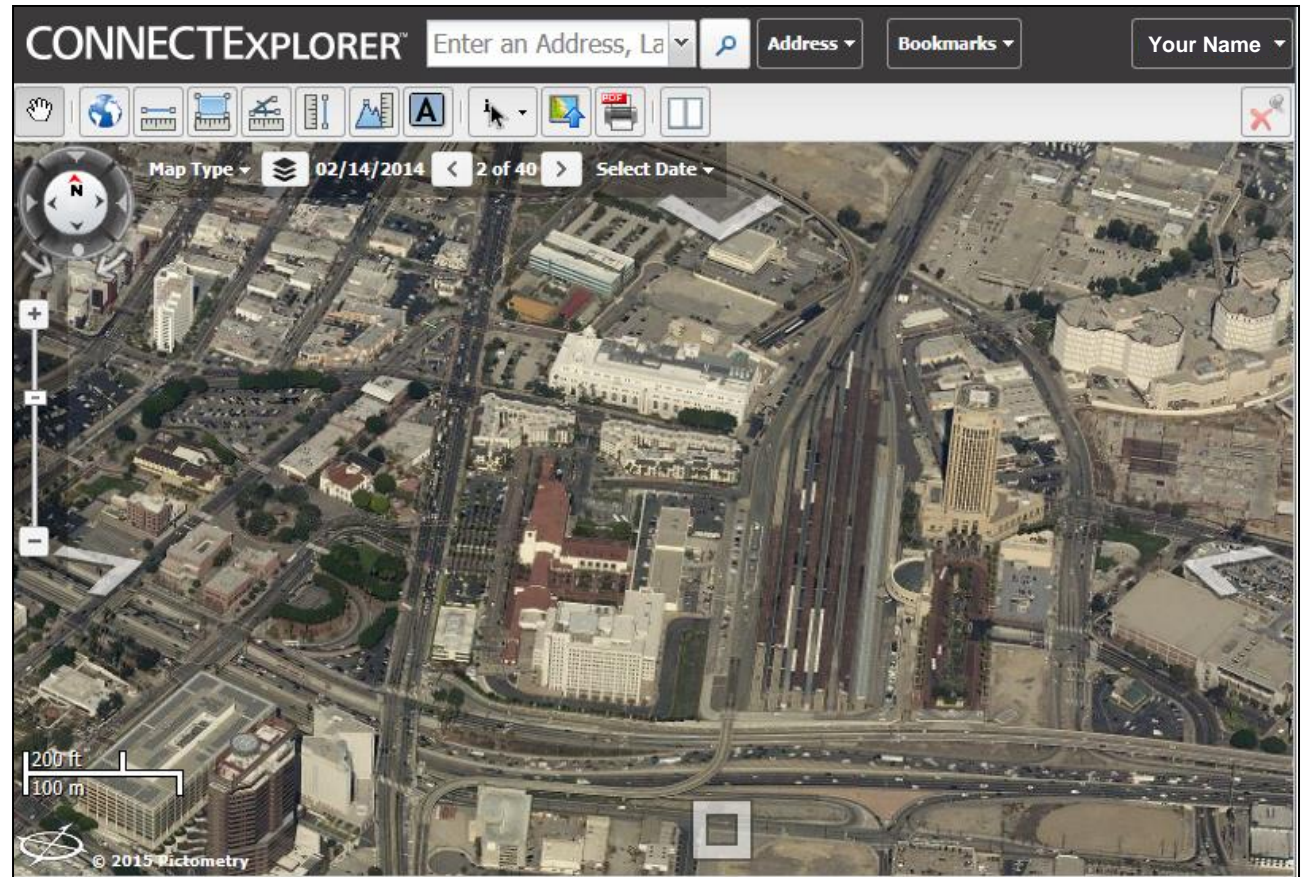
Pictometry: Change Password

1. Click on **Change Password** blue link
2. In change password screen enter all information and click **Change Password** button
 - a) Email Address: current Metro email address
 - b) Current Password: (*****)
 - c) New Password: (*****)
(Note: Your password must contain at least one capital, one lower case, and one digit. It must be between 6 and 20 characters long.)
 - d) New Password: (confirm your new password)
 - e) click **Change Password** button
3. Password Changed dialog will appear!
4. Click **Log In** link at bottom of screen to log in with new password
5. Log in using your **NEW PASSWORD** and click **CONNECTExplorer** button
6. Log in spinner...



Interface Window

- Pictometry Image Types
- Viewing Image Types
- Navigating Images
- Finding Images
- Measurement Tools
- Viewing Layers & Identifying Data
- Printing & Exporting Images



Pictometry Image Types

- Types

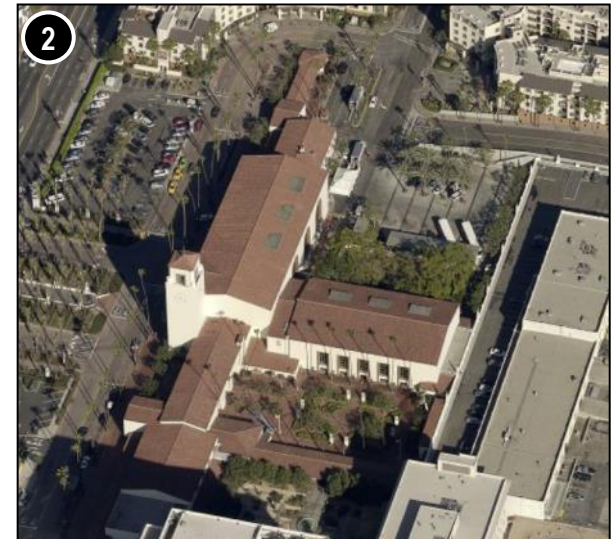
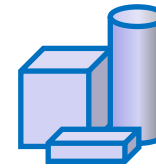
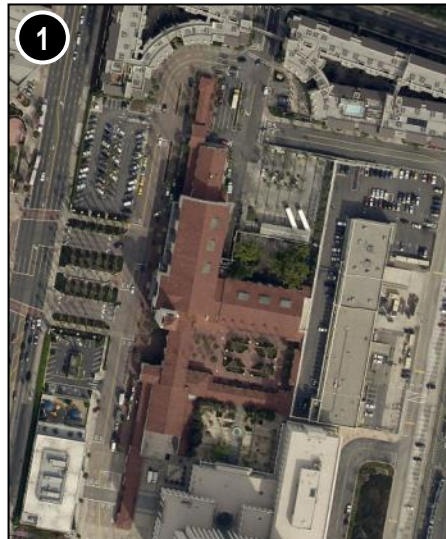
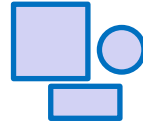
1. Orthogonal

- top down or
- plan view

2. Oblique (45 degree)

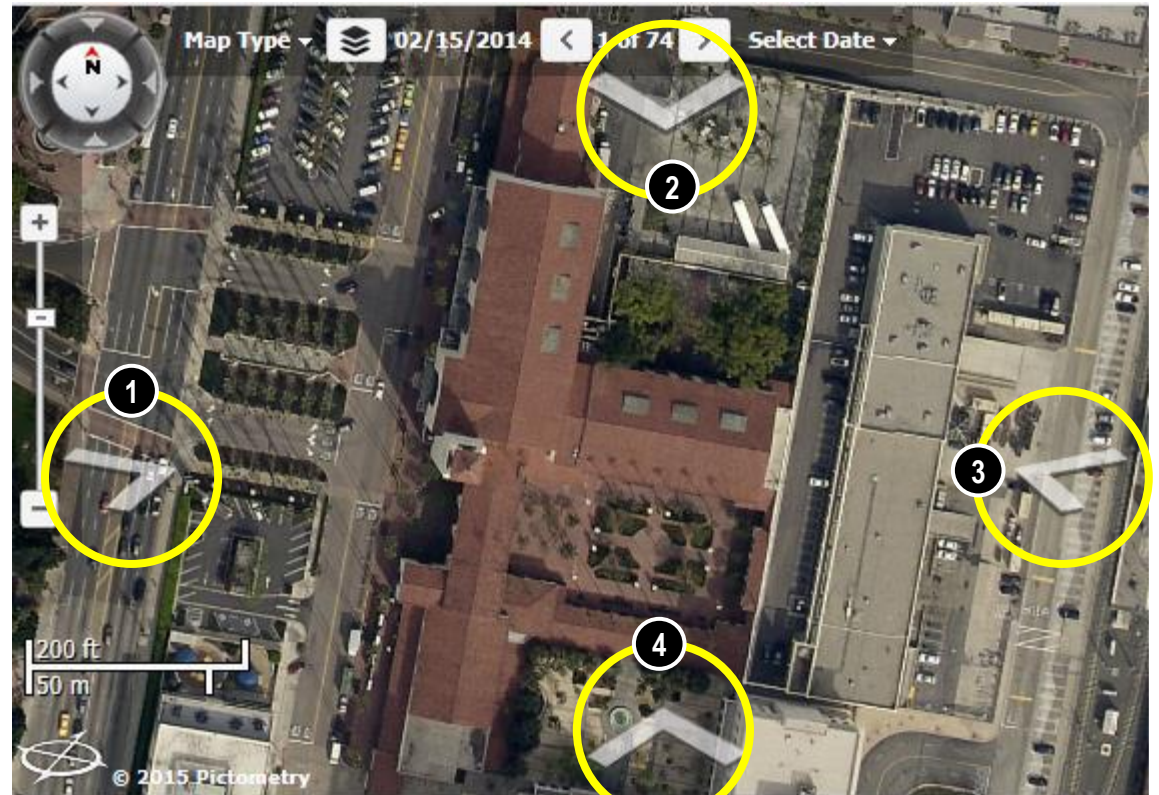
- Image Levels (zoom slider)

- Neighborhood
- Community



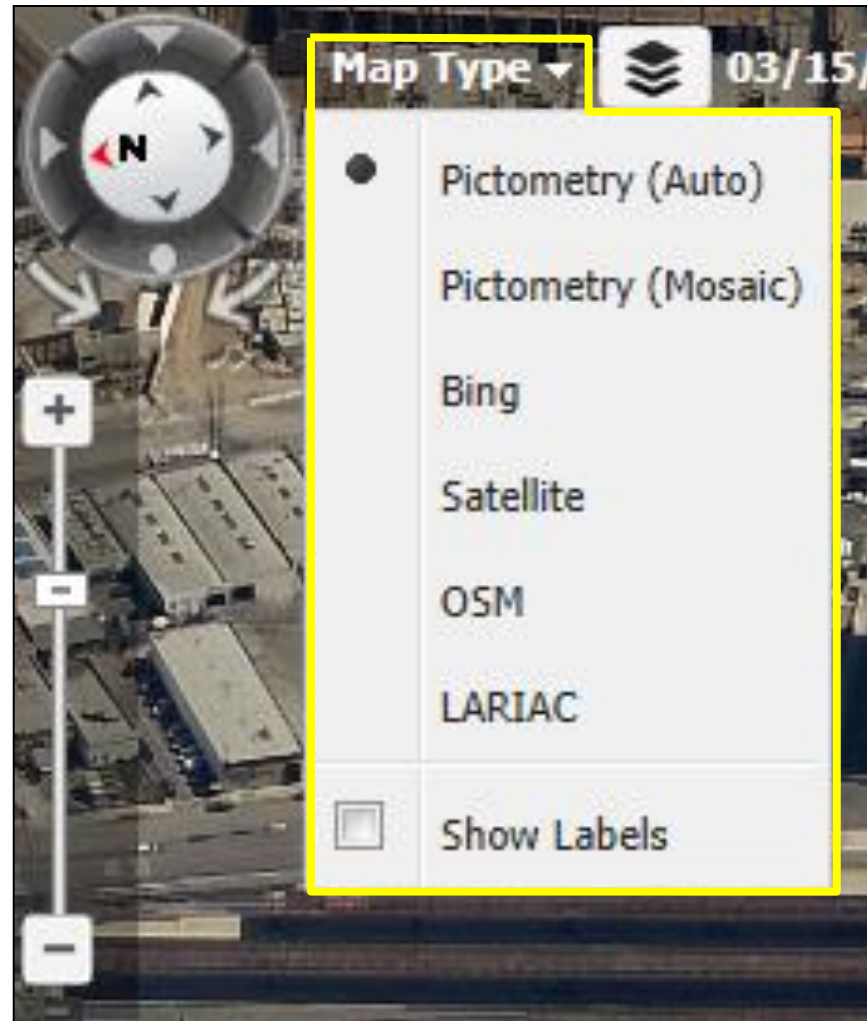
Viewing Image Views

- View Buttons
 1. from West -> East
 2. from North -> South
 3. from East -> West
 4. from South -> North
 5. from Ortho
- Image date
- Select date
- Rotate direction
 - clockwise
 - counter clockwise
 - click on direction



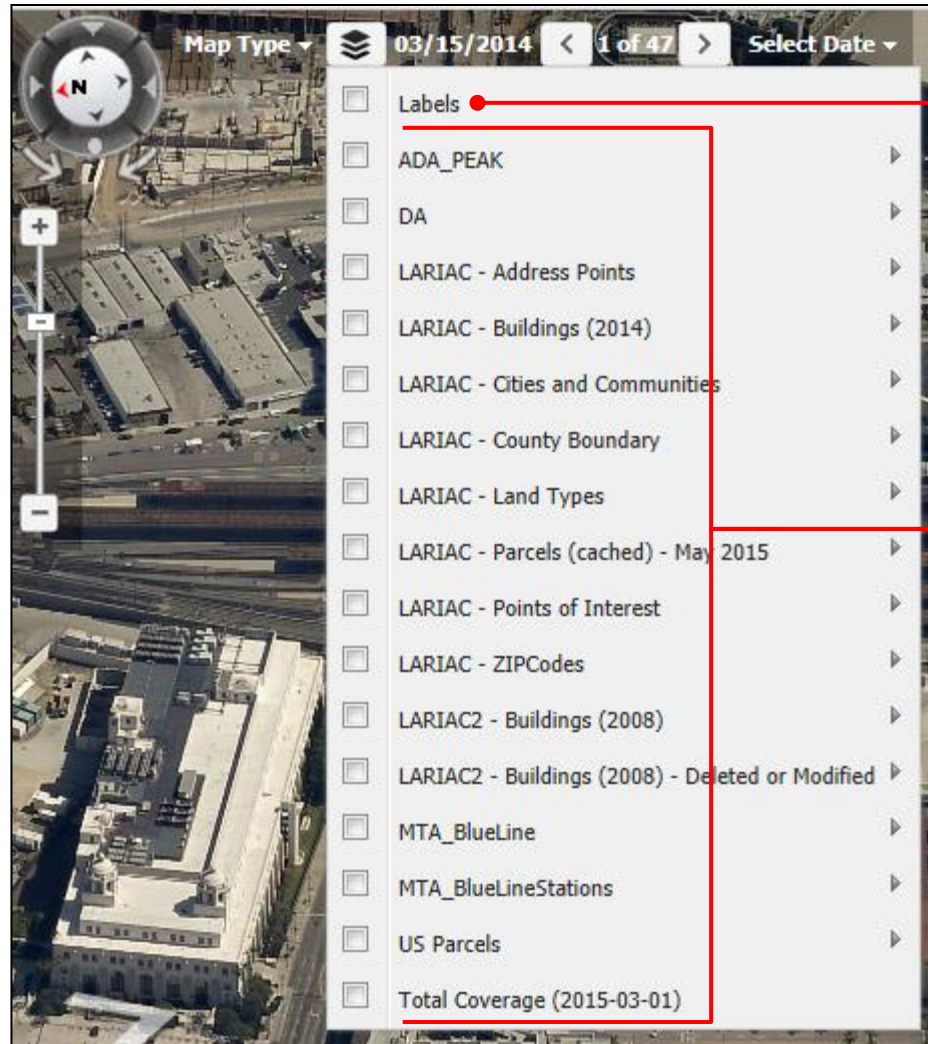
Map Type Menu

1. Pictometry (Auto)
2. Pictometry (Mosaic)
3. Bing (Road)
4. Satellite
5. OSM
6. LARIAC
7. Show Labels



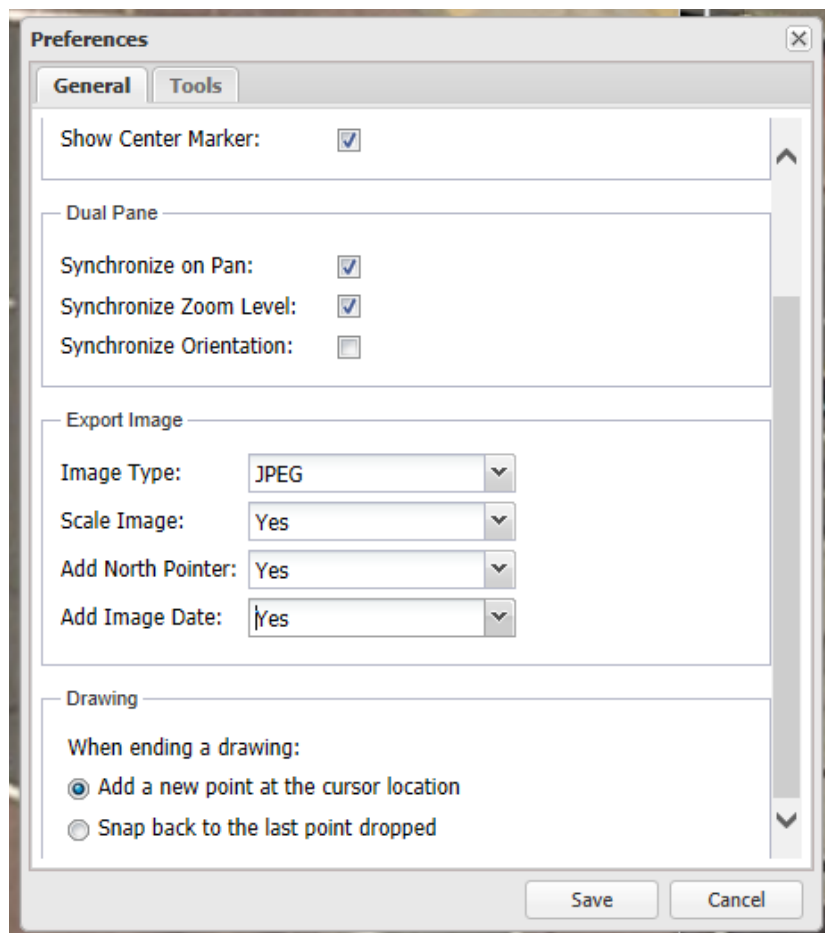
Layers Menu

1. Labels
2. Layer groups
 - LARIAC
 - Metro
 - Other

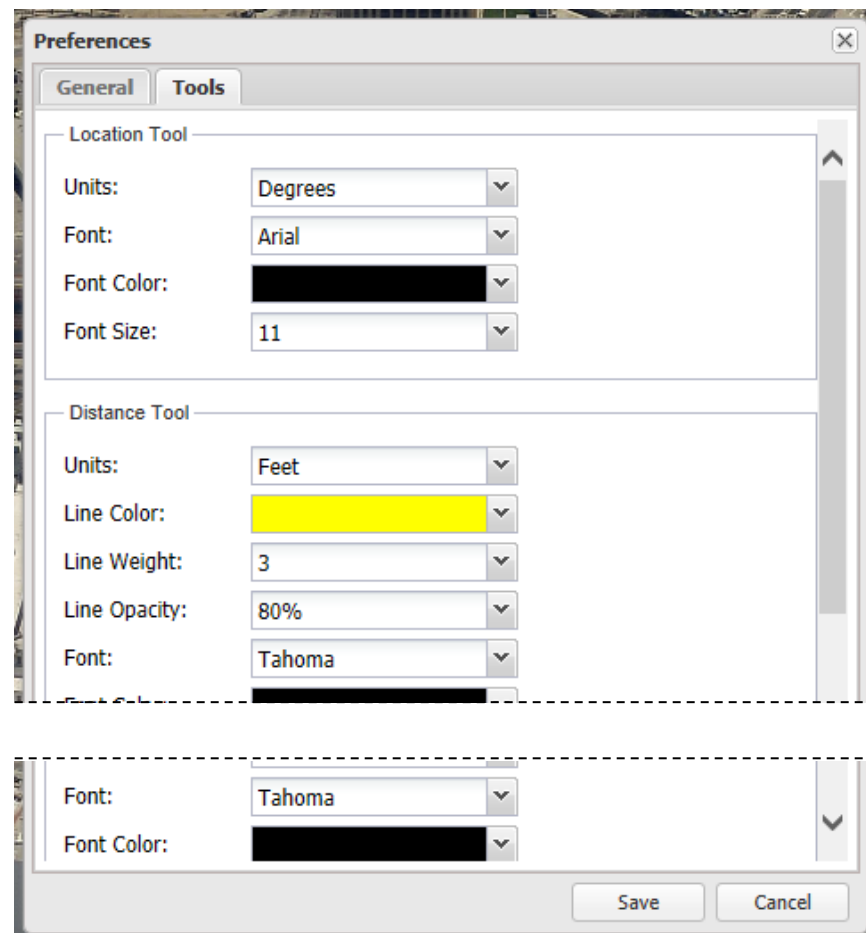


Pictometry: Preferences Window

- General Tab

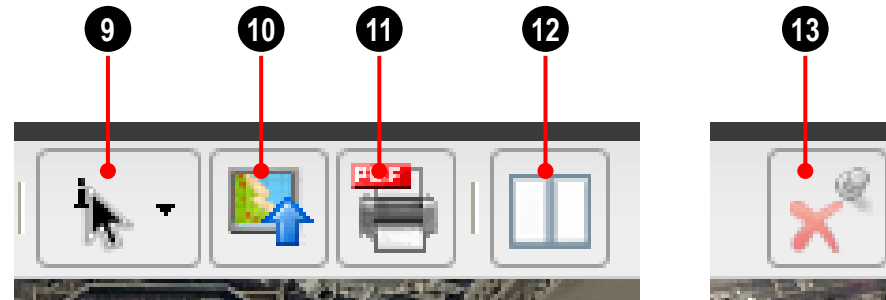
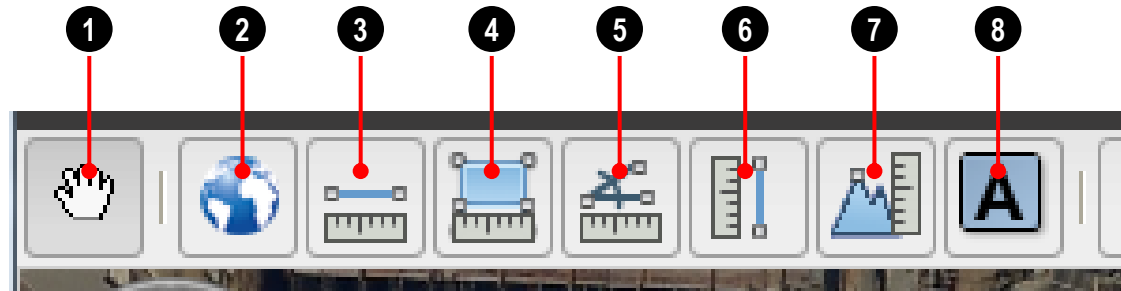


- Tools Tab



Tool Bar

1. Move display
 2. Location
 3. Distance
 4. Area
 5. Bearing / Angle
 6. Height
 7. Elevation
 8. Text
 9. Identify Tool
 10. Export Image
 11. Print from PDF
 12. Dual Pane
 13. Unpin All
- Permanent Annotations



Additional Metro LAR-IAC Pictometry Interface

LA County GIS Viewer

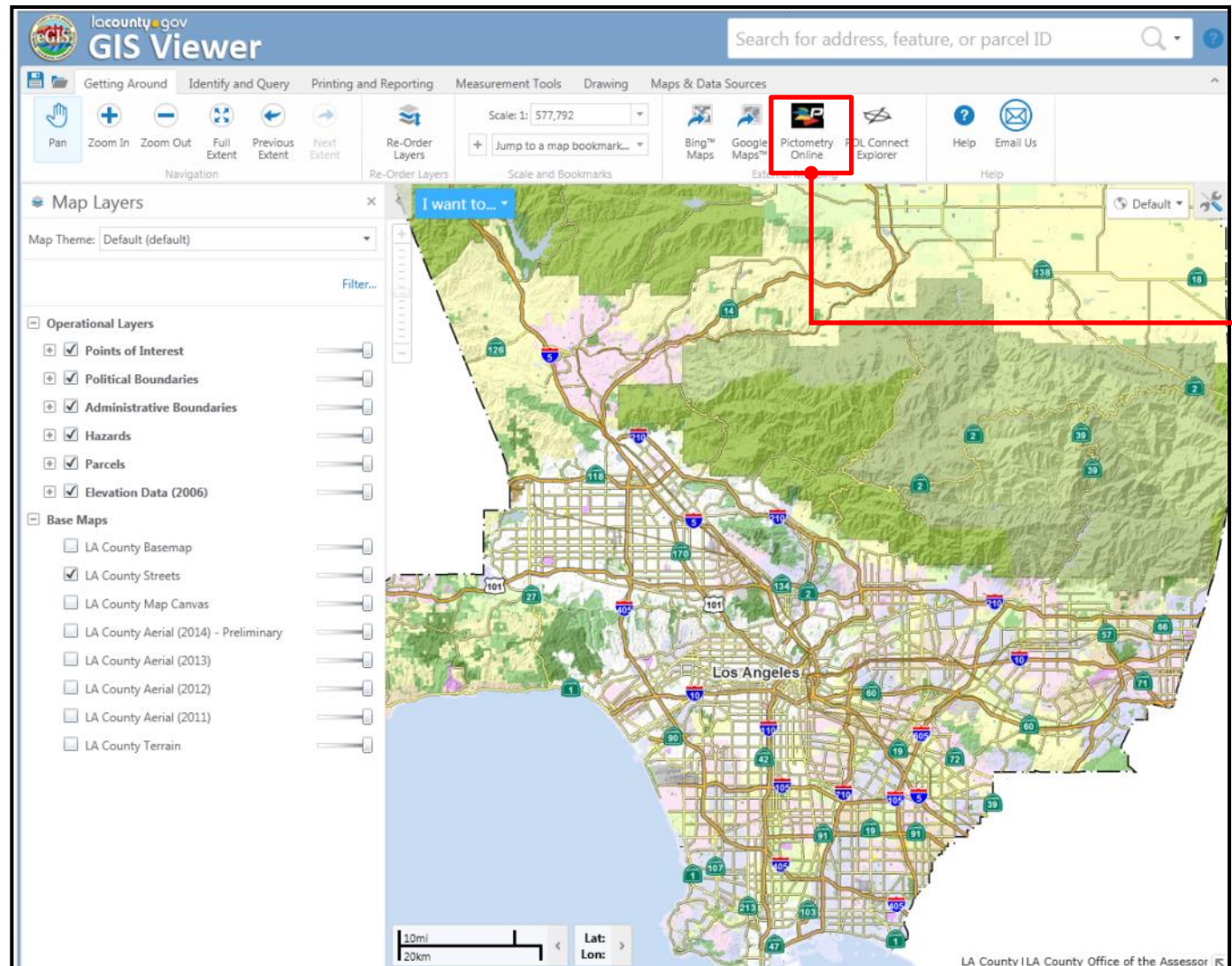
<http://egis3.lacounty.gov/eGIS/gis-mapping-applications/gisviewer/>



Metro

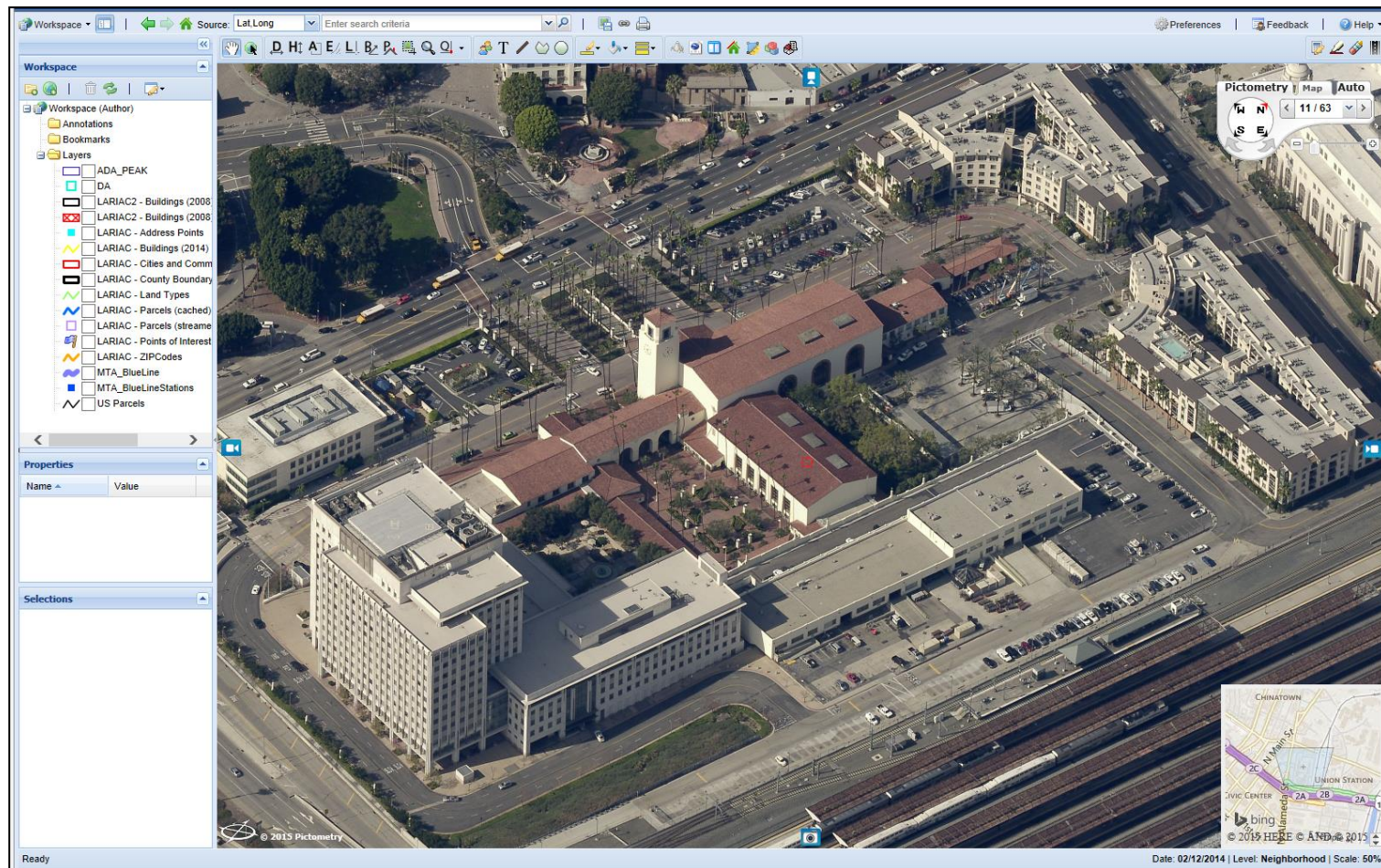
Access using: LA County GIS Viewer Public (2014)

- Navigation
- Map Types
 - Map (multiple)
 - Satellite
 - Top View
 - Oblique (Pictometry Online user ID required)
- Pre-loaded layers, (LA County data)
- Basemaps
 - Street
 - Aerial 2011 - 2014 (preliminary)
- Tools
 - Standard
 - Advanced



Additional Pictometry Interface

- Navigation
- Map Types
 - Street
 - Satellite
 - Top View
 - Oblique (multiple points)
- Layers
 - LA County LARIAC data
 - Metro Layers
- Dual Pane
- Tools
 - Standard
 - Advanced
- Workspace
 - Save multiple workspace



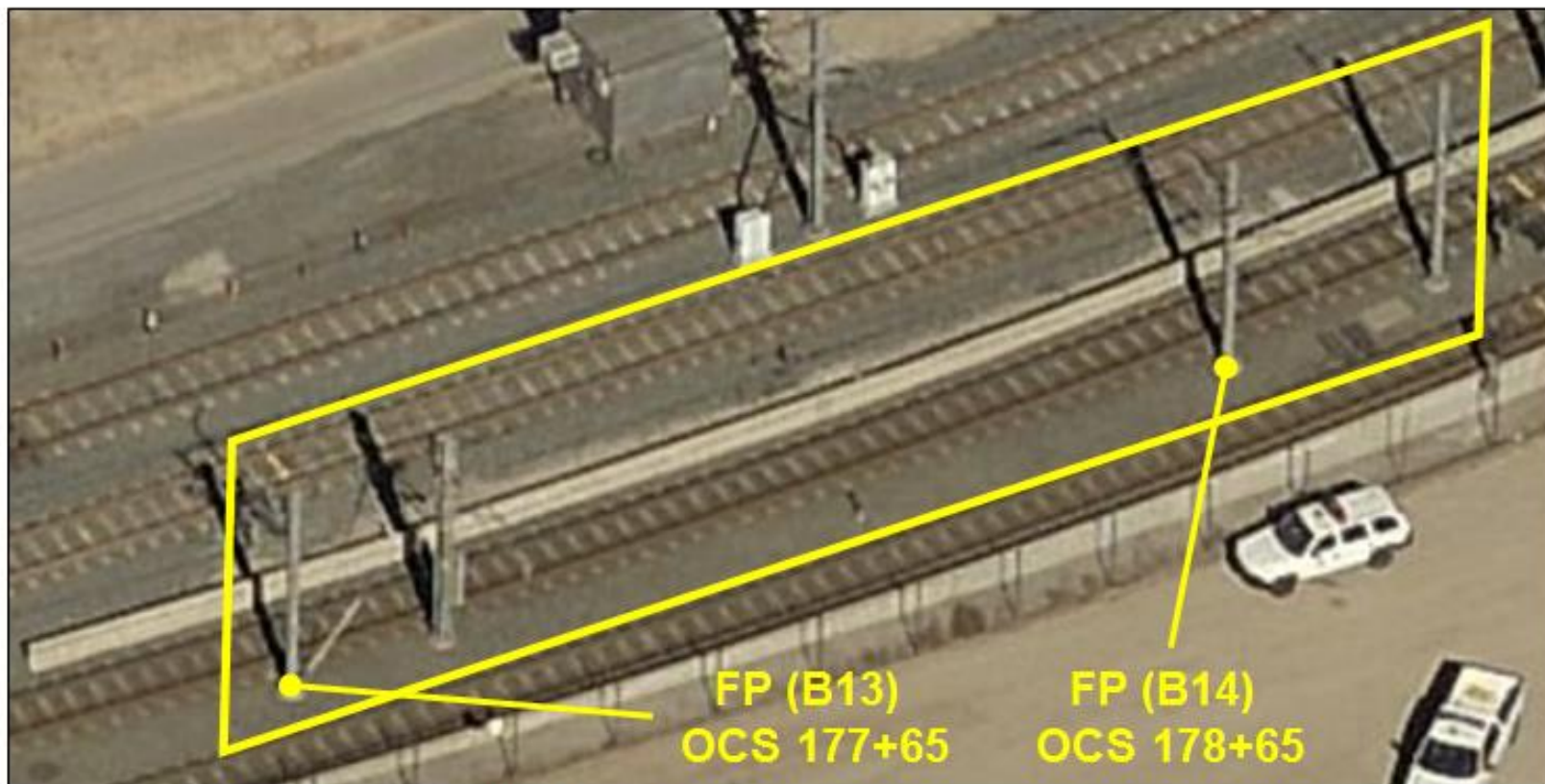
Samples

Metro Project Usage



Metro

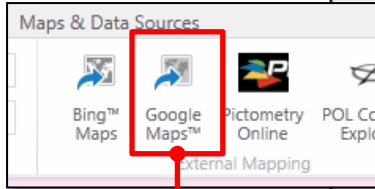
Sample: Gold Line Traction Power Track Feeder Poles LA County LARIAC4 2014 aerial



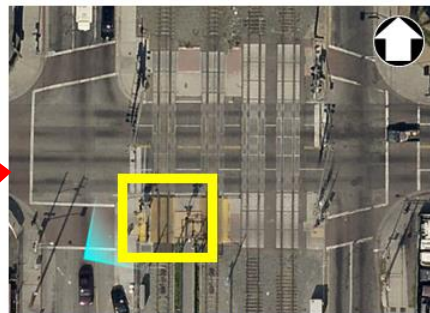
Source: Los Angeles County (LAR-IAC4 2/2014)

Sample: LA County GIS Viewer LARIAC4 2014 using Google Map link tool

Blue Line Vernon Ave - Street View (Eastbound)



1. Crossing gate
2. Pedestrian gate
3. Emergency swing gate
4. Pedestrian on-coming train sign



Source: LA County LARIAC4 2014



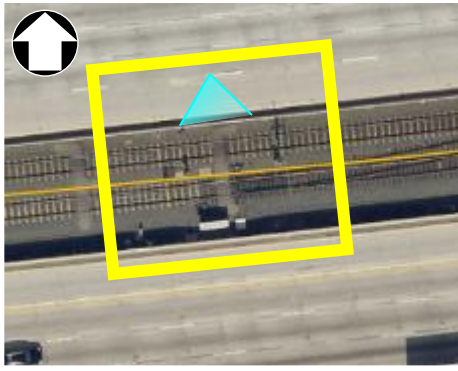
Source: Google Maps Street View 2/2014



Green Line I-105: Harbor Freeway Station / I-105 / I-110 Freeway Interchange



Gold Line I-210: Train & Freeway Comparison



Source:
LA County
LARIAC4 2014

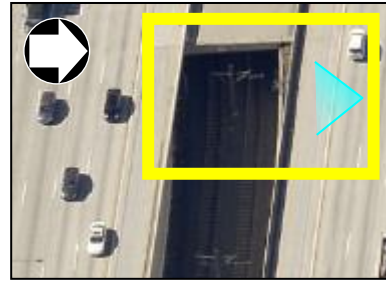


Source: Google Maps 2015



Gold Line I-210: Marengo Box North Portal Below-Grade

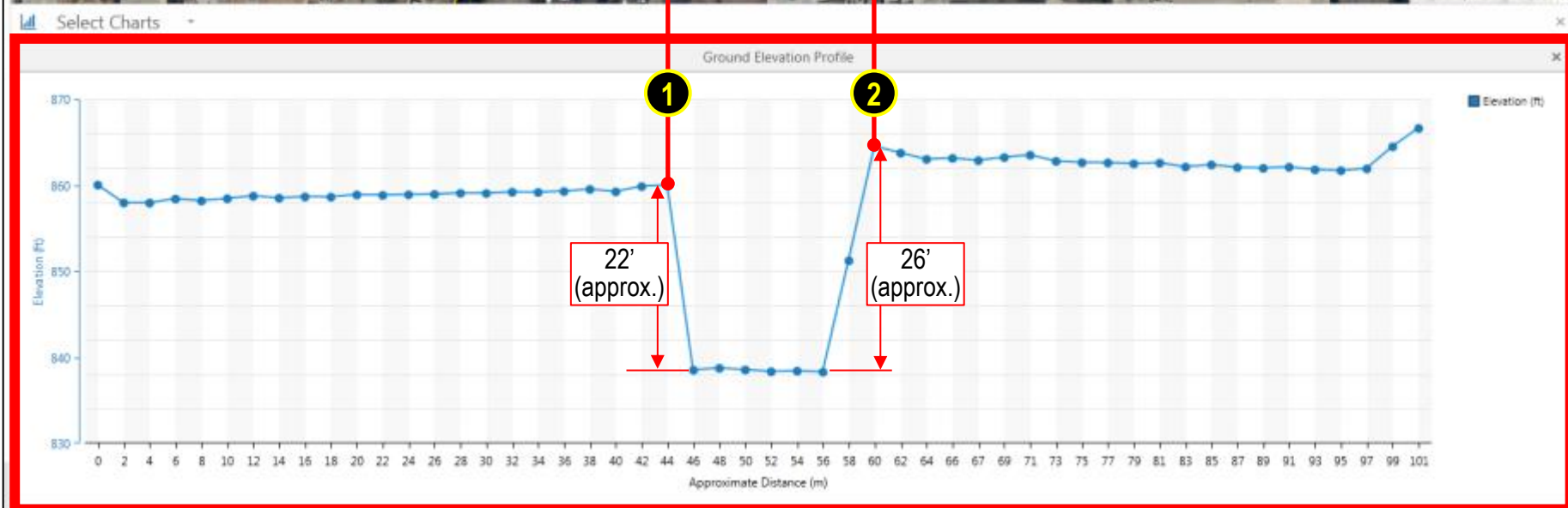
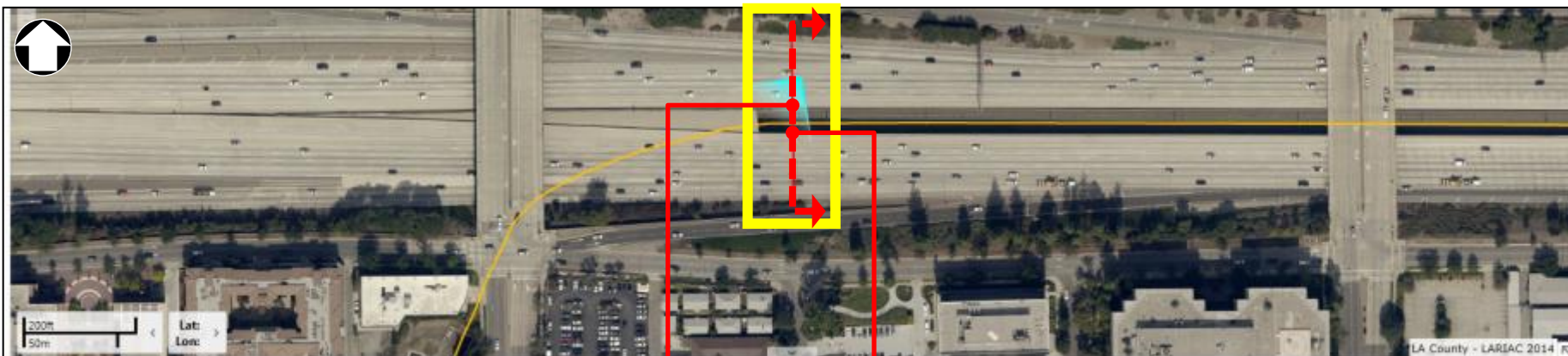
Source: LA County LARIAC4 2014



Source: Google Maps 7/2015

Gold Line I-210: Profile

Marengo Box North Portal Profile

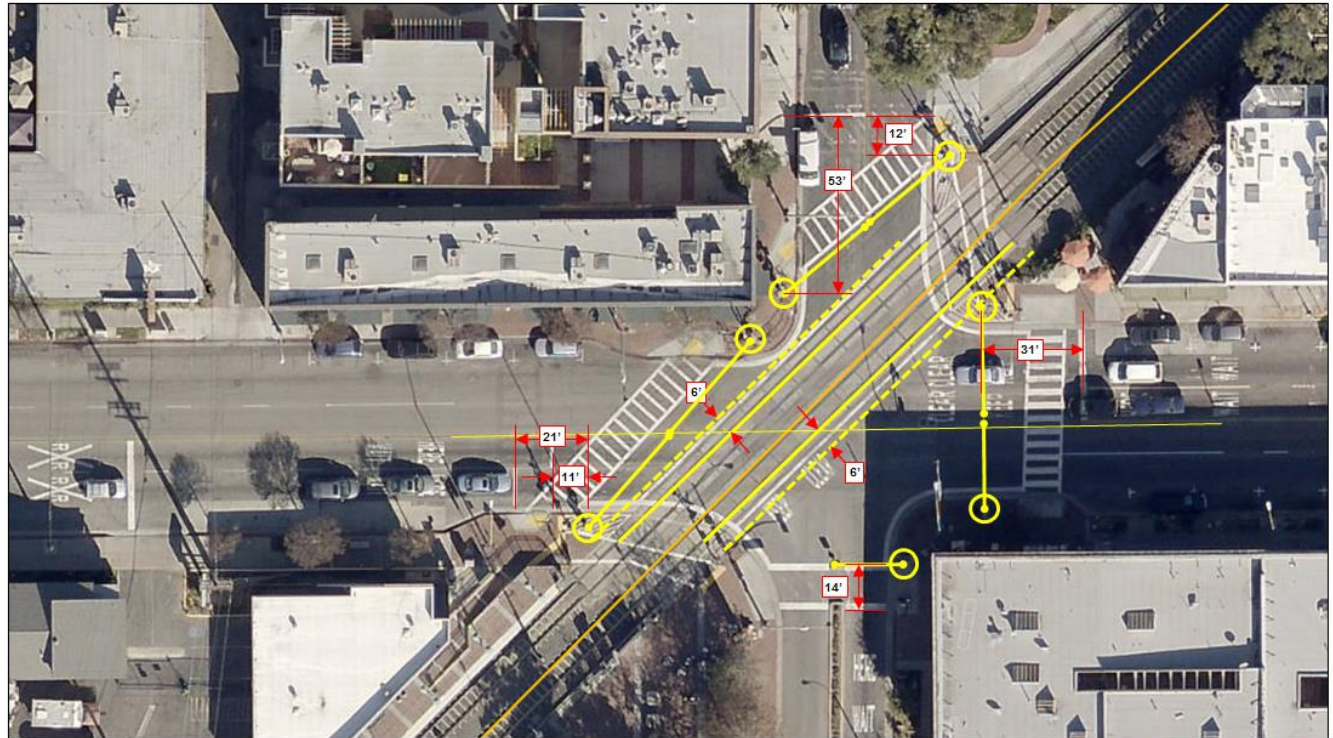


Source: LA County LARIAC4 2014



Sample: Gold Line Traffic Grade Crossing & LA County LARIAC4 2014 aerial

Gold Line Mission St / Meridian Ave Streets Measurements



Source: LA County LARIAC4 2014



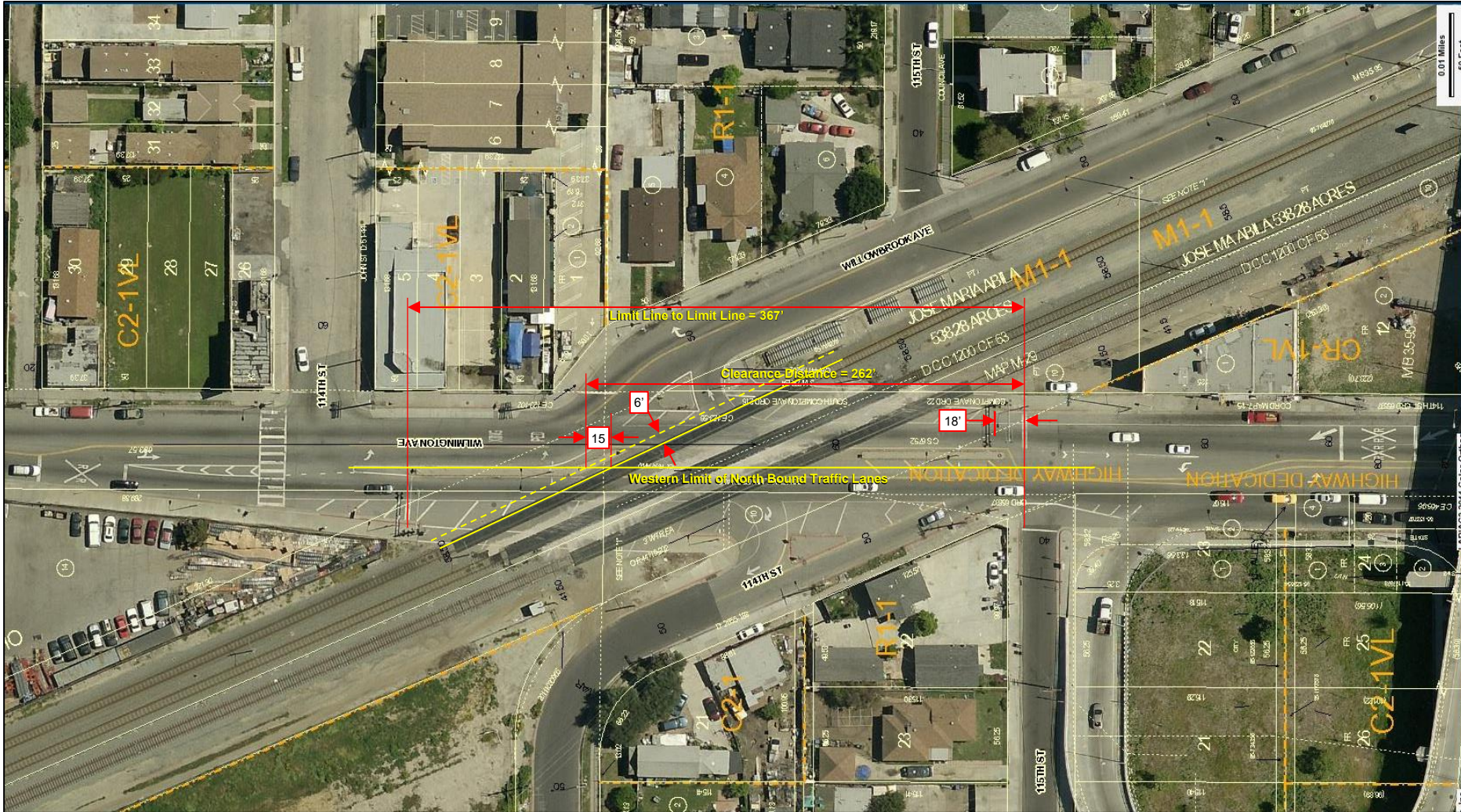
Metro

Feet
(approx.)



Metro

Blue Line Wilmington Ave - Traffic Dimensions North Bound - Aerial View

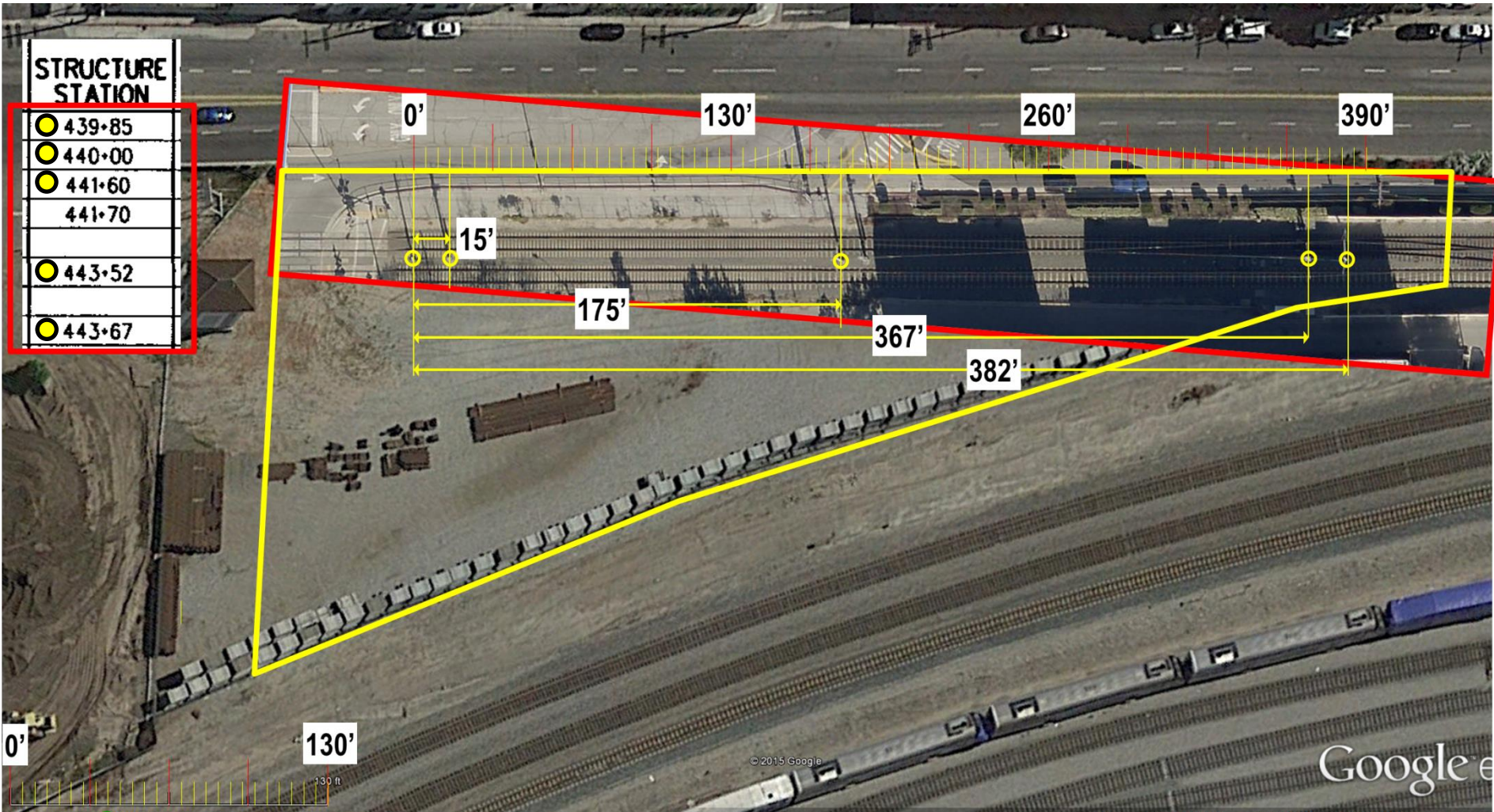


Metro

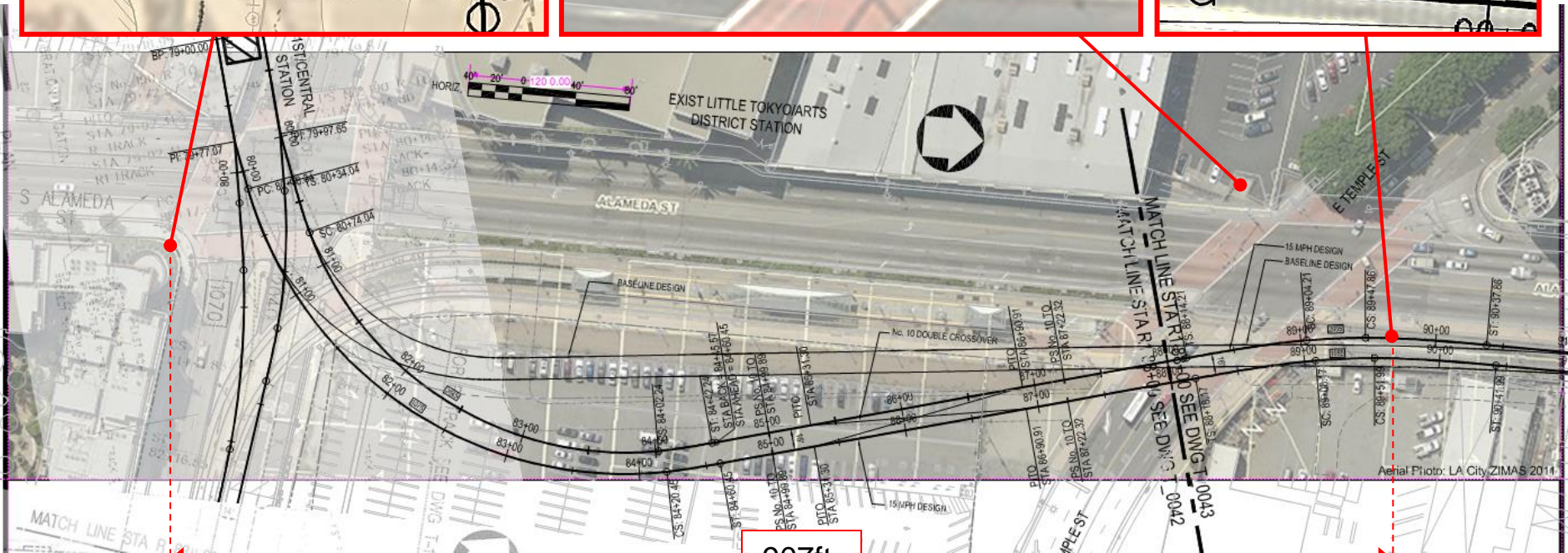
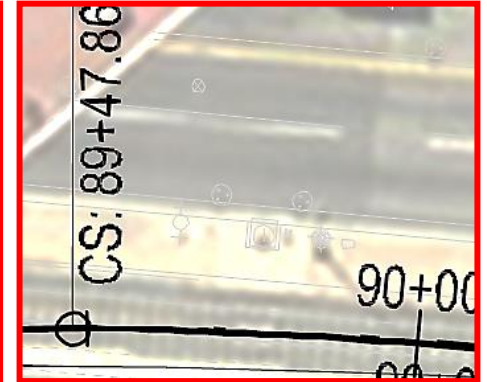
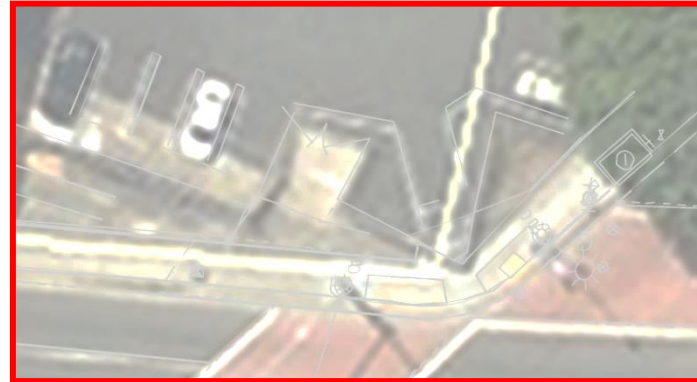


Source: LA City ZIMAS LARIAC3 2011

Combined Yard & Track



Sample: LA City ZIMAS (LARIAC3 2011) aerial basemap & Engr. Dwg. Design overlay



907ft.

(overlay alignment within 2ft.)



Discussion / Next Steps



Metro

Mapping Viewers & Data

LA County Resources

- LA County LAR-IAC Project Ref - Background / Meetings & Presentations:
 - <http://egis3.lacounty.gov/dataportal/lariac/>
 - <http://egis3.lacounty.gov/dataportal/lariac/lariac4-meetings-presentations/>
- Map Viewers
 - GIS Viewer
<http://egis3.lacounty.gov/eGIS/gis-mapping-applications/gisviewer/>
 - GIS-NET3
http://gis.planning.lacounty.gov/GIS-NET3_Public/Viewer.html
- Data
 - GIS Data Portal
<http://egis3.lacounty.gov/dataportal>

LA City Resources

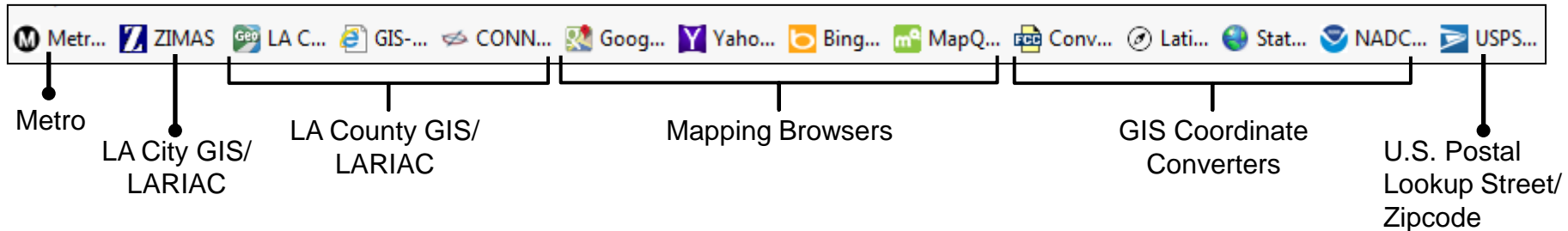
- Map Viewer
 - LA City ZIMAS (<http://www.zimas.lacity.org/>)

Other Mapping Viewers

- See LA County Data Portal
<http://egis3.lacounty.gov/dataportal/gis-data-viewers/>

Miscellaneous Tools / Tips

- **Save time** - configure your **Internet Browser Toolbar** with **YOUR** favorites



- **Additional PDF Support**
 - If you only have Acrobat Reader then check for internal software alternatives (eCopy, Nova PDF, others)
 - Available thru Metro IT software list
 - Tools for converting PDFs to text (OCR)
 - Inserting PDF pages
 - Extracting PDF pages
- Document software issues for tech support
 - Issues vary based on user usage scenarios
- Others?