

LARIAC 7: Kick-off

Everything EagleView

District Manager:
Arjun Cardoza

Agenda:

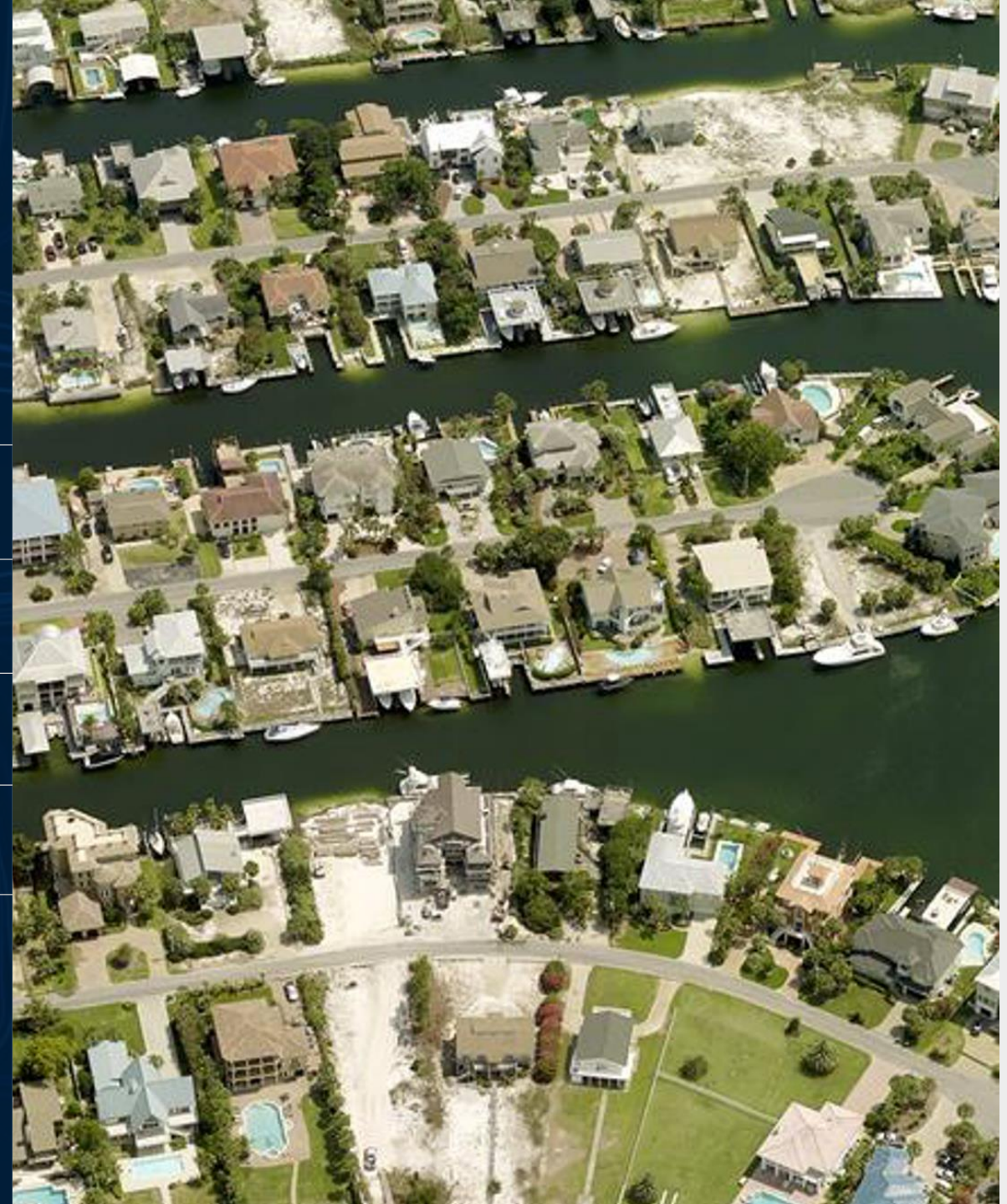
1 Introduction & Taos Imagery History

2 Background of LARIAC and EV

3 Who we are

4 Everything Eagleview

5 Solutions, EV Cloud and AI/ML



Background of Eagleview & LARIAC



Vendor to LARIAC since early 2000's for LARIAC2



Assist LARIAC by providing imagery and support to approximately 55+ Cities, Local/State/Federal Agencies, and Educational Institutions



Five LARIAC imagery projects completed, wrapping up our 6th project: LARIAC7

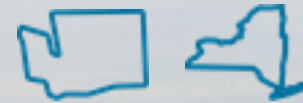
About EagleView



Aerial imagery,
software & analytics



1,000+
employees



Headquarters:
Bellevue, WA
Rochester, NY



Formerly named
Pictometry

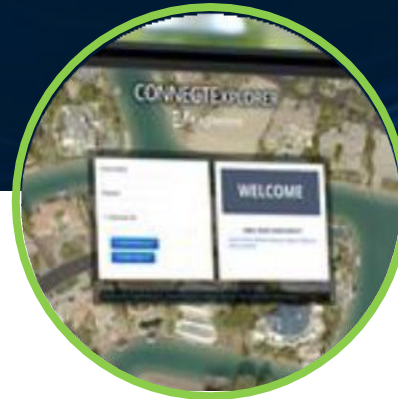


Founded in
1998

EagleView: Total Integrated Solution



**Oblique
Imagery**



**Easy-to-Use
Software**



**Integration With
Popular
Applications**

An Industry Leader

- ❖ **300+ patents** for cameras, sensors and technology
- ❖ Imagery covering **94% of the U.S. population**
- ❖ **90% customer retention rate**
- ❖ **Certified GISPs** on our team
- ❖ **Over 1 billion images** in our database

Everything EagleView:

Software, Solutions, & What's New





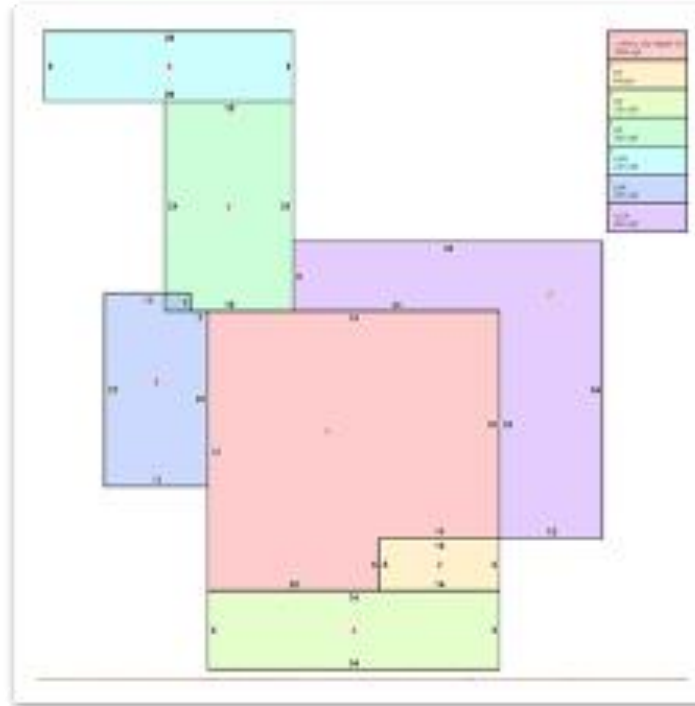
Change Detection using ChangeFinder

Compares imagery to detect parcel change and allows assessment teams to review and validate the information from the desktop, reducing the amount of travel and field time. Meets IAAO standards.

Building Outline



Property Sketch

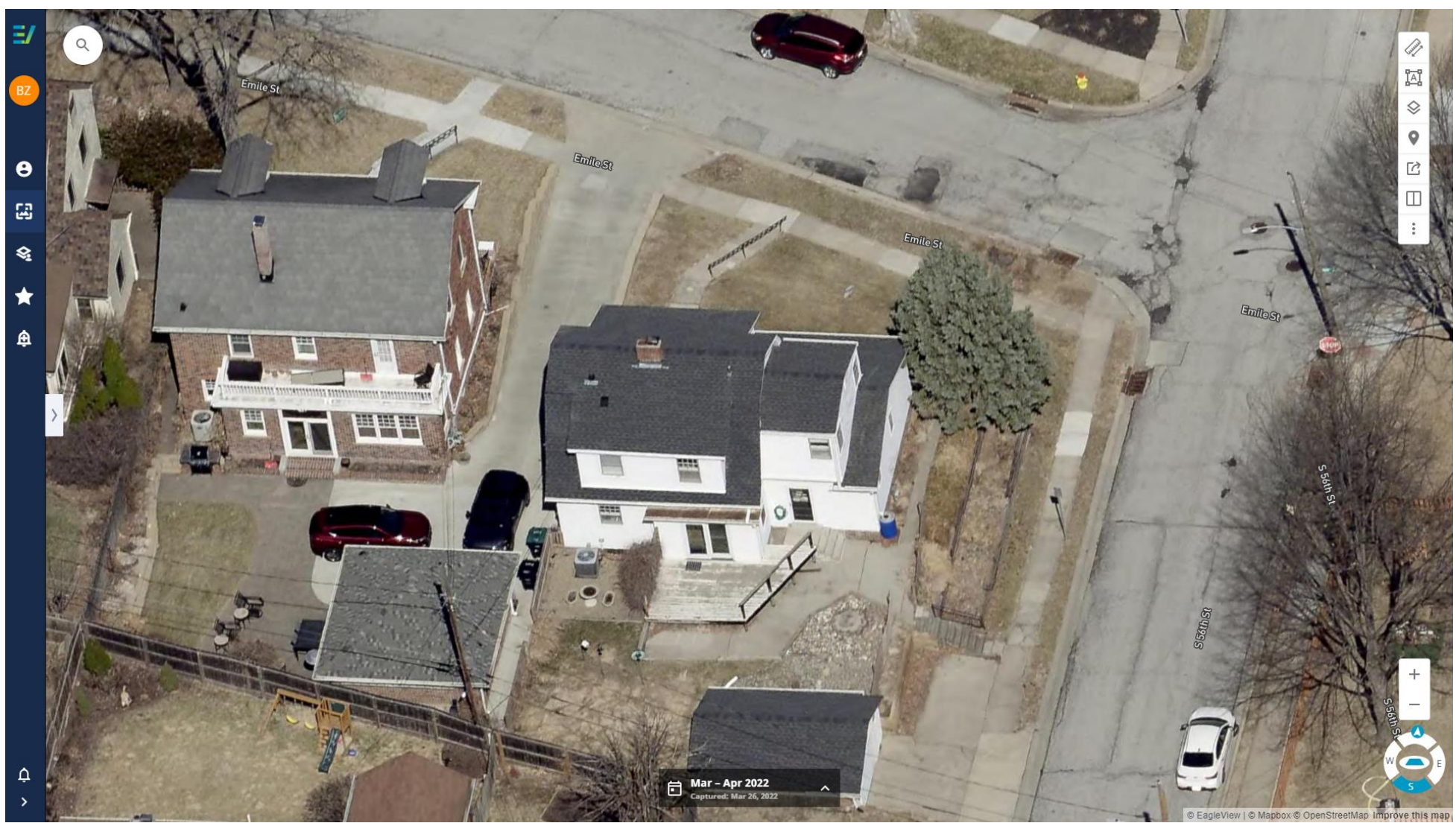


Sketch Inspect
minor mismatch



Sketch Inspect

One comprehensive platform to view and manage sketches, find and review inaccuracies, identify structures that don't have sketches, and update the data



1-Inch Oblique Imagery

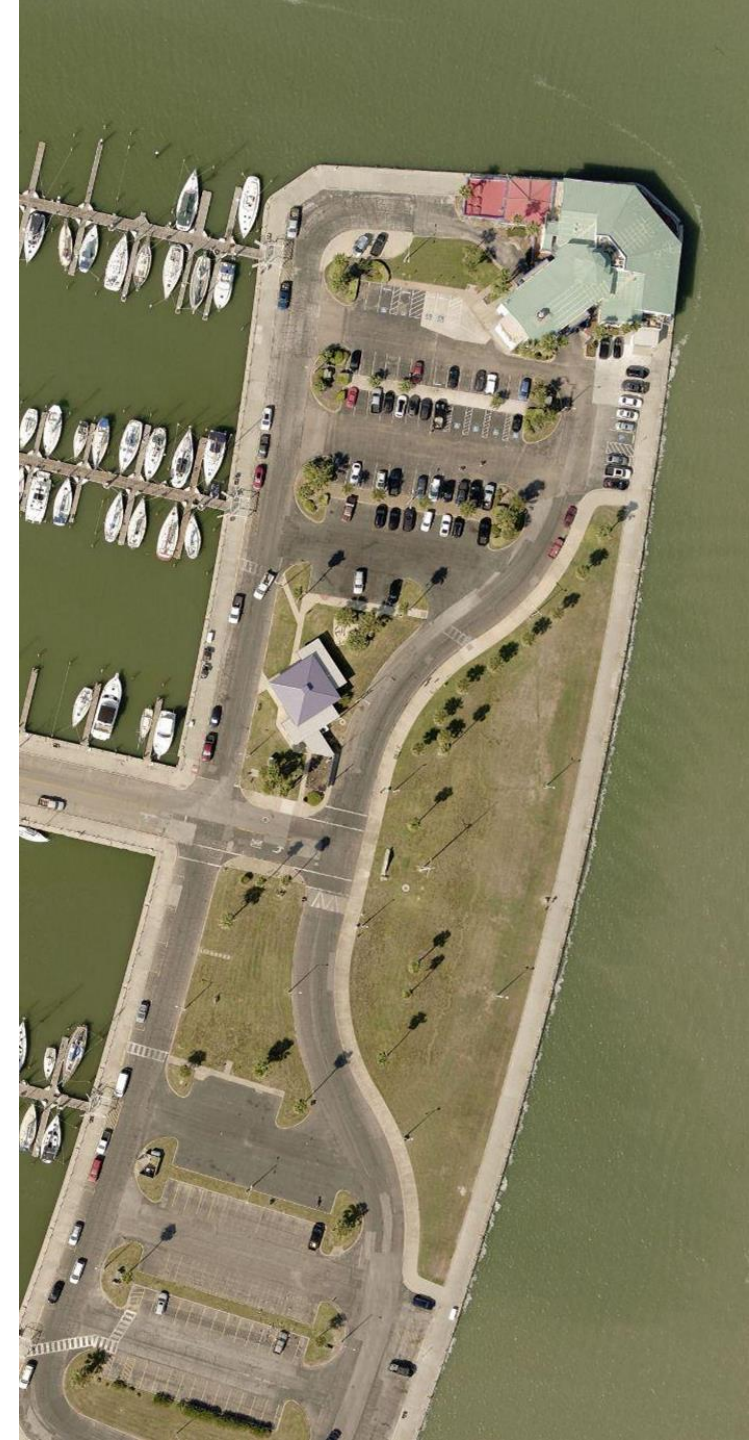
The industry's highest standard in imagery. Each pixel represents 1-square inch. Clear and detailed insights all from your desktop.

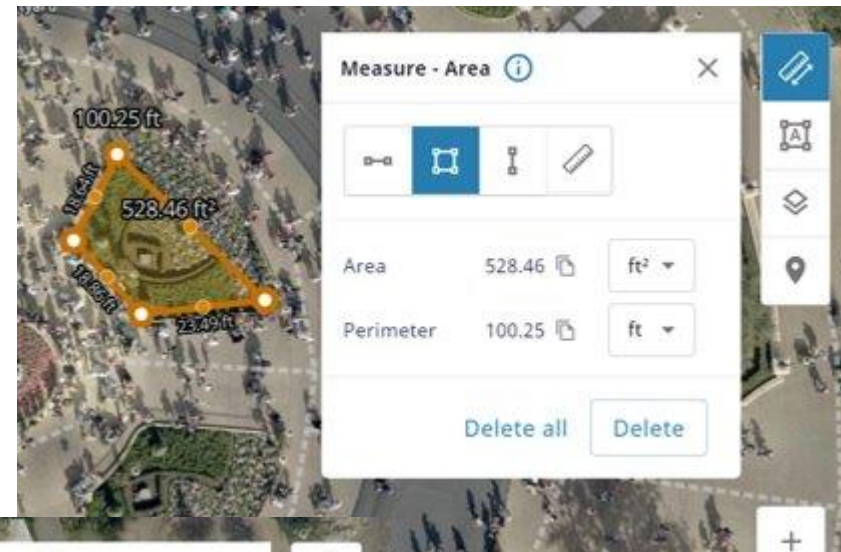
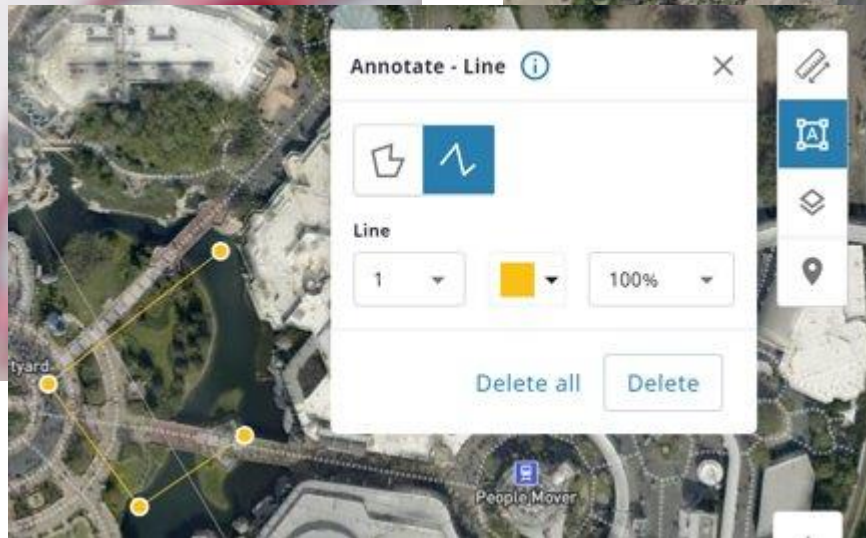
3-Inch Frequent Ortho

EagleView Cloud customers can add value-oriented, 3-inch GSD orthomosaics to flight plans

Benefits:

- ❖ Refresh imagery multiple times per year
- ❖ Complement certified and oblique captures
- ❖ Enable more frequent change analytics





EV Cloud Explorer (Beta)

Brand new platform that has updated features

- Faster navigation with no blank space around images
- Live measurement tools
- More UI customization and better layer support
- Alternative image gallery with thumbnails
- Easier to integrate
- Uses Single-Sign On (SSO) Credentials



© 2023 Eagleview

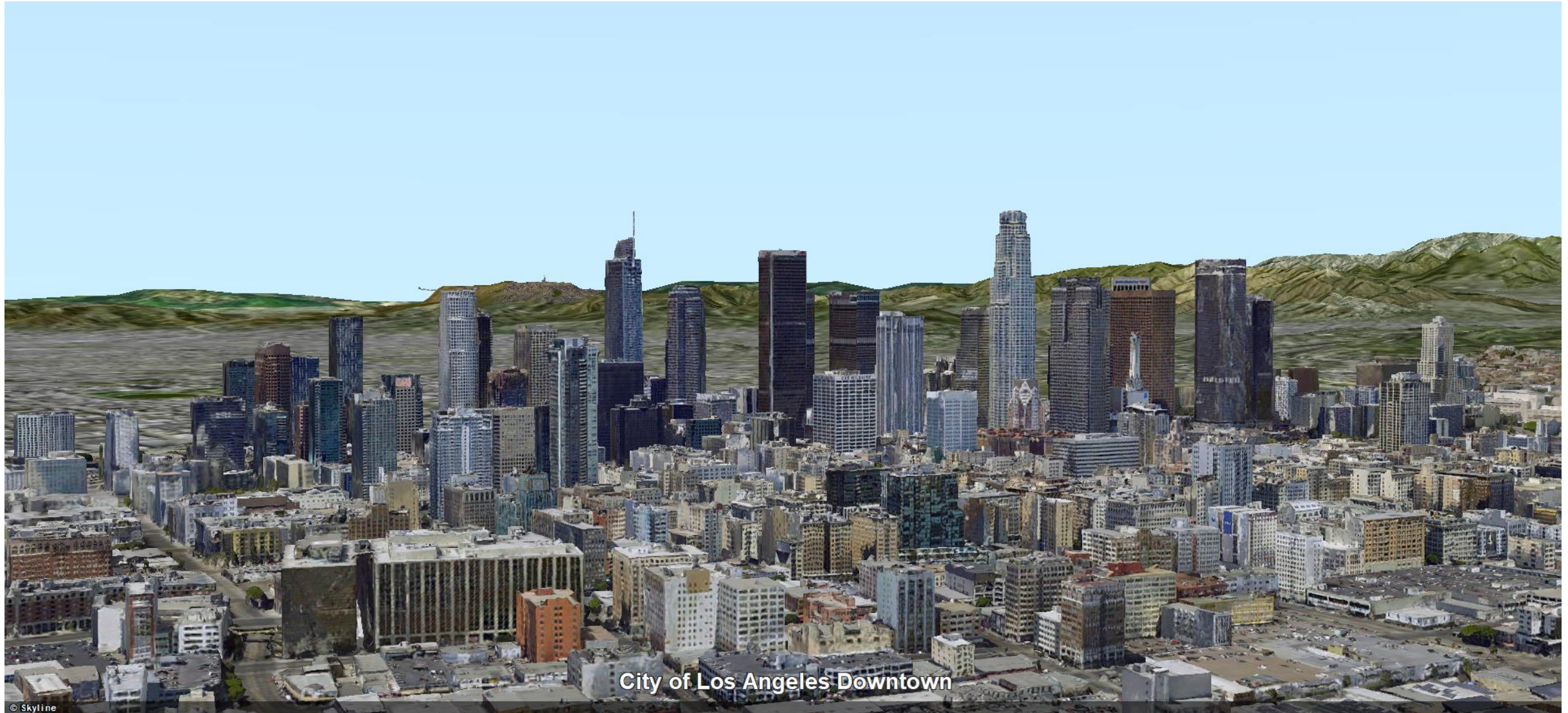
map: Auto (Mosaic) ▾ Jan 2023 - Jan 2023 ▾ 01/11/2023 (AccuPlus)



Near-Infrared (NIR)

Camera technology that has a 4-band sensor to capture infrared light frequencies that is outside of the red, green, or blue spectrums that the visible eye can see.

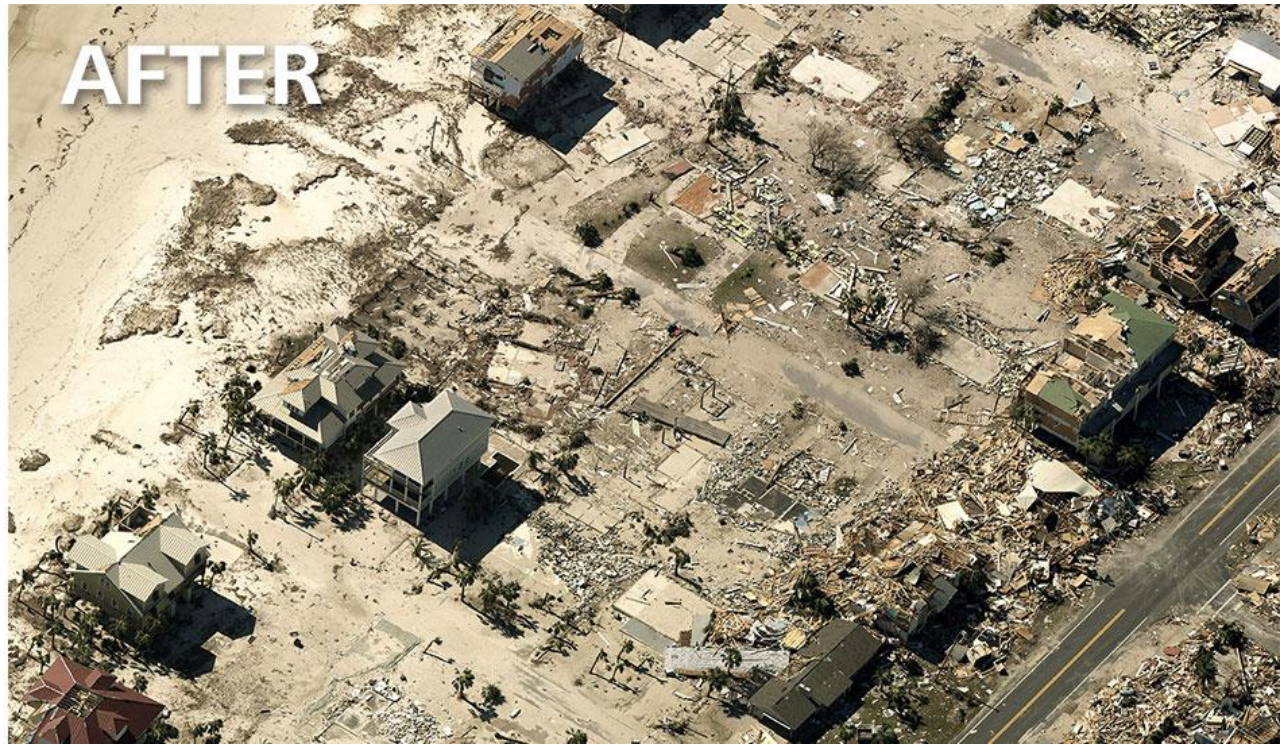
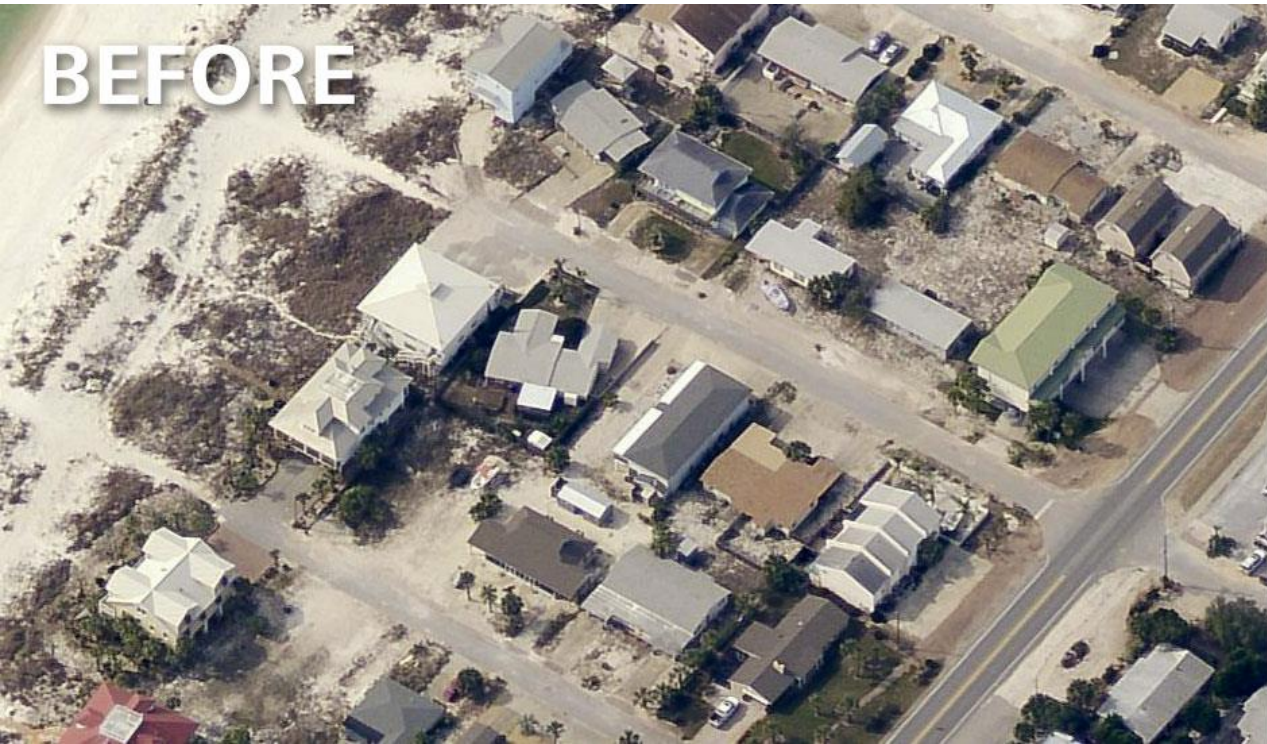
The resulting dataset can be used to classify vegetation, for wetland delineation, and calculate impervious surface area and water runoff



City of Los Angeles Downtown

3D Mesh

A cost-effective and highly efficient solution that uses your EagleView imagery to visualize key structures, accurately measure distance, area, and volume, analyze sightlines, shadow-analysis, contour and slopes, flood visualization, and even underground utilities within a 3D environment.



**Disaster Response
Program**

Imagery of up to 200 square miles after qualifying events

Coming Soon



Structure Data

What Is Included:

- ❖ Building, deck, pool, and roof penetration data offered in three modes
- ❖ Image processing, machine learning, quality control, analytics, and display

Benefits:

- ❖ Recent and updated layers for analysis
- ❖ Eliminates separate imagery and data purchase
- ❖ Efficiency and accuracy





Next Generation Asset Management

Combines industry-leading oblique aerial imagery with the power of AI to solve asset management challenges.

Submit your challenge at:

company.eagleview.com/asset-management

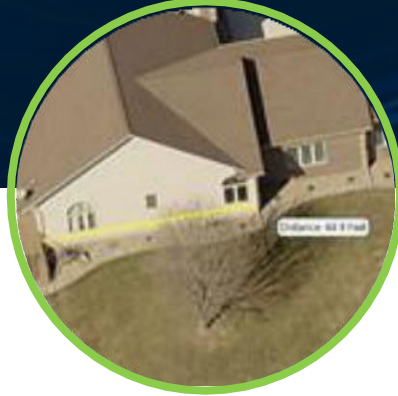
Multiple Departments Can Benefit



GIS



Public Safety



**Property
Assessment**



Public Works

Thank You

